

# APPENDIX C:

## Aerial Photography (October 2022)

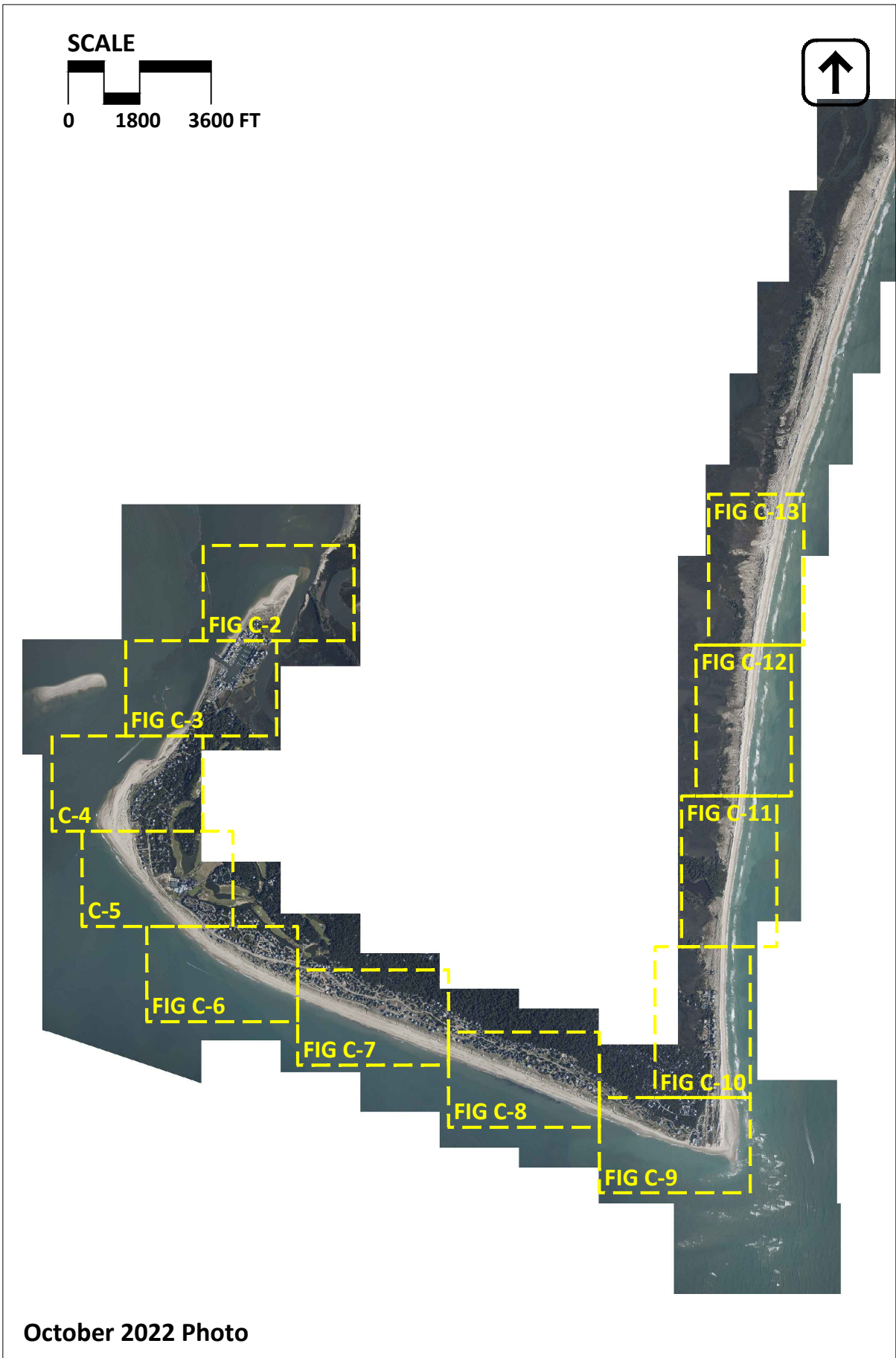
---

This appendix contains aerial photography of the Baldhead Island shoreline taken on October 5, 2022 by Greenman-Pedersen, Inc. (GPI)<sup>1</sup> An index sheet is provided as **Figure C-1** and the aerial photography is presented as **Figures C-2** through **C-13**. Also depicted in the figures are the monitoring baseline and profile azimuths summarized in **Table 2.1**.

---

<sup>1</sup> Greenman-Pederson, Inc.; 3909 Wrightsville Ave. Suite 200; Wilmington, NC 28403.

*-- This page intentionally left blank --*



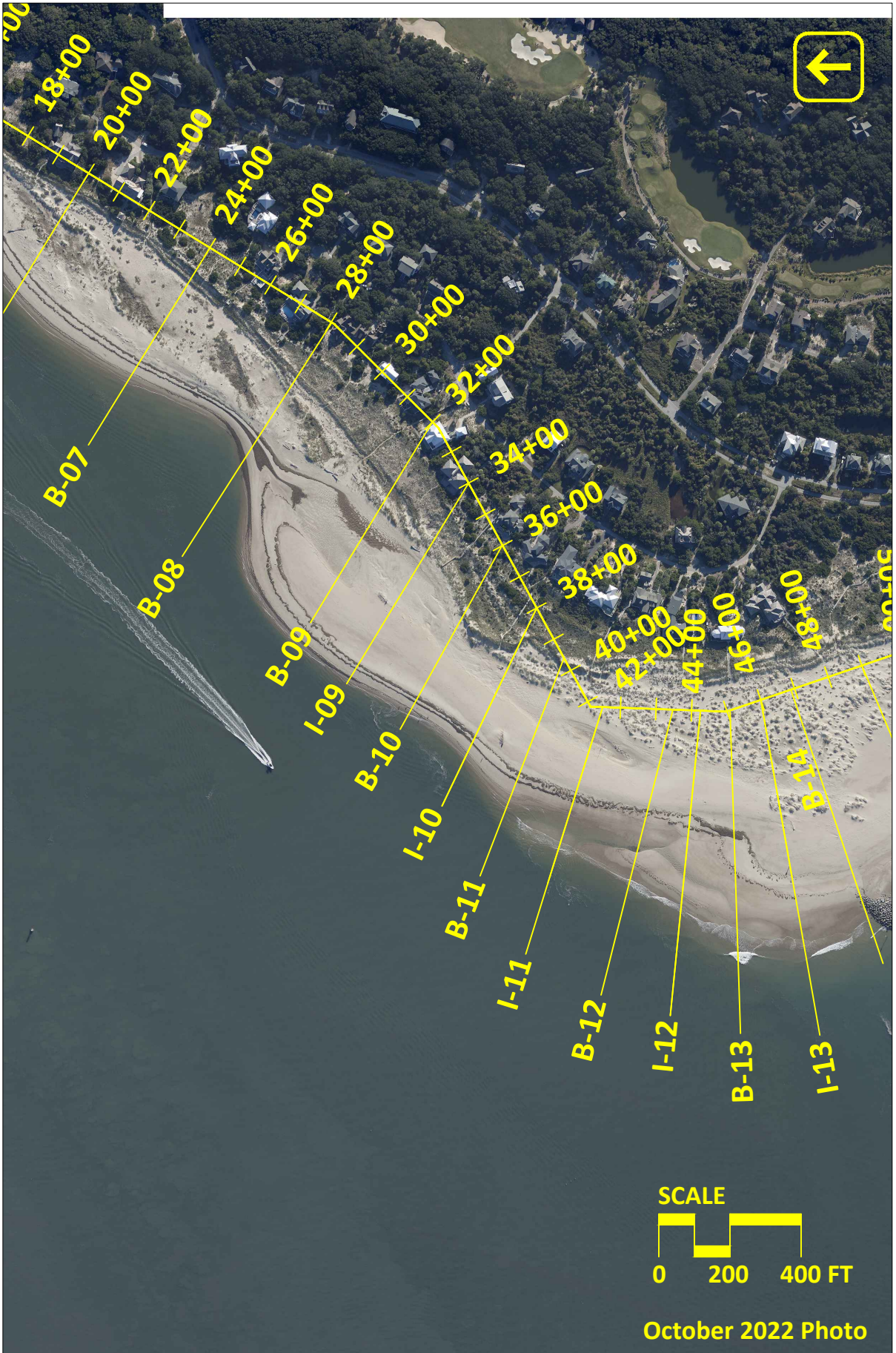
**Figure C-1:** Bald Head Island October 2022 aerial photography index sheet.



**Figure C-2:** Bald Head Island October 2022 aerial photography.



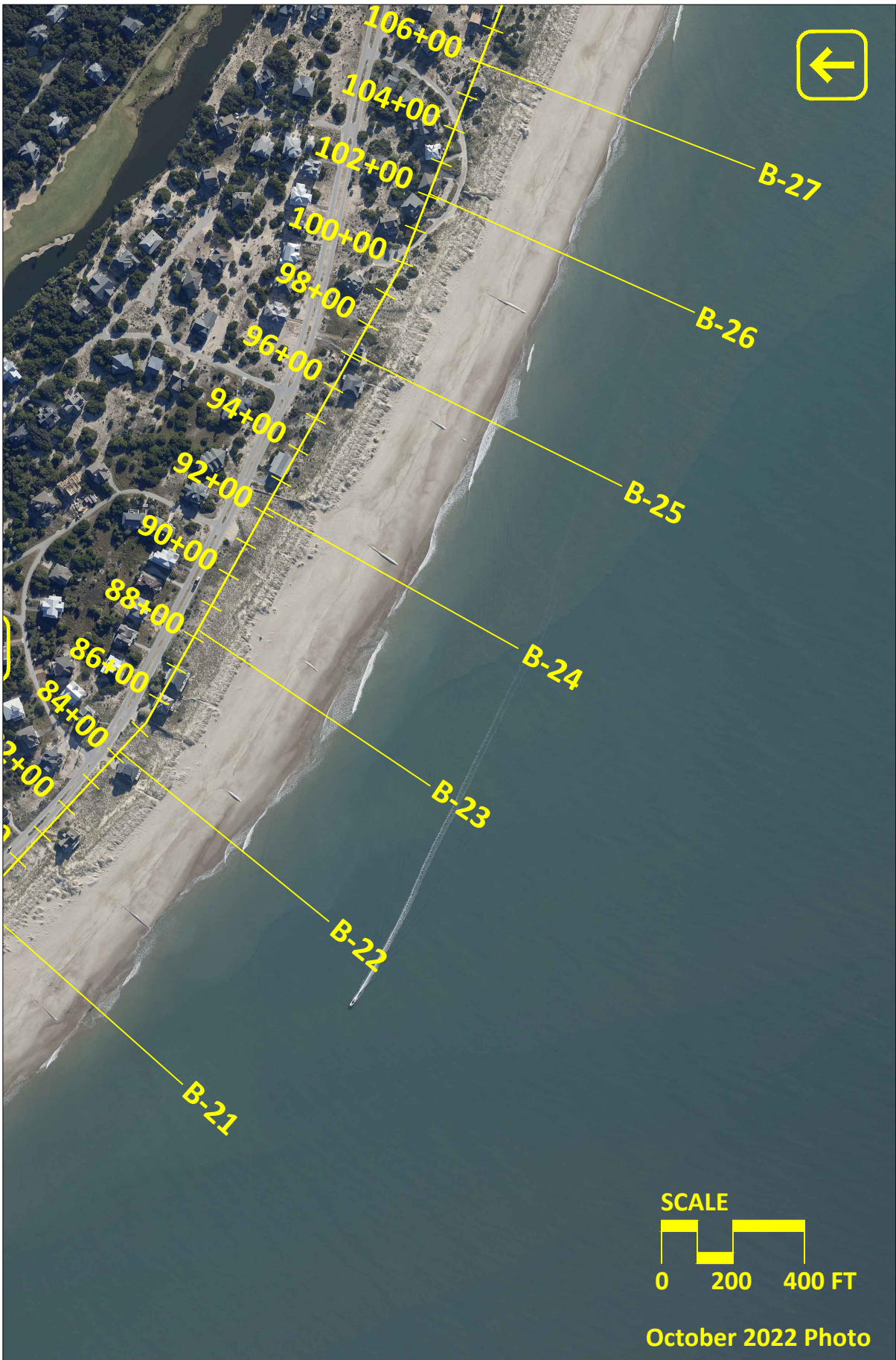
**Figure C-3:** Bald Head Island October 2022 aerial photography.



**Figure C-4:** Bald Head Island October 2022 aerial photography.



**Figure C-5:** Bald Head Island October 2022 aerial photography.



**Figure C-6:** Bald Head Island October 2022 aerial photography.



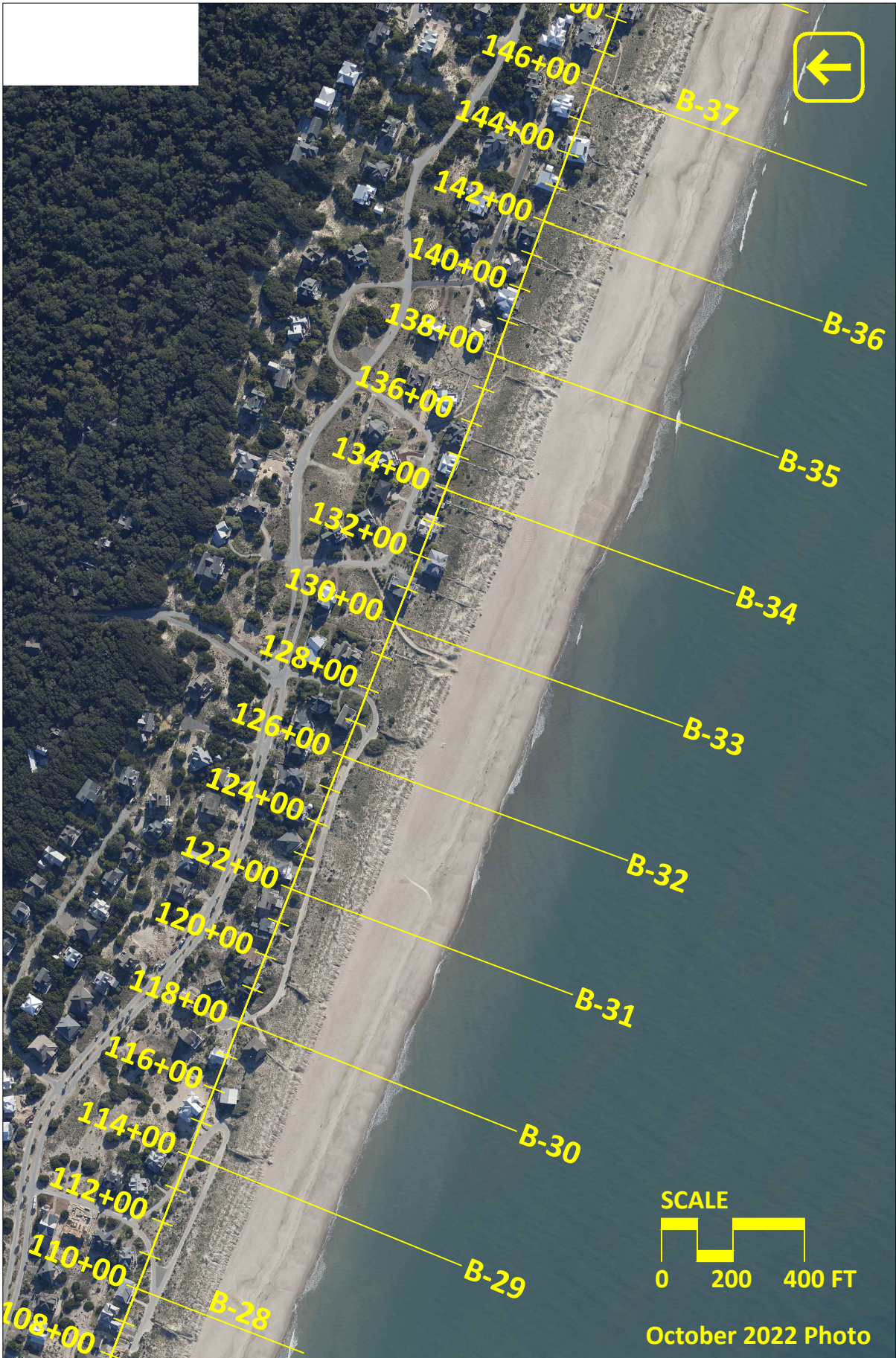


Figure C-7: Bald Head Island October 2022 aerial photography.

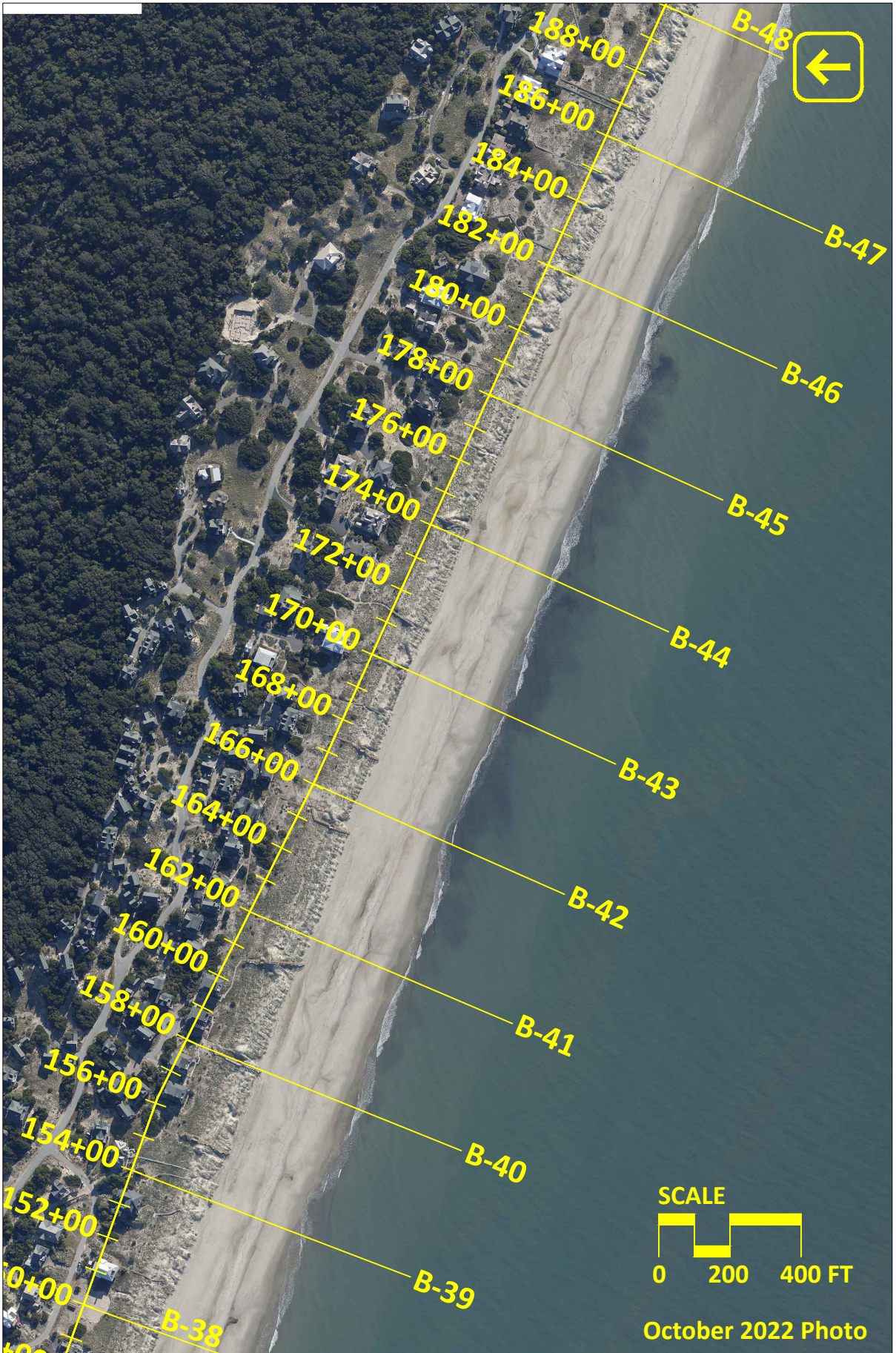
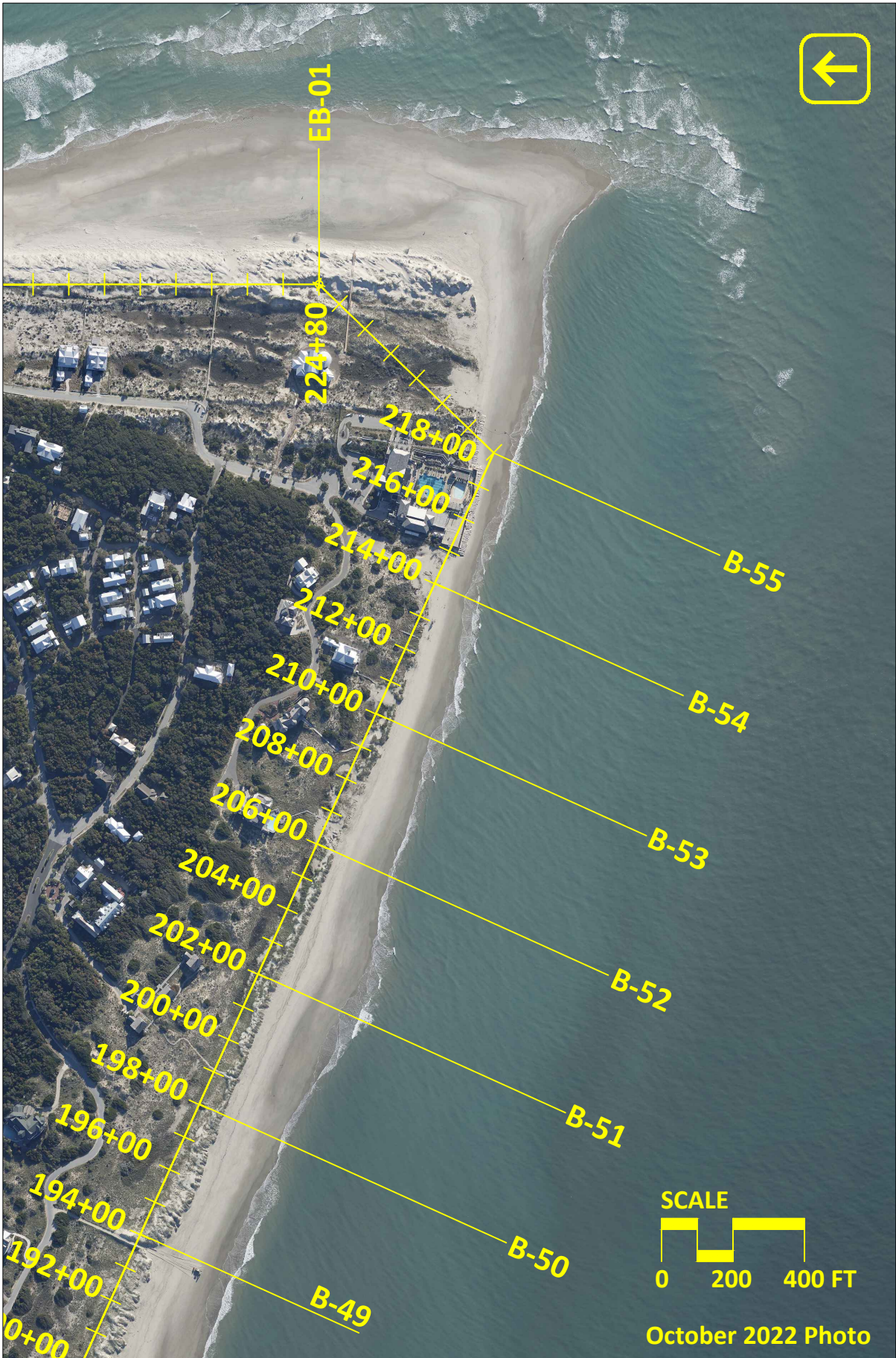
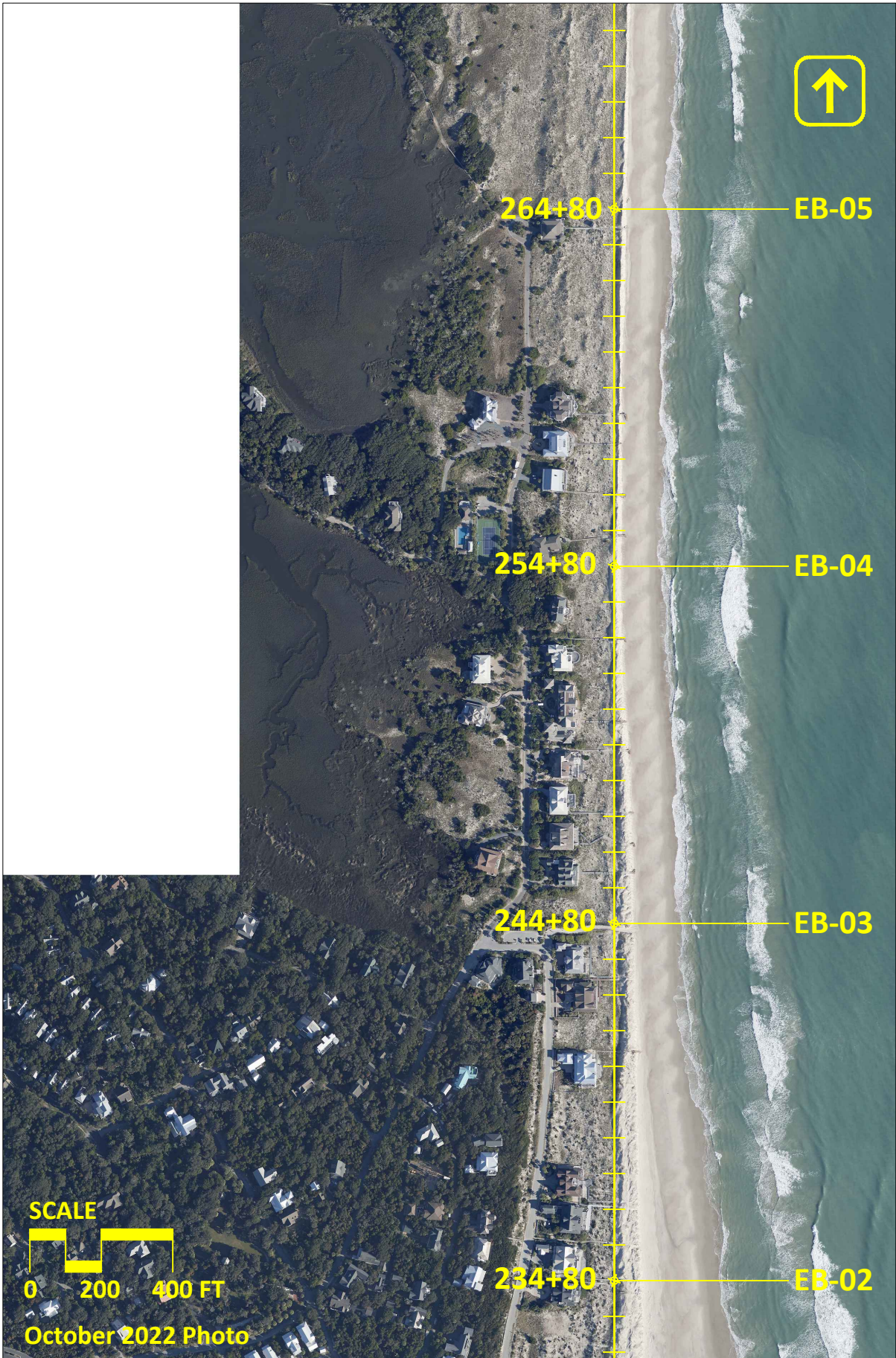


Figure C-8: Bald Head Island October 2022 aerial photography.



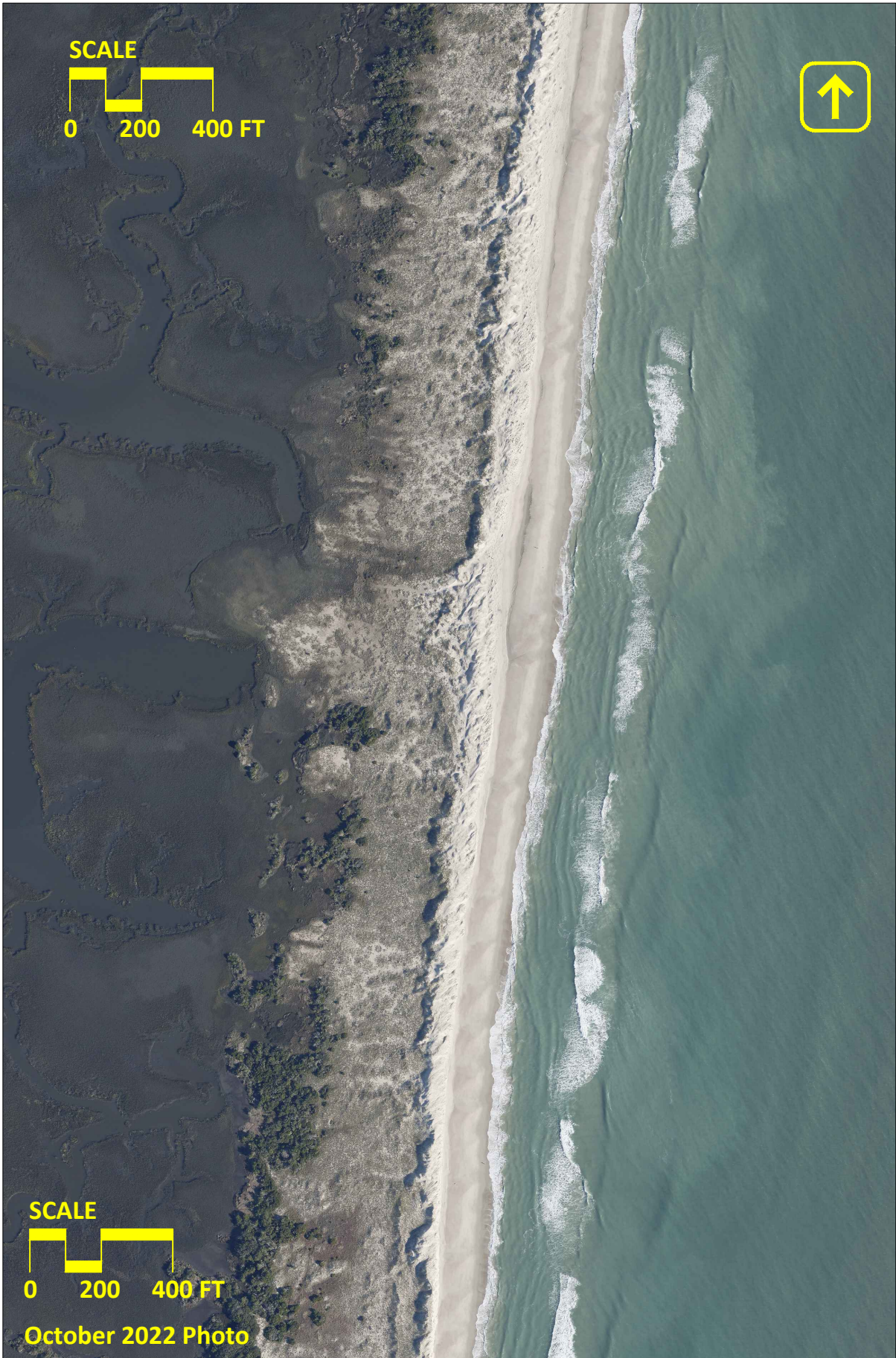
**Figure C-9:** Bald Head Island October 2022 aerial photography.



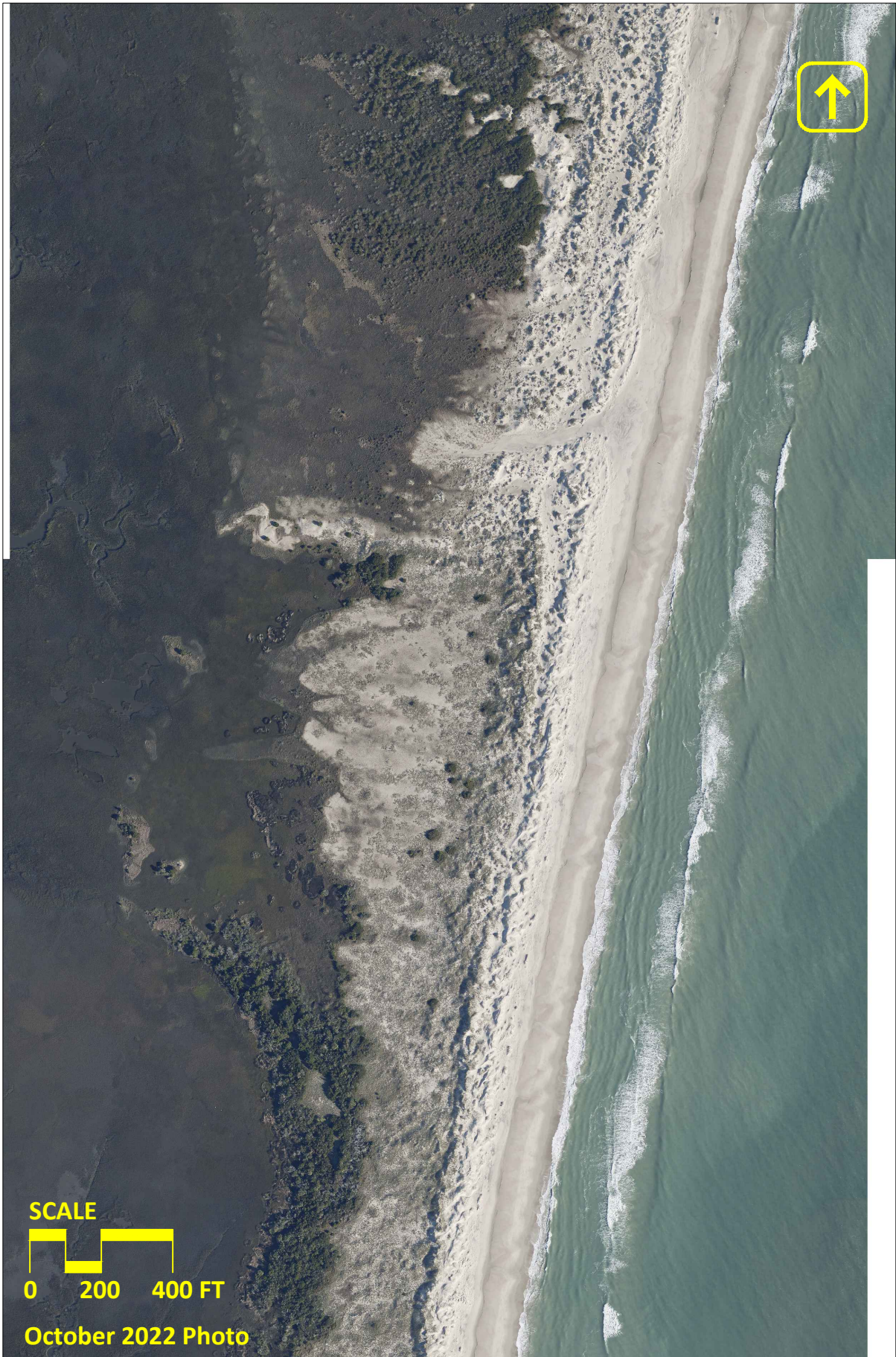
**Figure C-10:** Bald Head Island October 2022 aerial photography.



**Figure C-11:** Bald Head Island October 2022 aerial photography.



**Figure C-12:** Bald Head Island October 2022 aerial photography.



**Figure C-13:** Bald Head Island October 2022 aerial photography.

*-- This page intentionally left blank --*