

# APPENDIX D:

## Aerial Photography (May 2022)

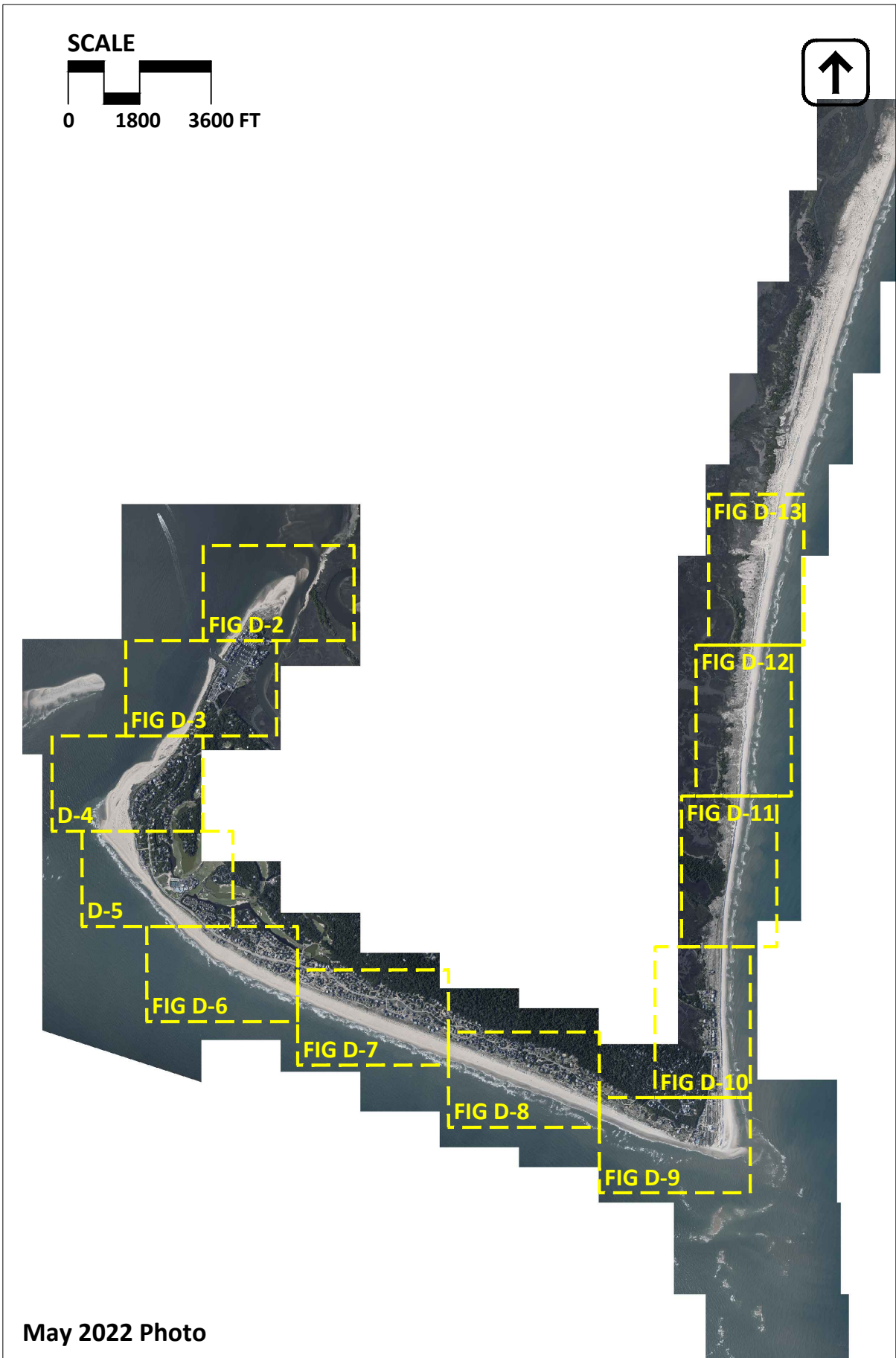
---

This appendix contains aerial photography of the Baldhead Island shoreline taken on May 20, 2022 by Greenman-Pedersen, Inc. (GPI)<sup>1</sup> An index sheet is provided as **Figure D-1** and the aerial photography is presented as **Figures D-2** through **D-13**. Also depicted in the figures are the monitoring baseline and profile azimuths summarized in **Table 2.1**.

---

<sup>1</sup> Greenman-Pederson, Inc.; 3909 Wrightsville Ave. Suite 200; Wilmington, NC 28403.

*-- This page intentionally left blank --*



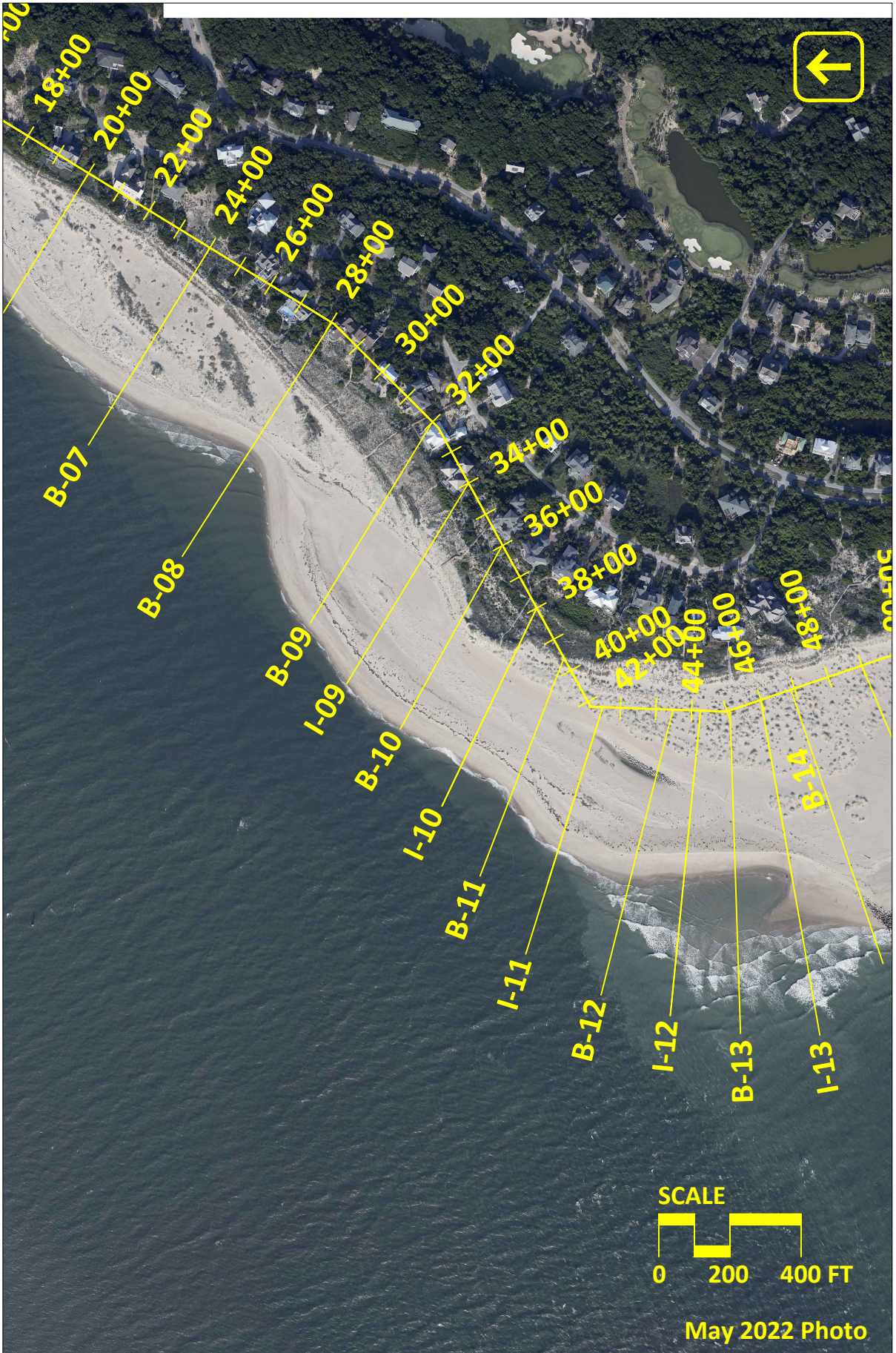
**Figure D-1:** Bald Head Island May 2022 aerial photography index sheet.



Figure D-2: Bald Head Island May 2022 aerial photography.



Figure D-3: Bald Head Island May 2022 aerial photography.



**Figure D-4:** Bald Head Island May 2022 aerial photography.



Figure D-5: Bald Head Island May 2022 aerial photography.

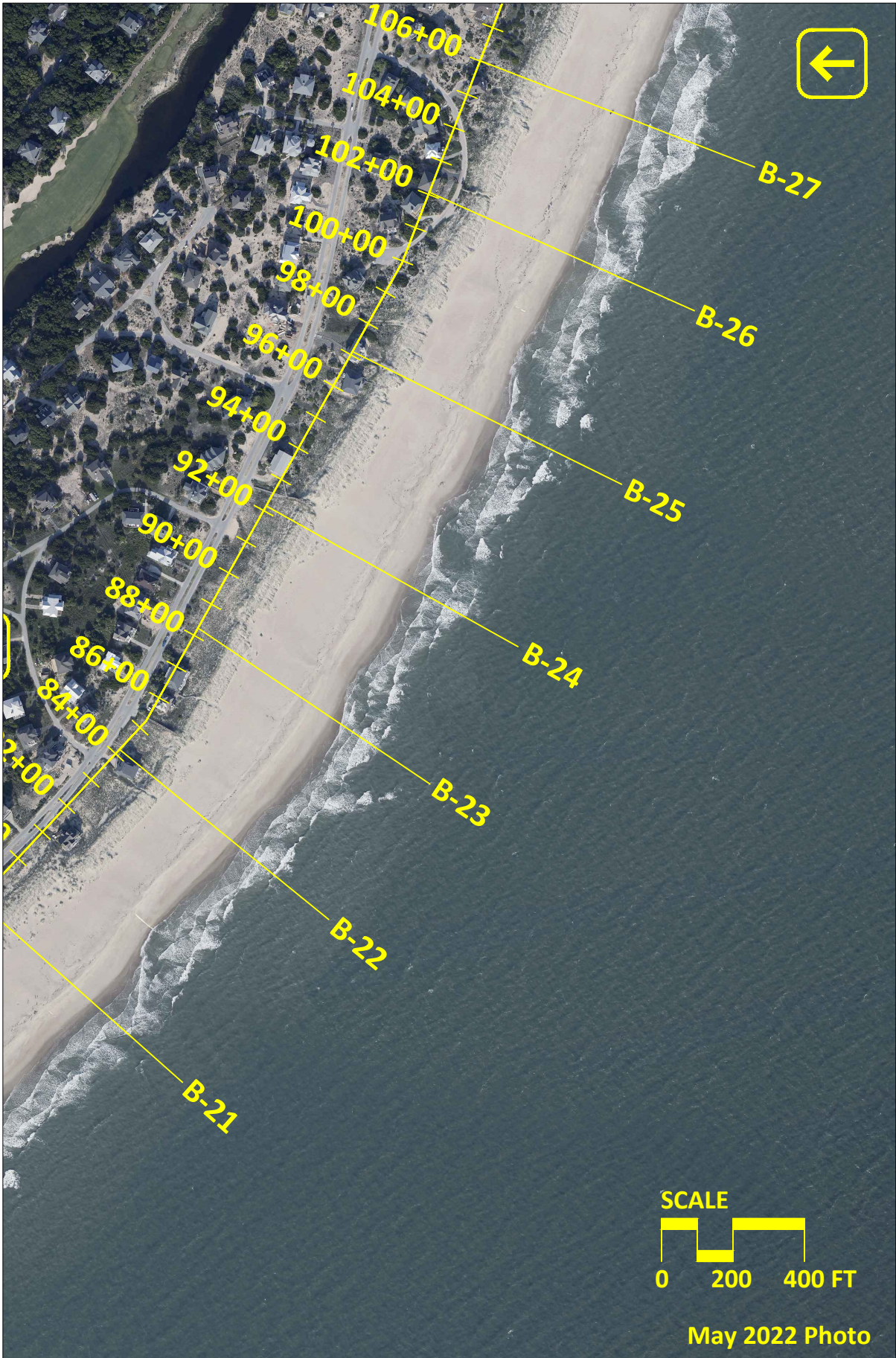


Figure D-6: Bald Head Island May 2022 aerial photography.



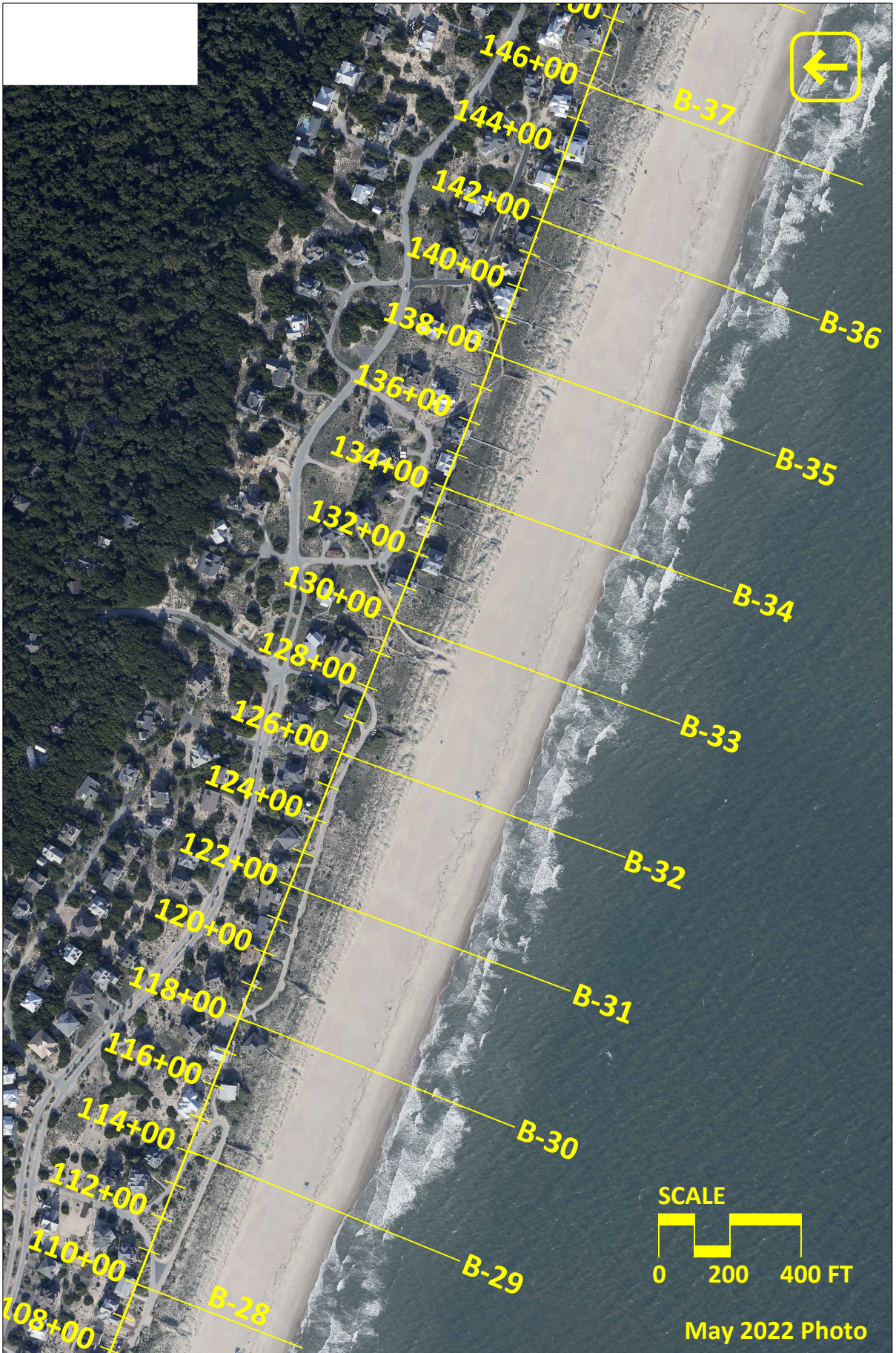


Figure D-7: Bald Head Island May 2022 aerial photography.

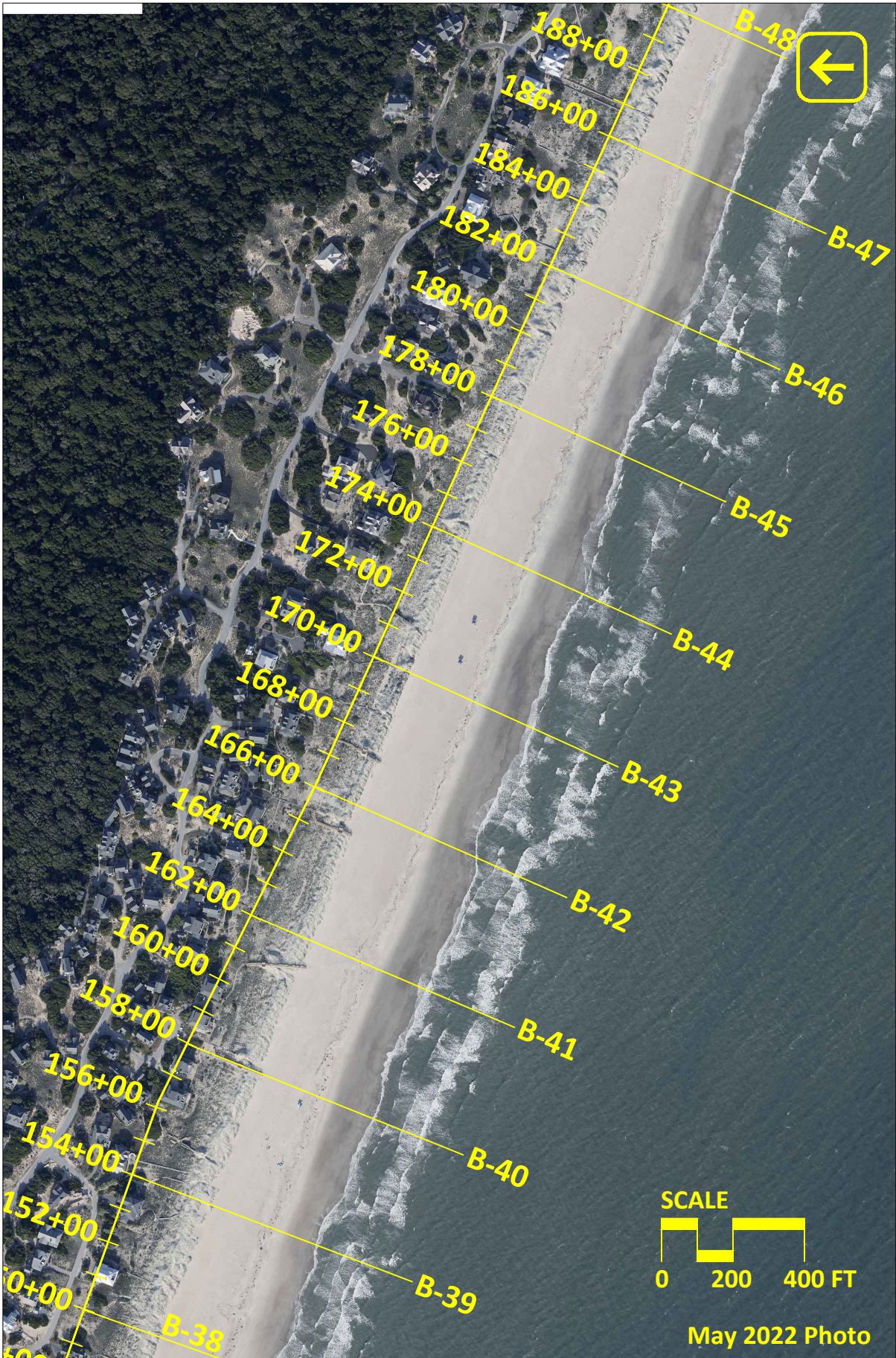


Figure D-8: Bald Head Island May 2022 aerial photography.

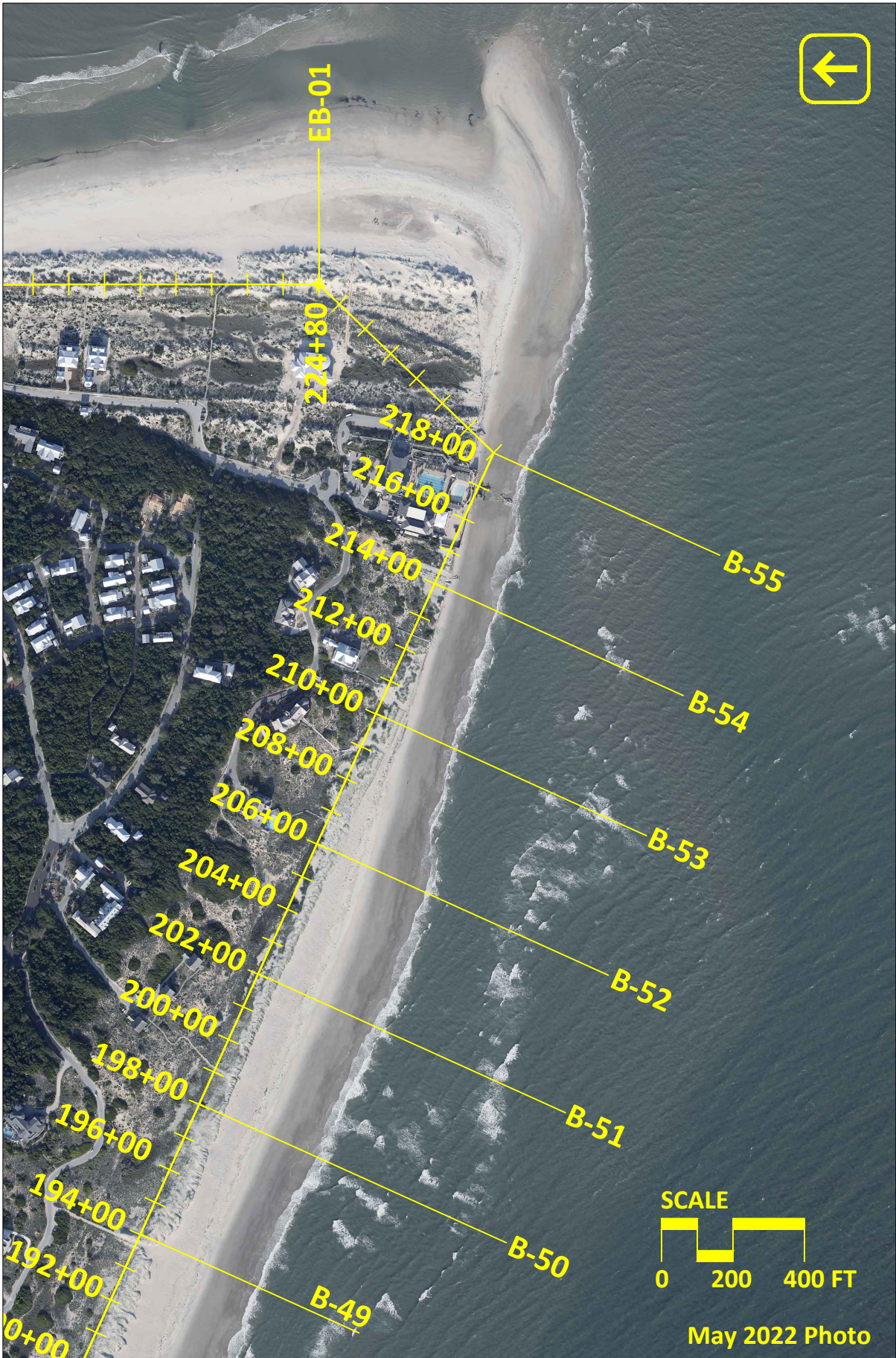


Figure D-9: Bald Head Island May 2022 aerial photography.



Figure D-10: Bald Head Island May 2022 aerial photography.

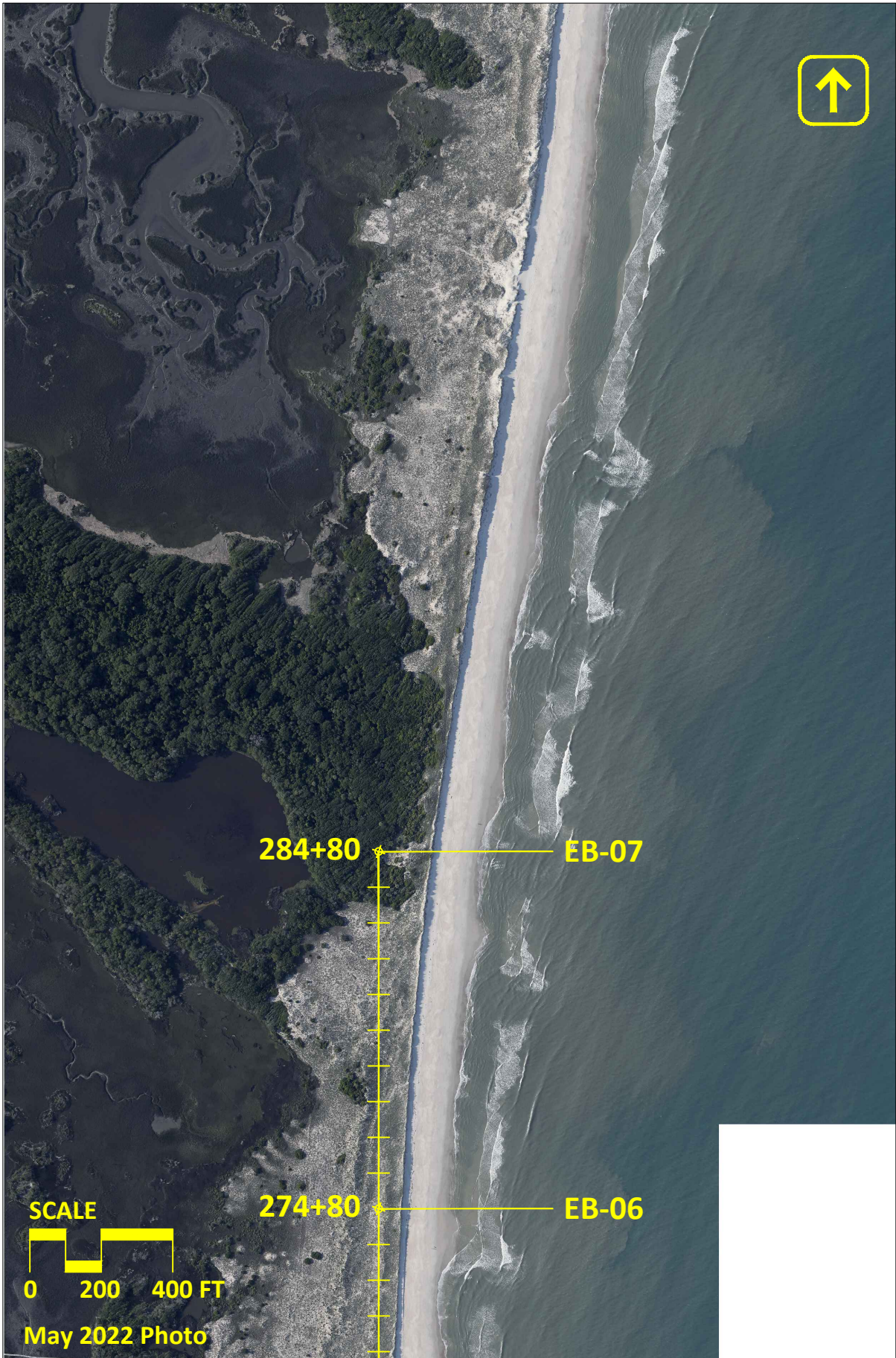
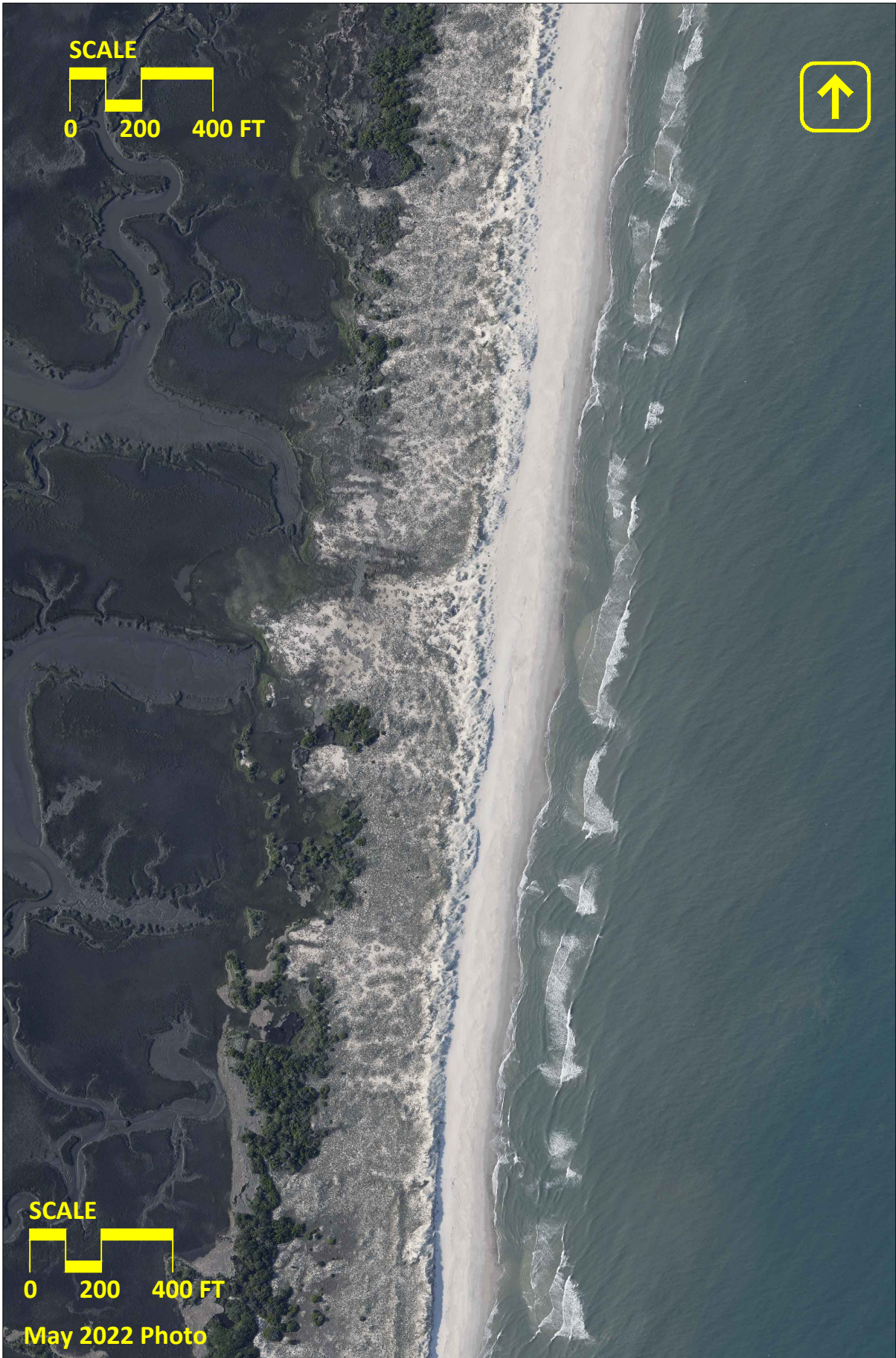
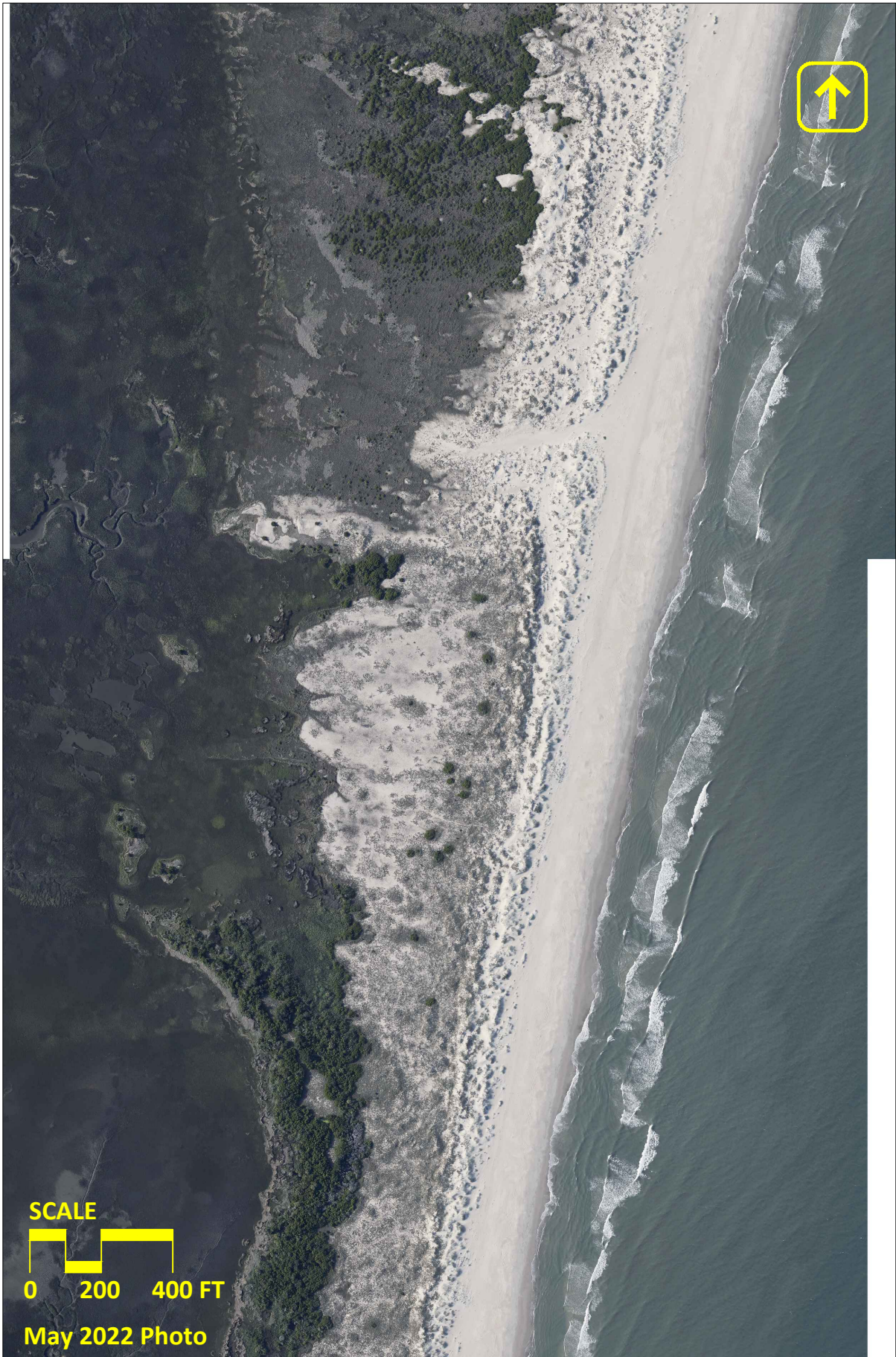


Figure D-11: Bald Head Island May 2022 aerial photography.



**Figure D-12:** Bald Head Island May 2022 aerial photography.



**Figure D-13: Bald Head Island May 2022 aerial photography.**

*-- This page intentionally left blank --*