

# **APPENDIX E:**

## **Photo Chronology of “The Point”**

---

This appendix contains historical aerial photography of the “The Point” along the Bald Head Island shoreline taken between 1969 and 2023. Demarcated on each photo are the approximate September 2001 (blue line) and May 2023 (red line) apparent vegetation lines.

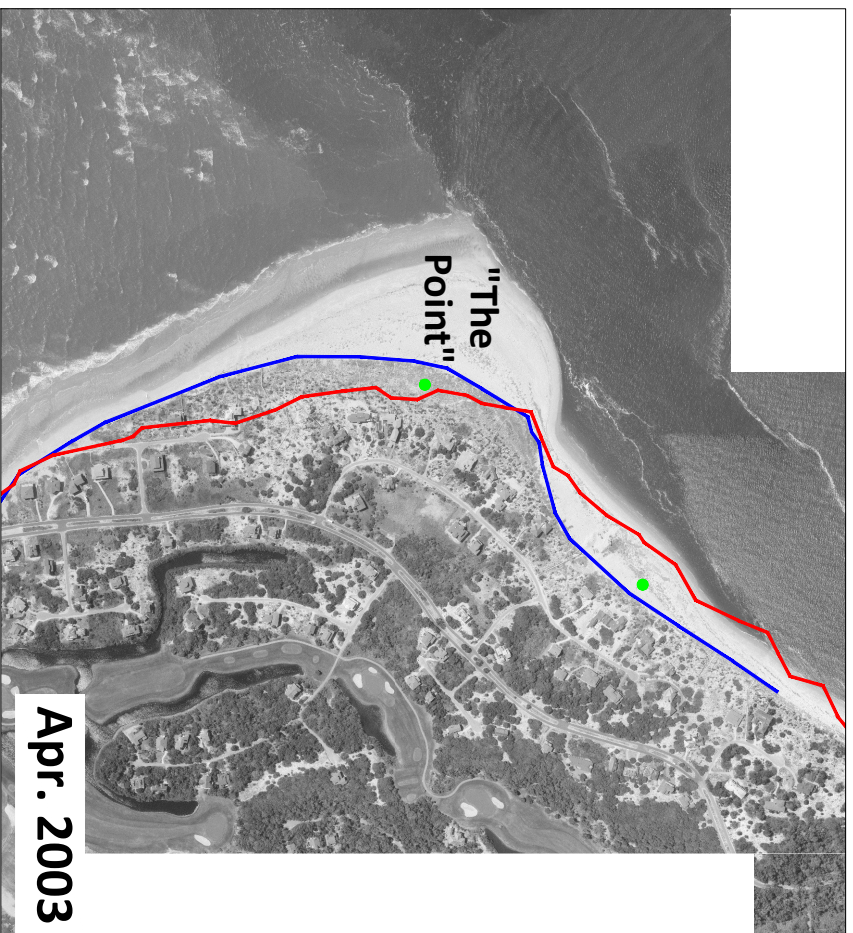
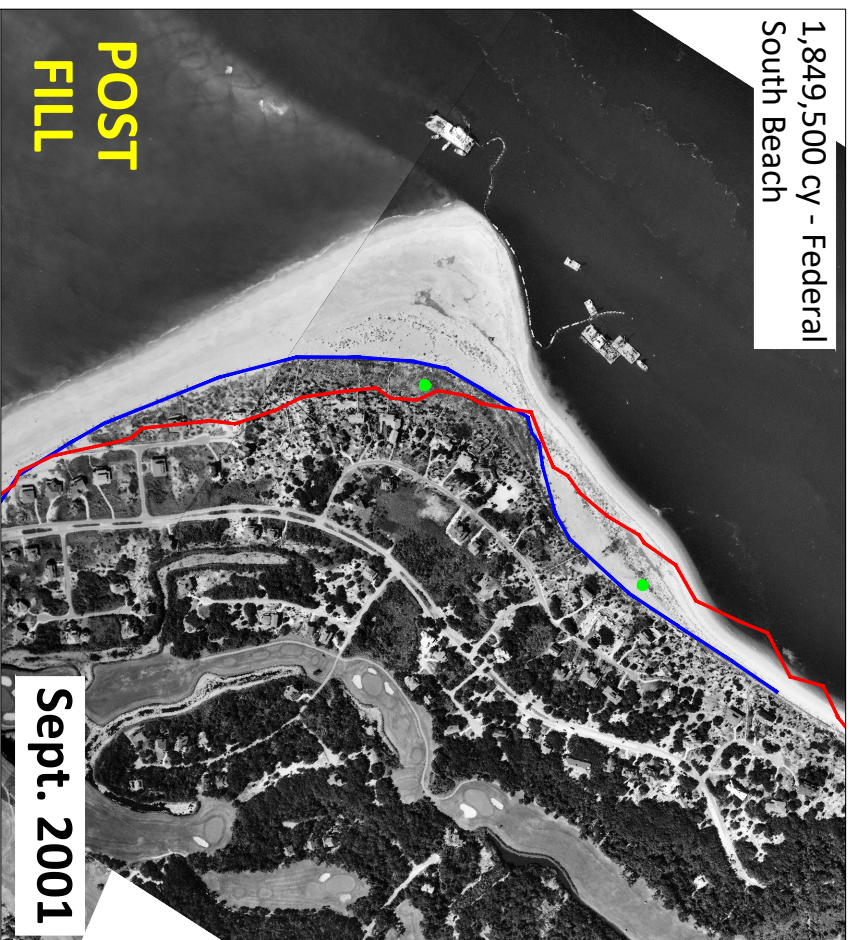
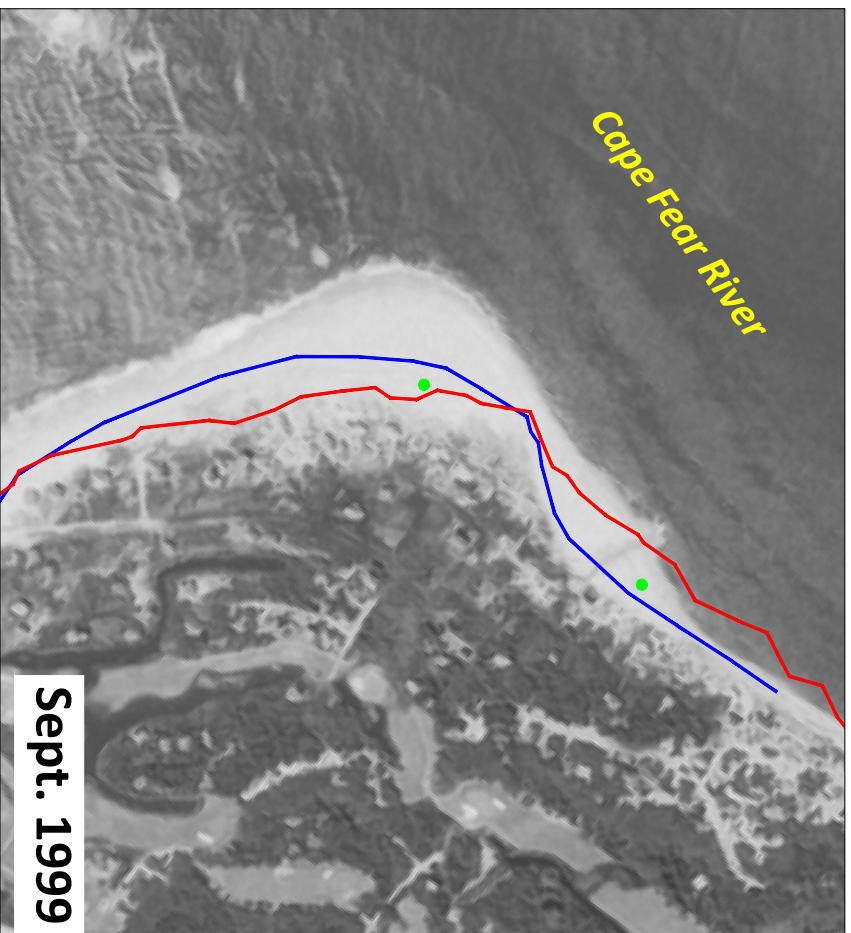
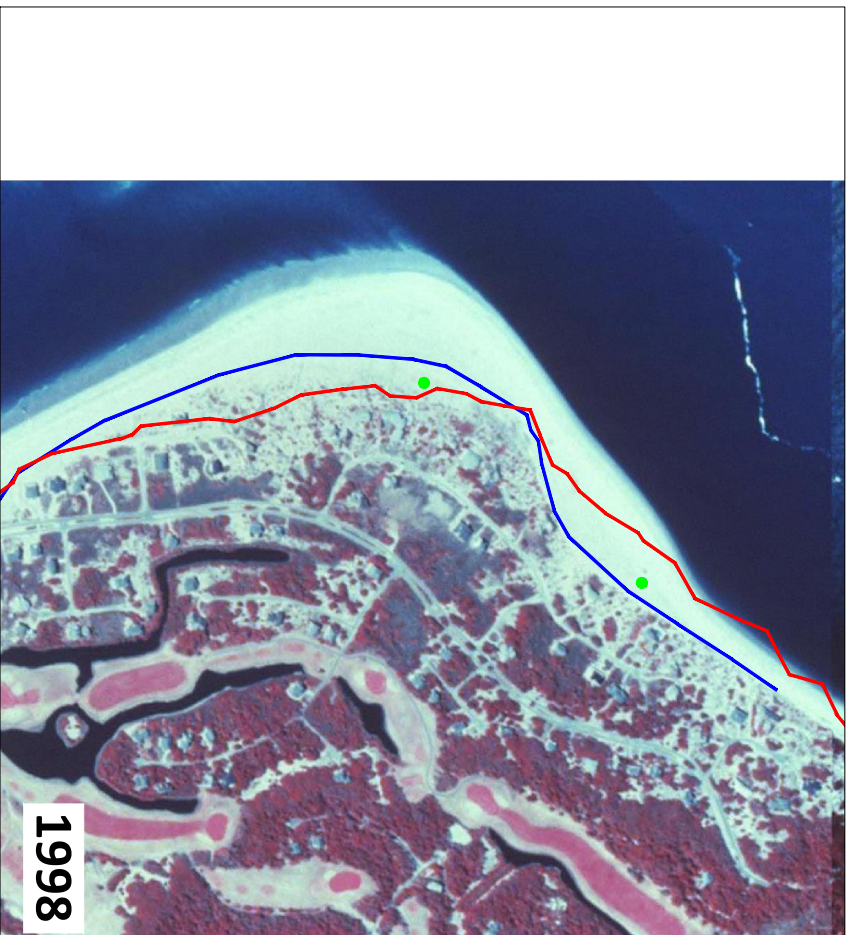
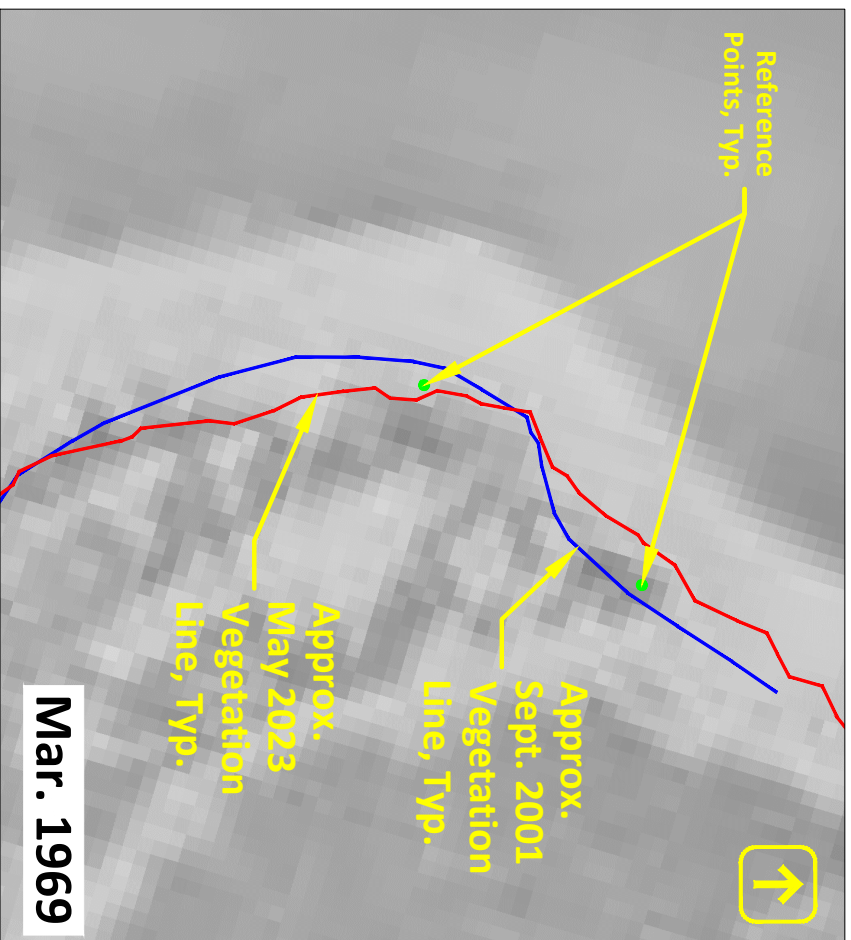


Figure E.1: Aerial photography at "The Point" Bald Head Island, NC

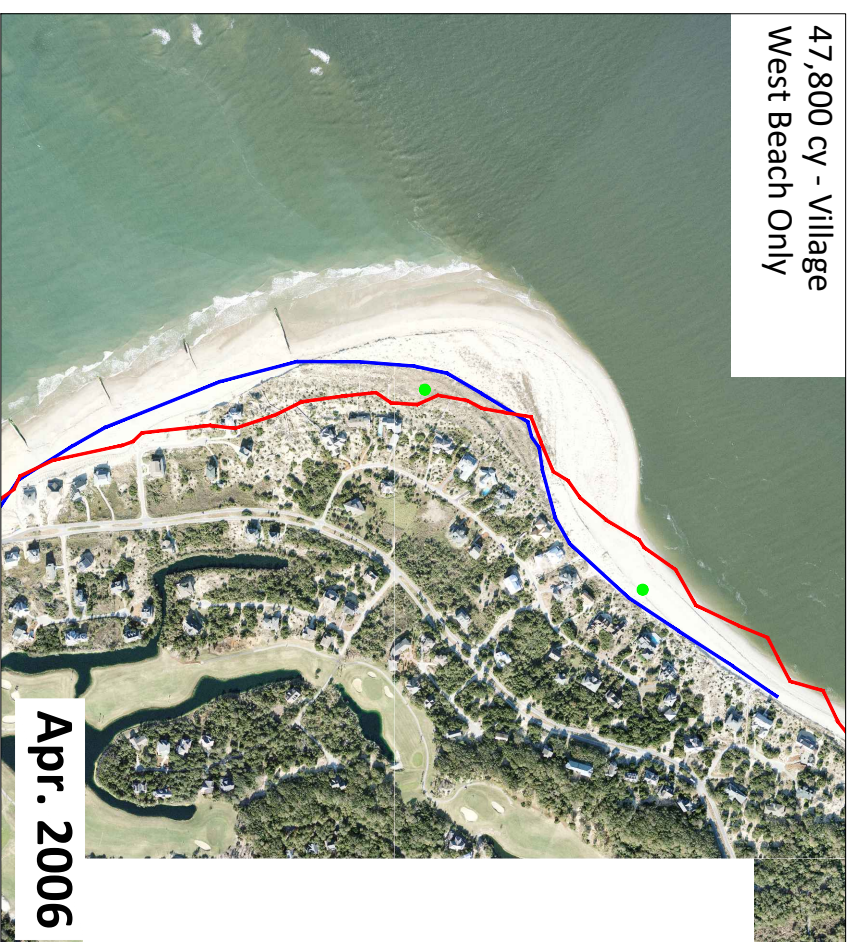
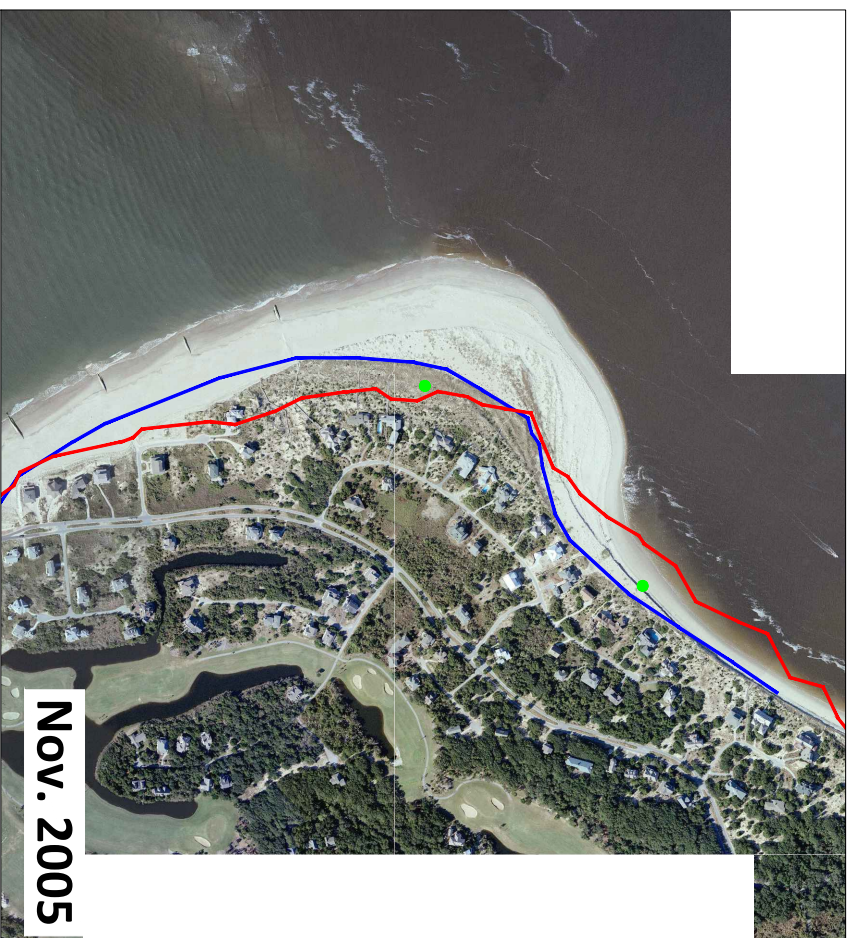
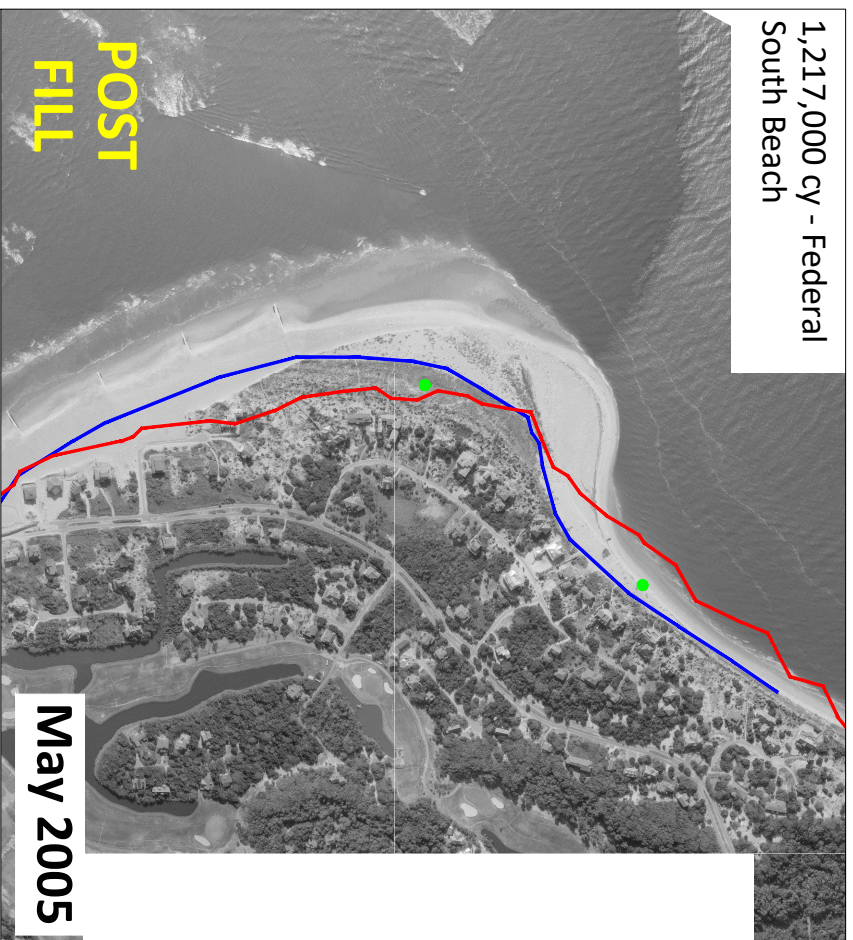
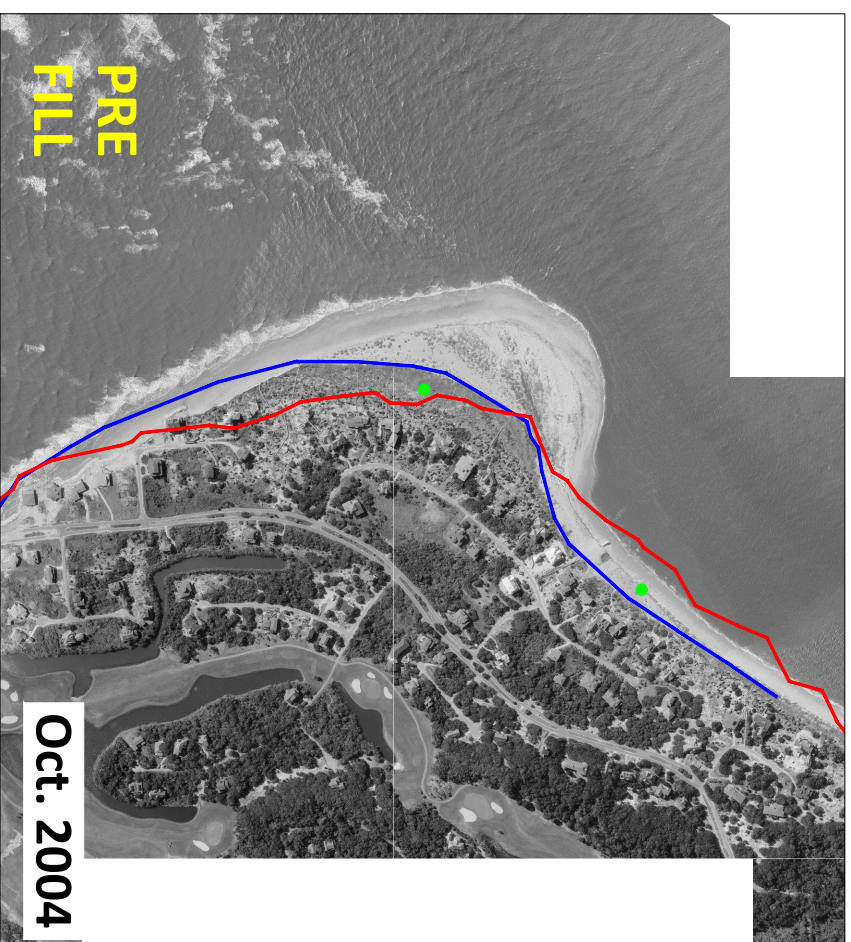
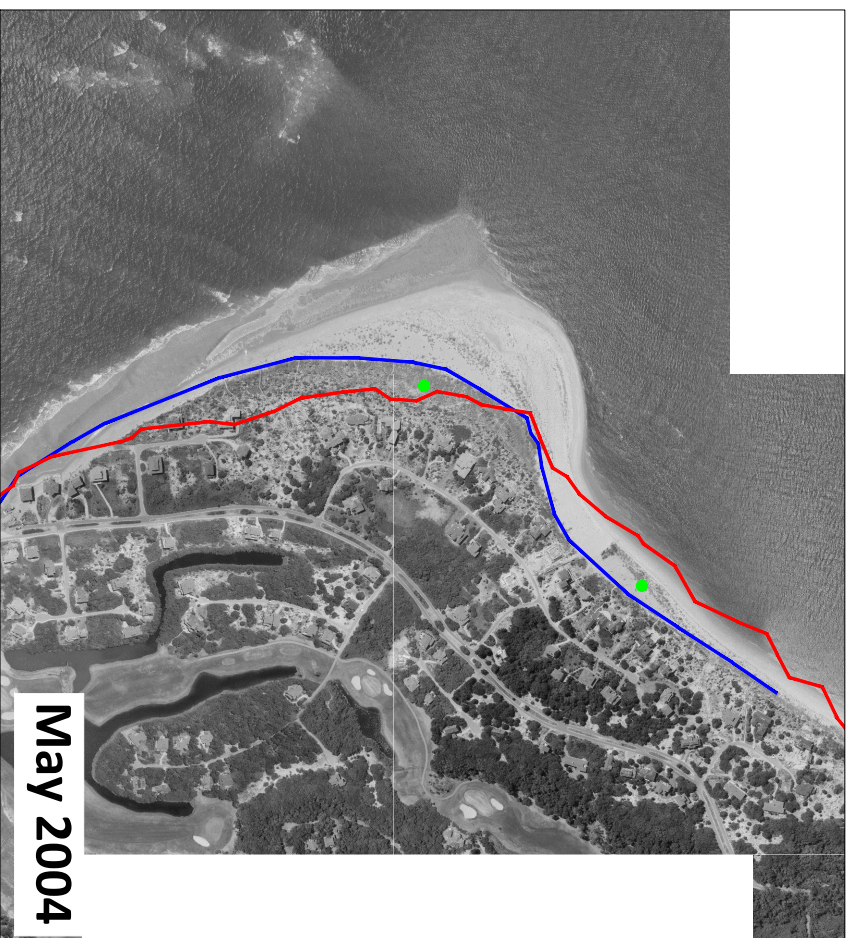
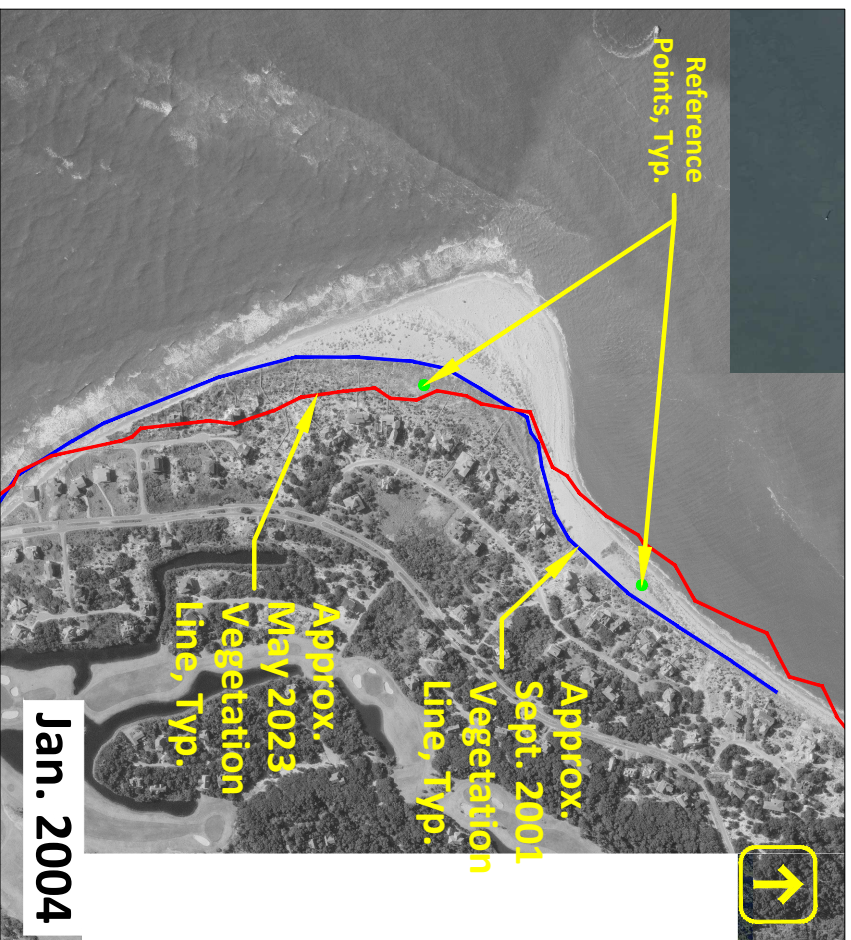


Figure E.2: Aerial photography at "The Point" Bald Head Island, NC

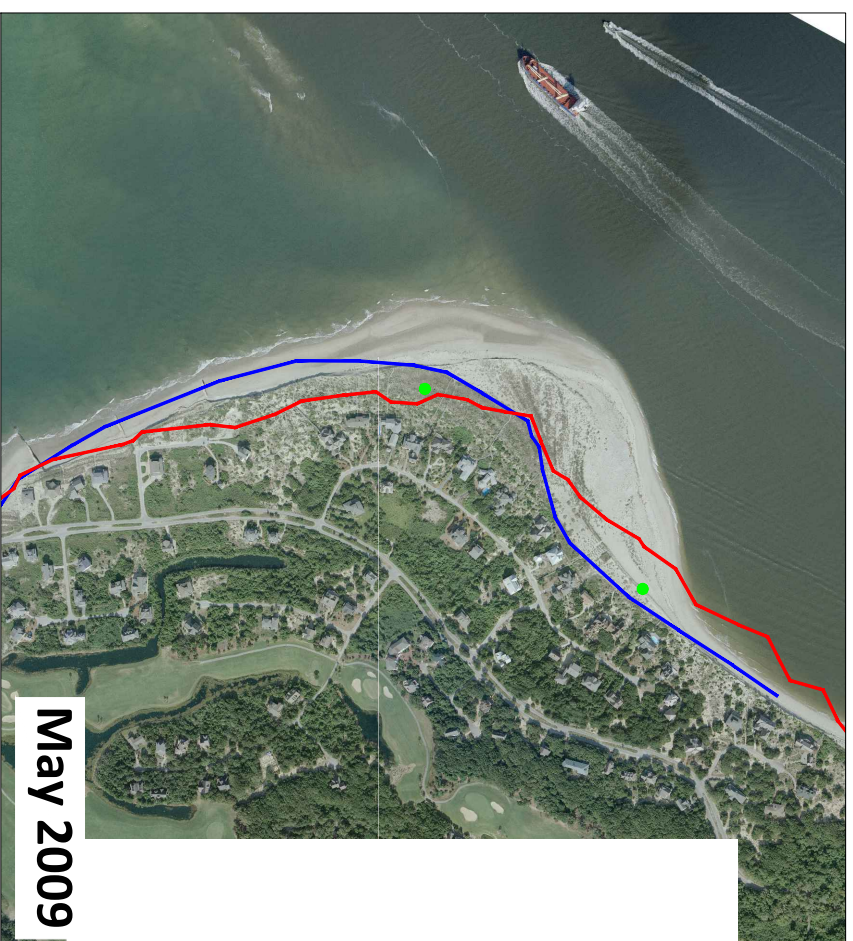
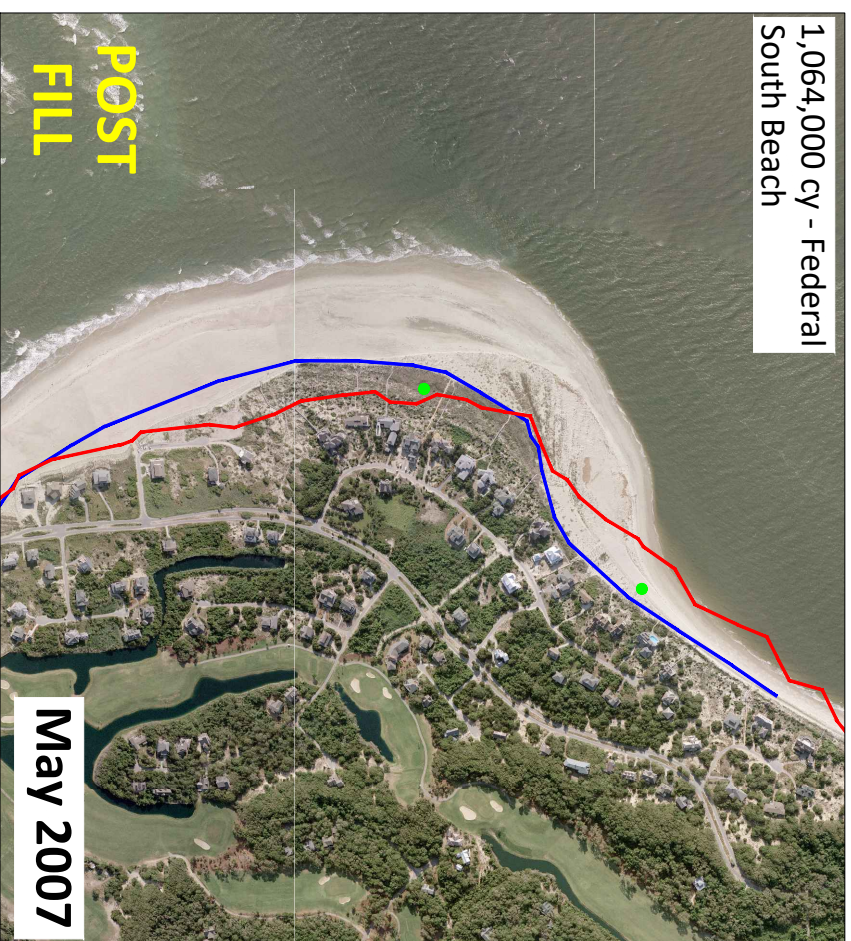
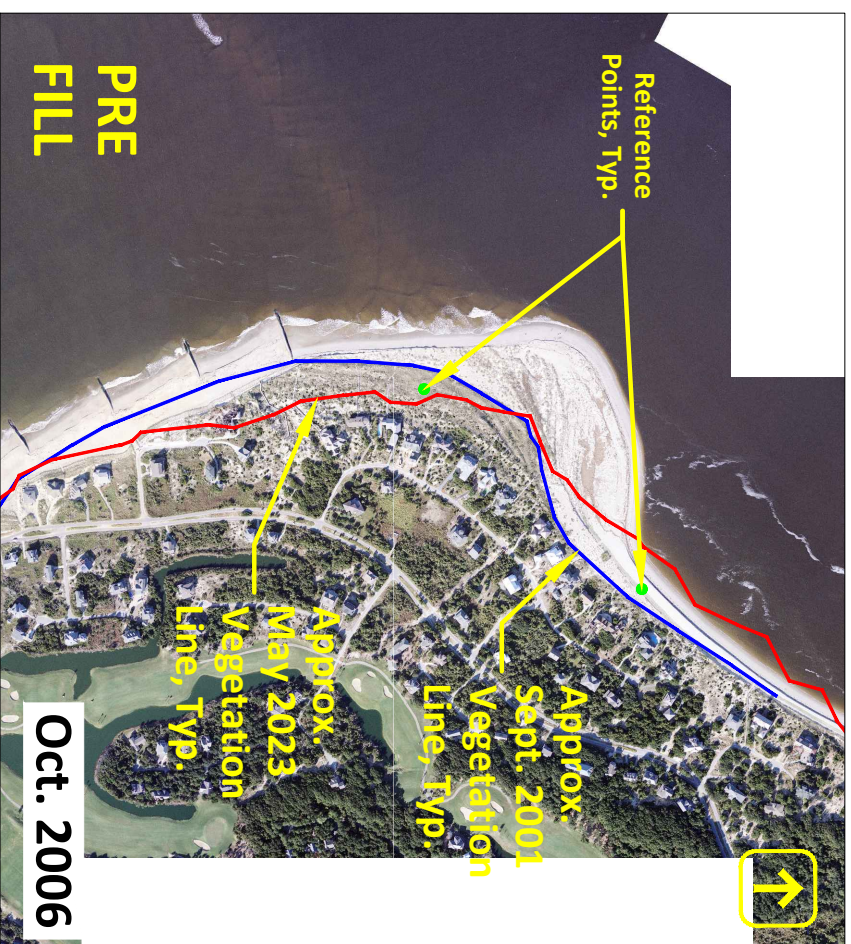


Figure E.3: Aerial photography at "The Point" Bald Head Island, NC

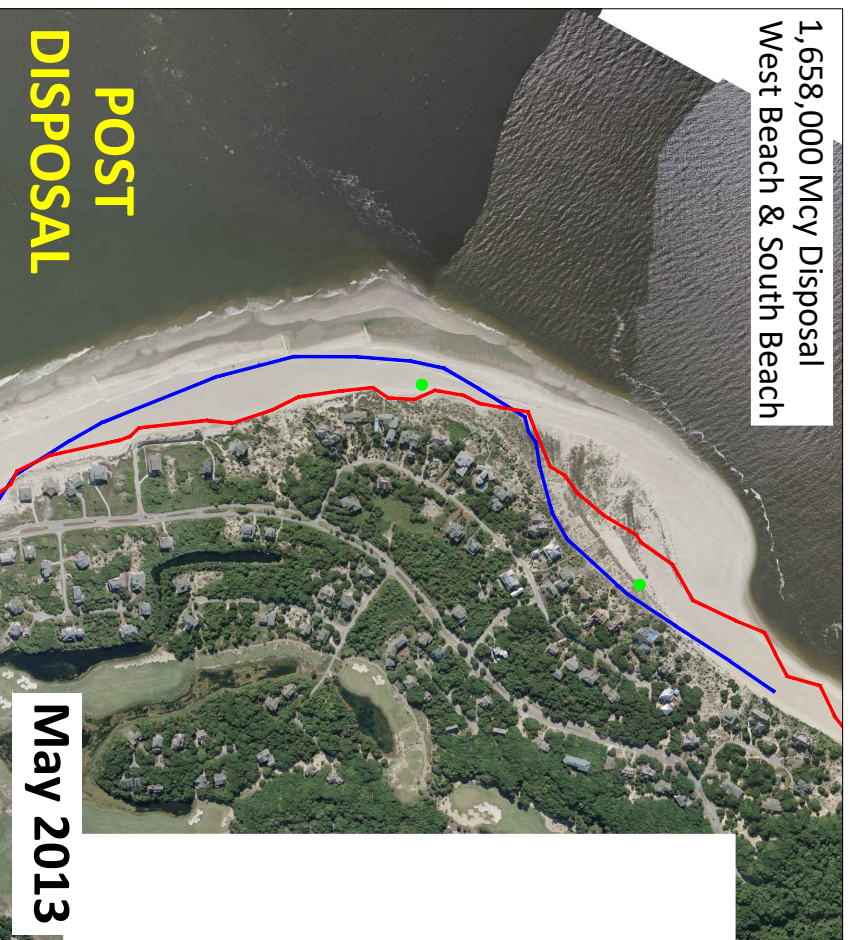
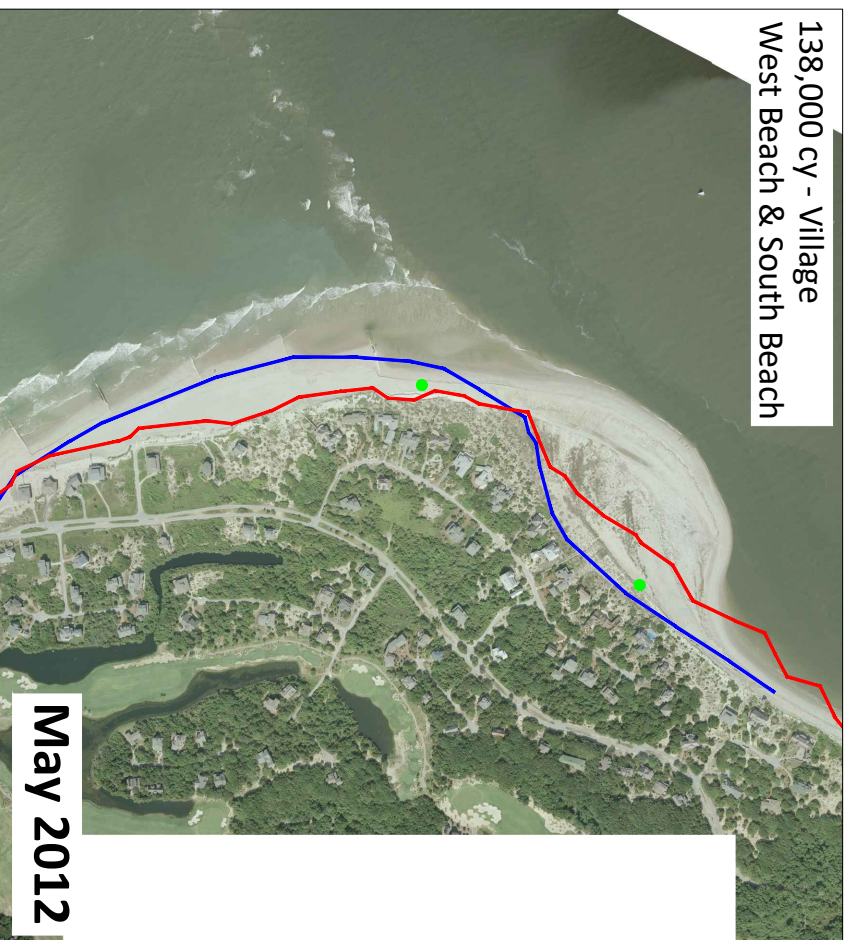
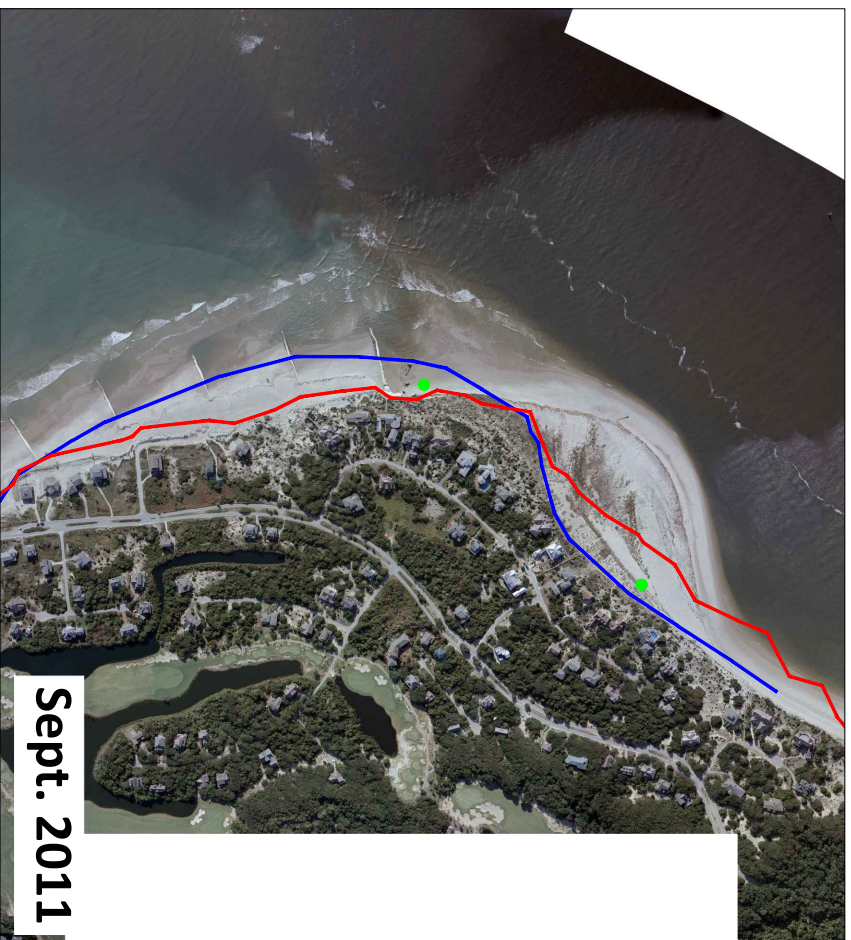
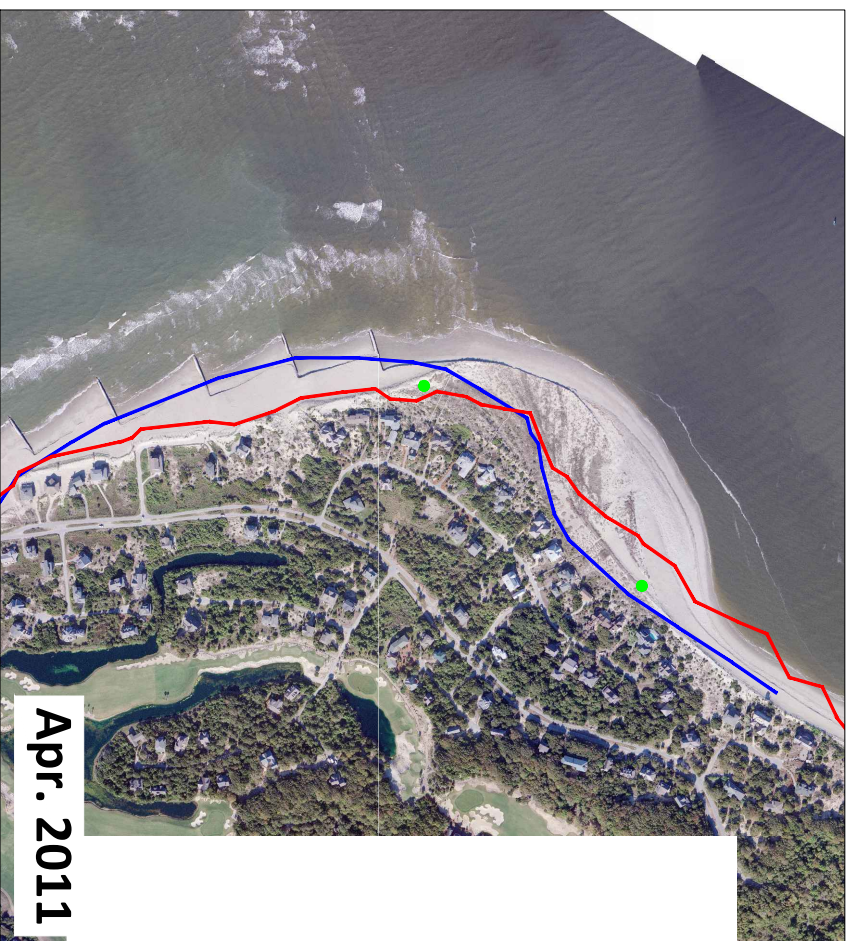
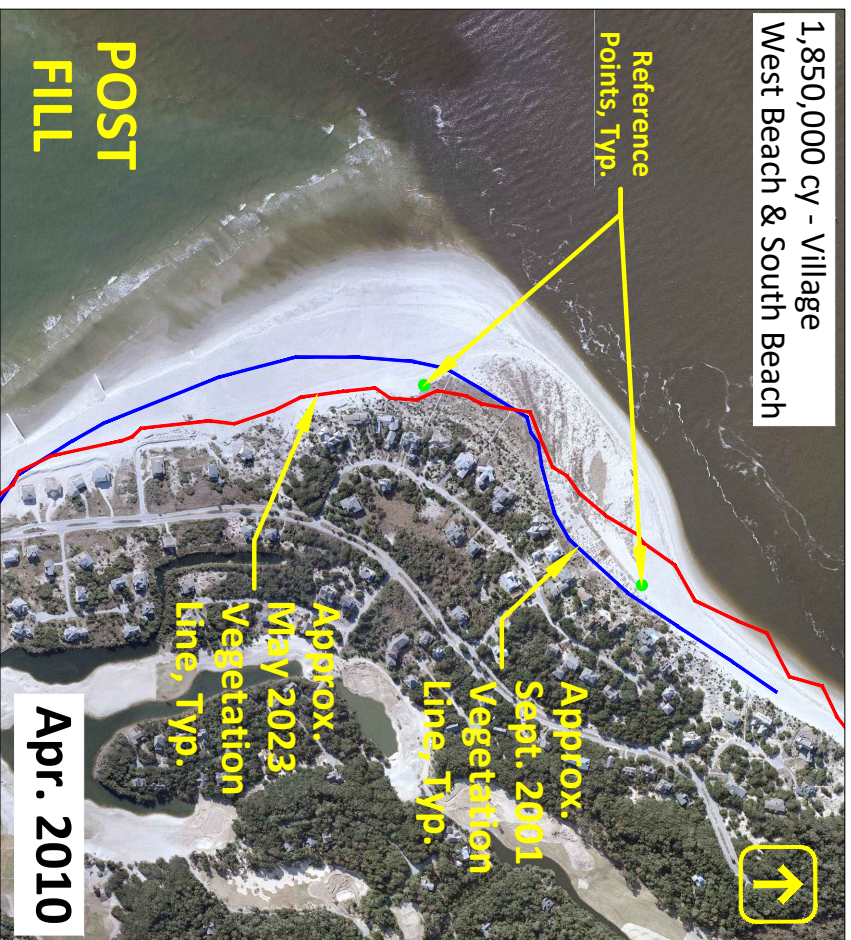
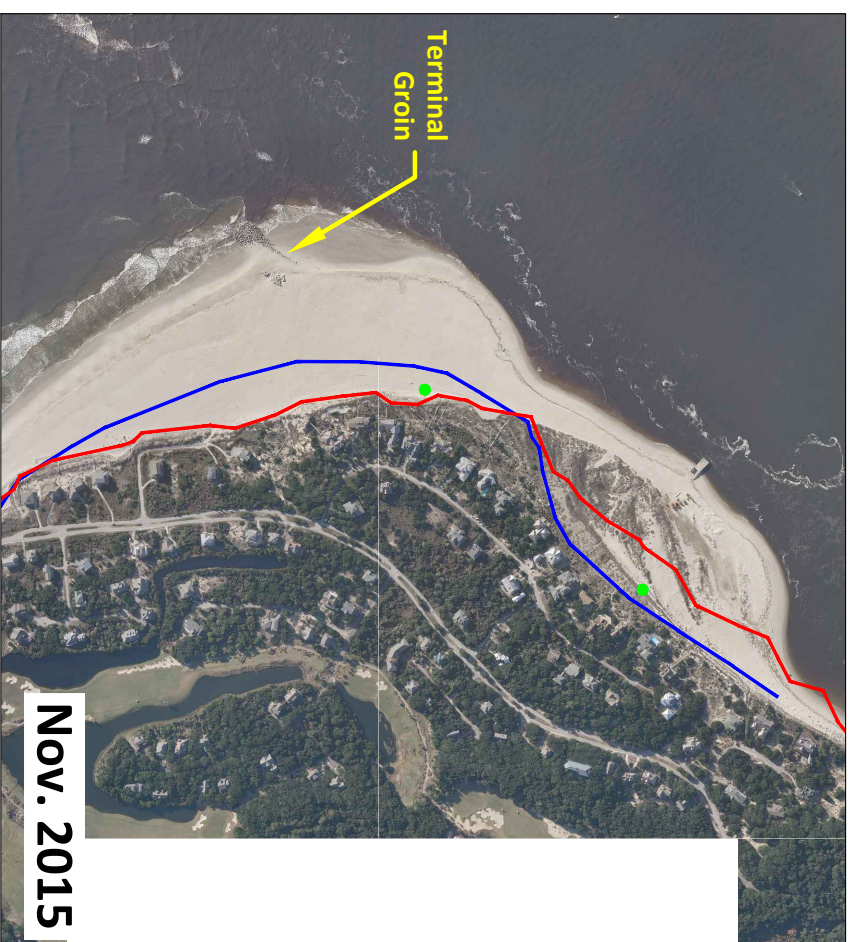
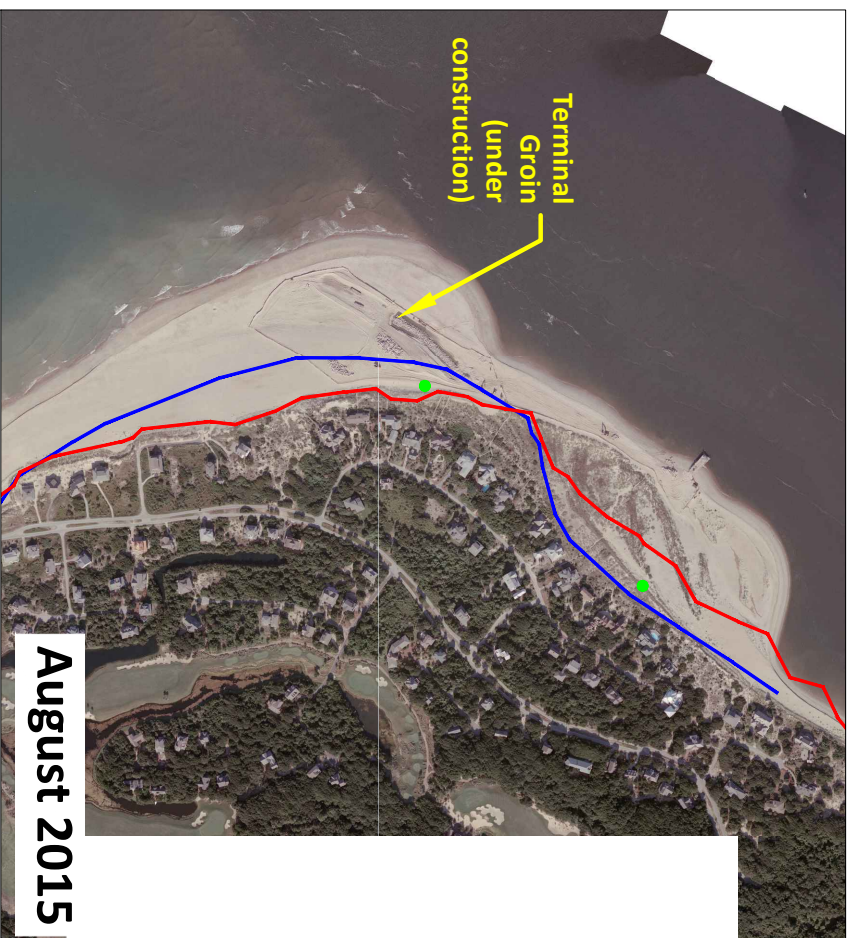
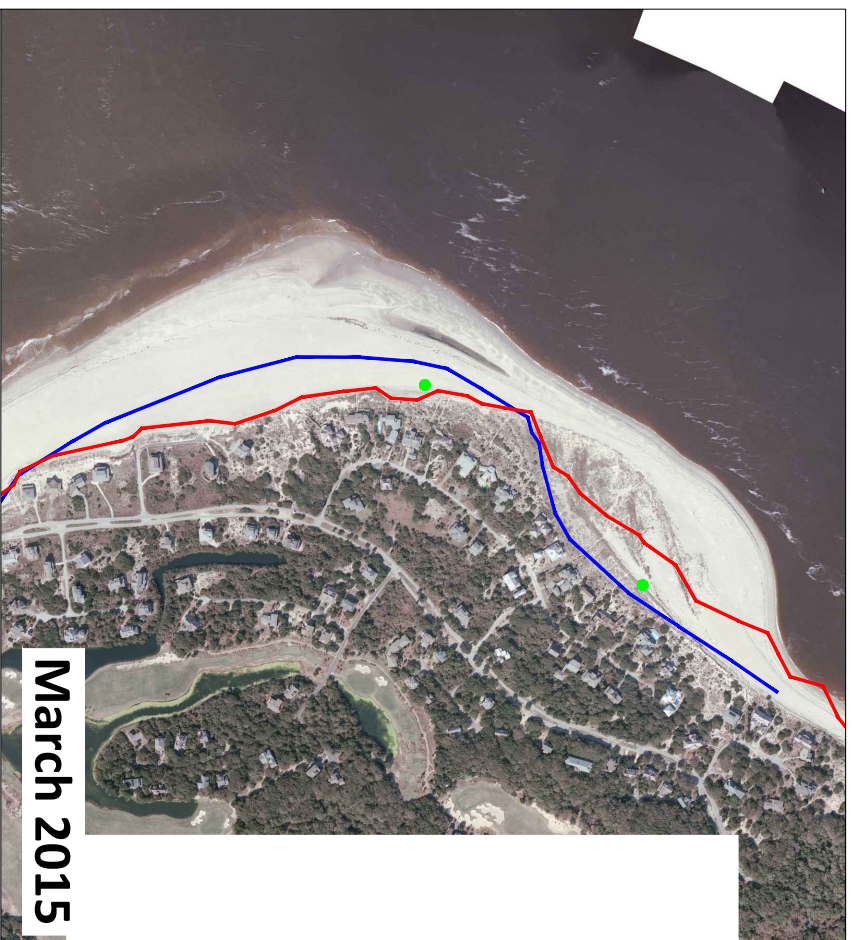
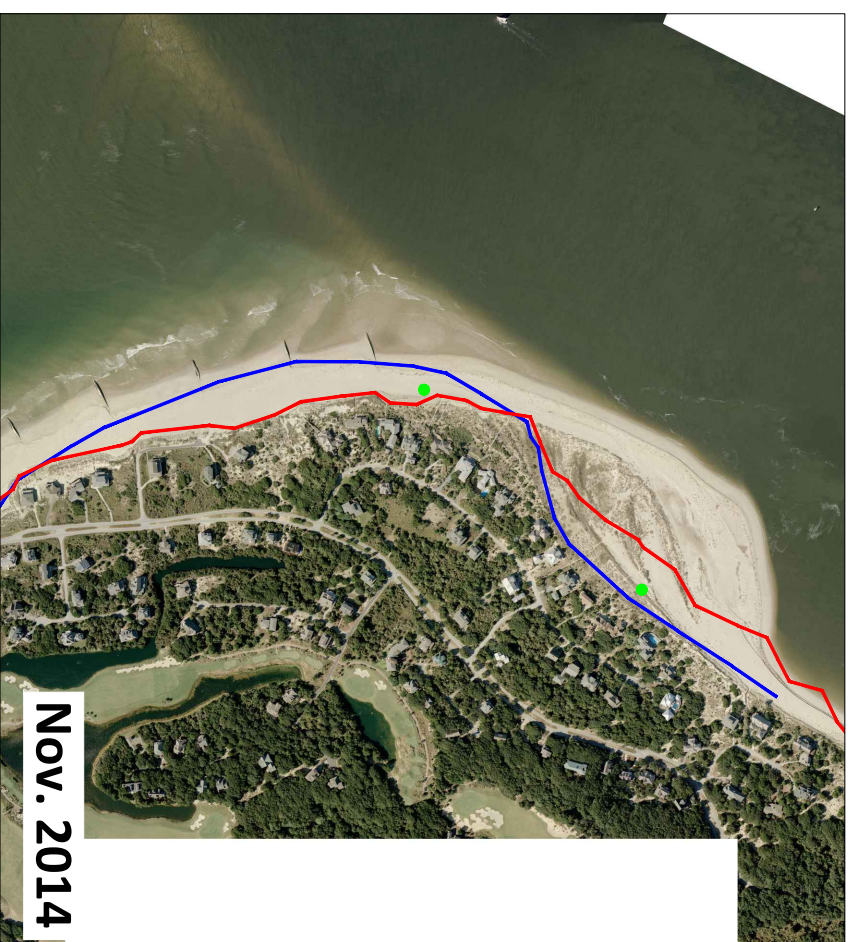
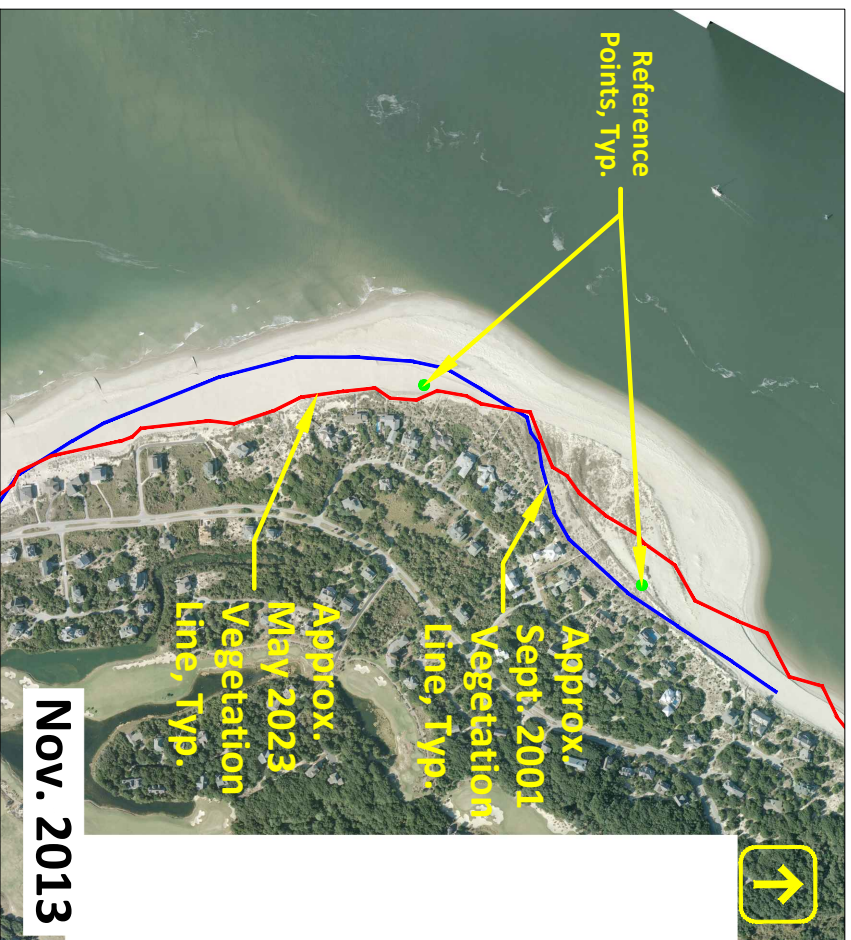
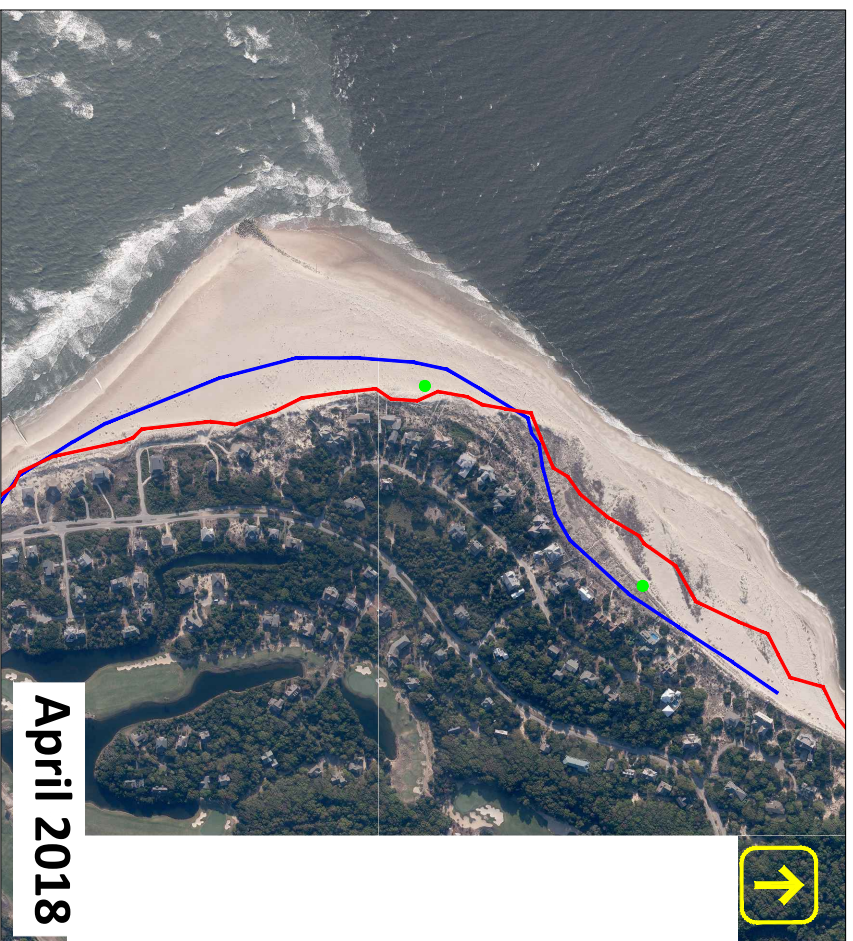
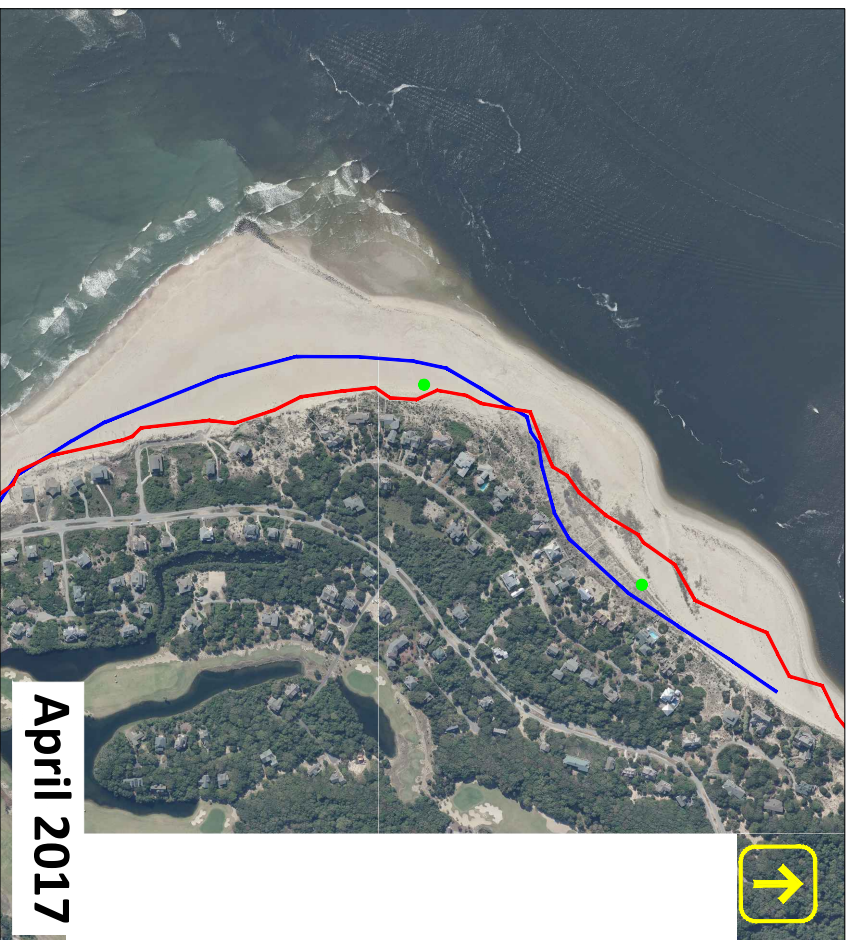
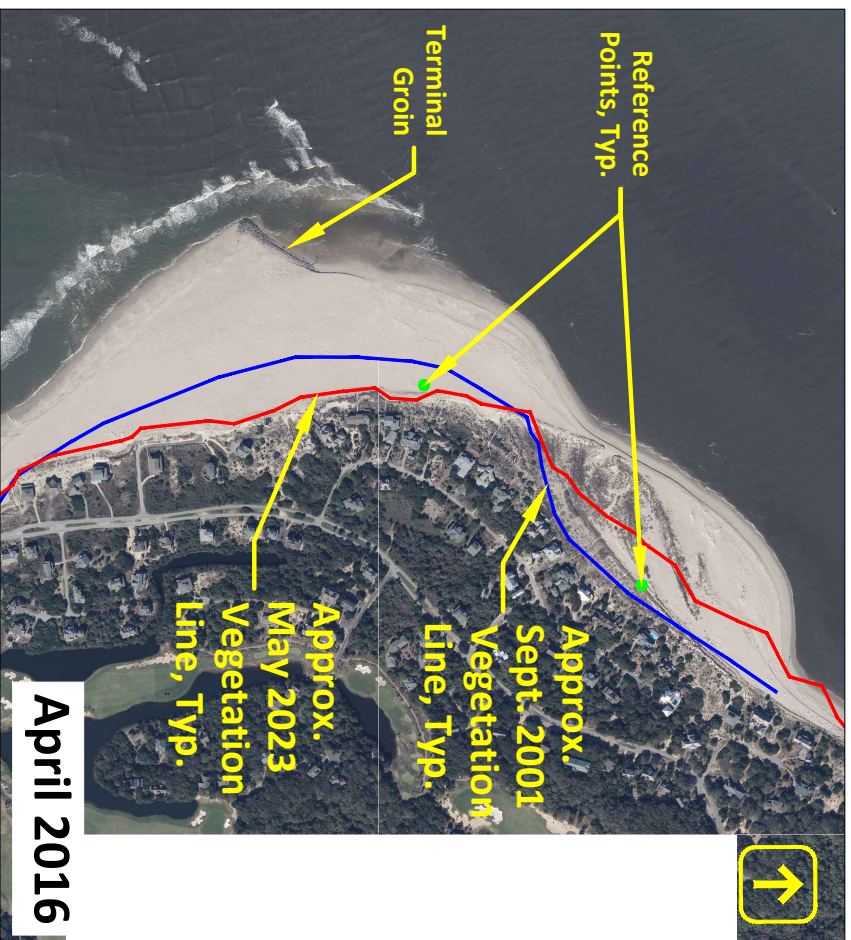


Figure E.4: Aerial photography at "The Point"  
Bald Head Island, NC



**Figure E.5:** Aerial photography at "The Point" Bald Head Island, NC



**Figure E.6:** Aerial photography at "The Point" Bald Head Island, NC

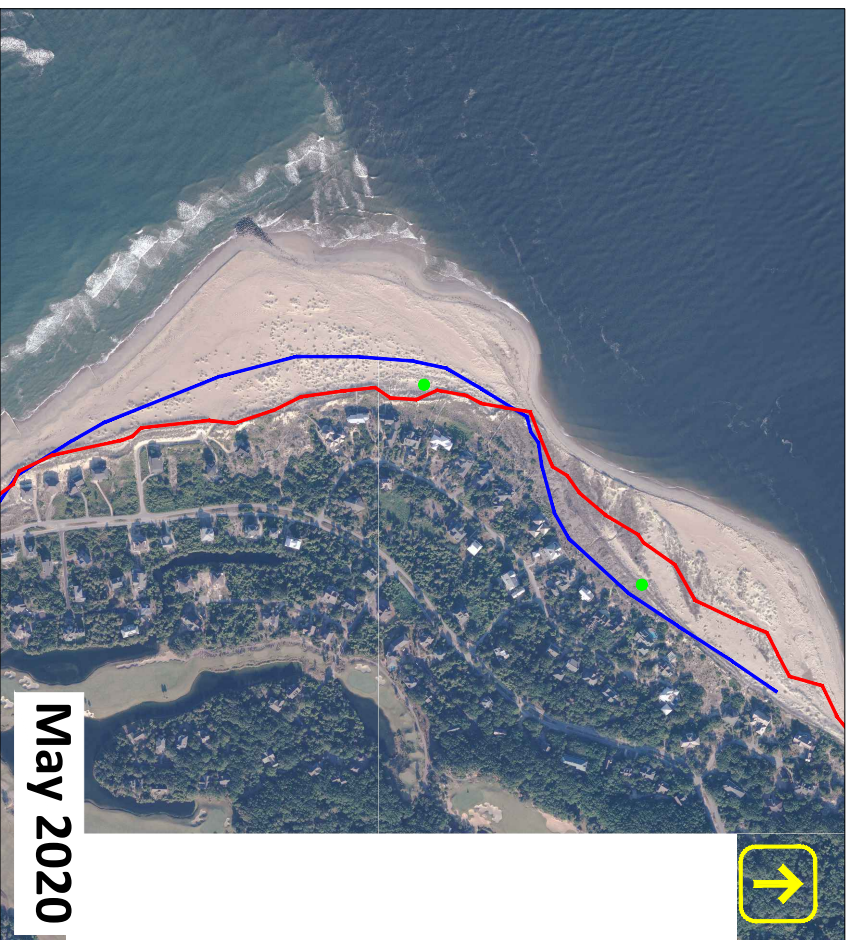
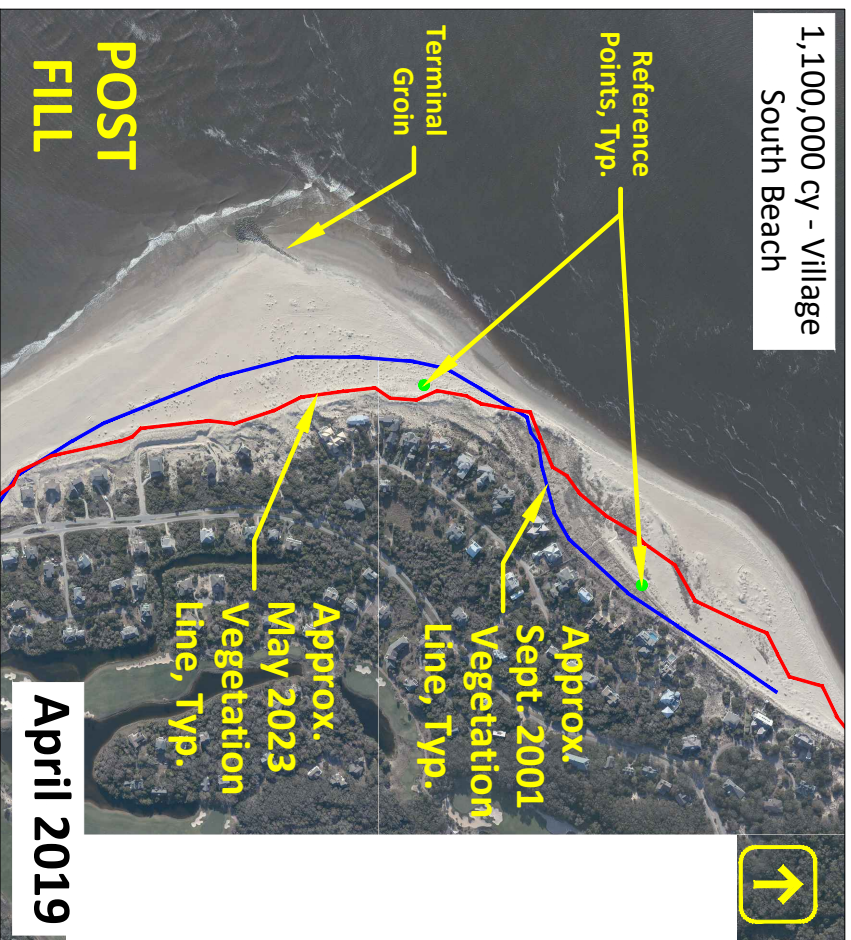
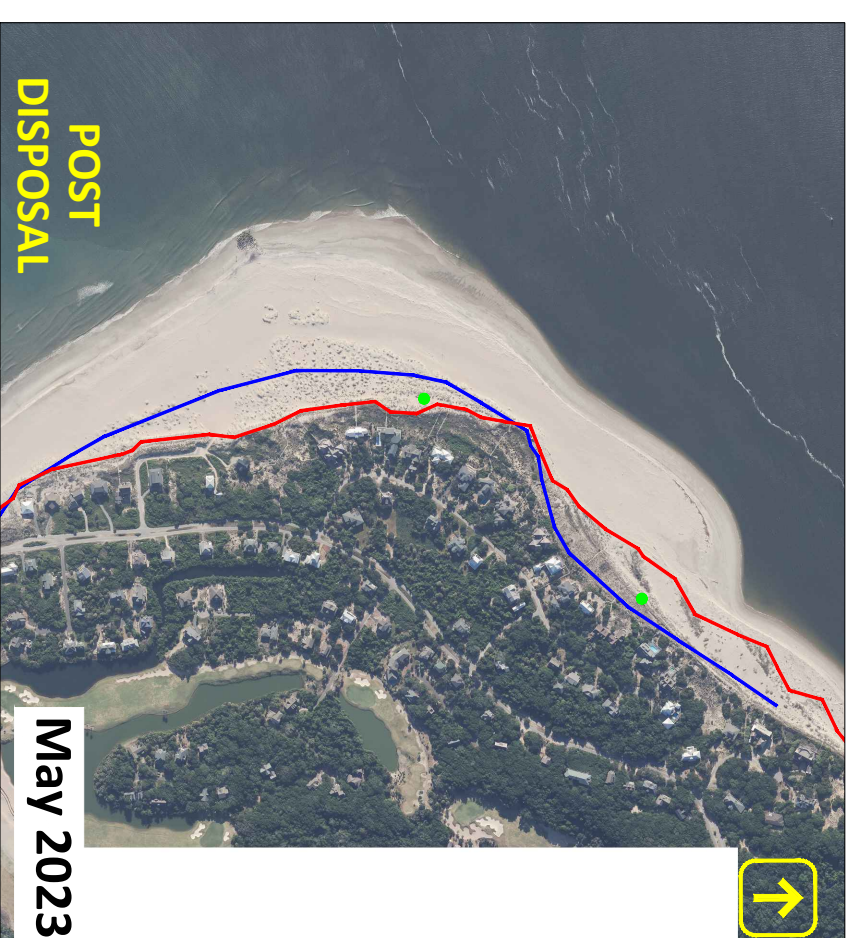
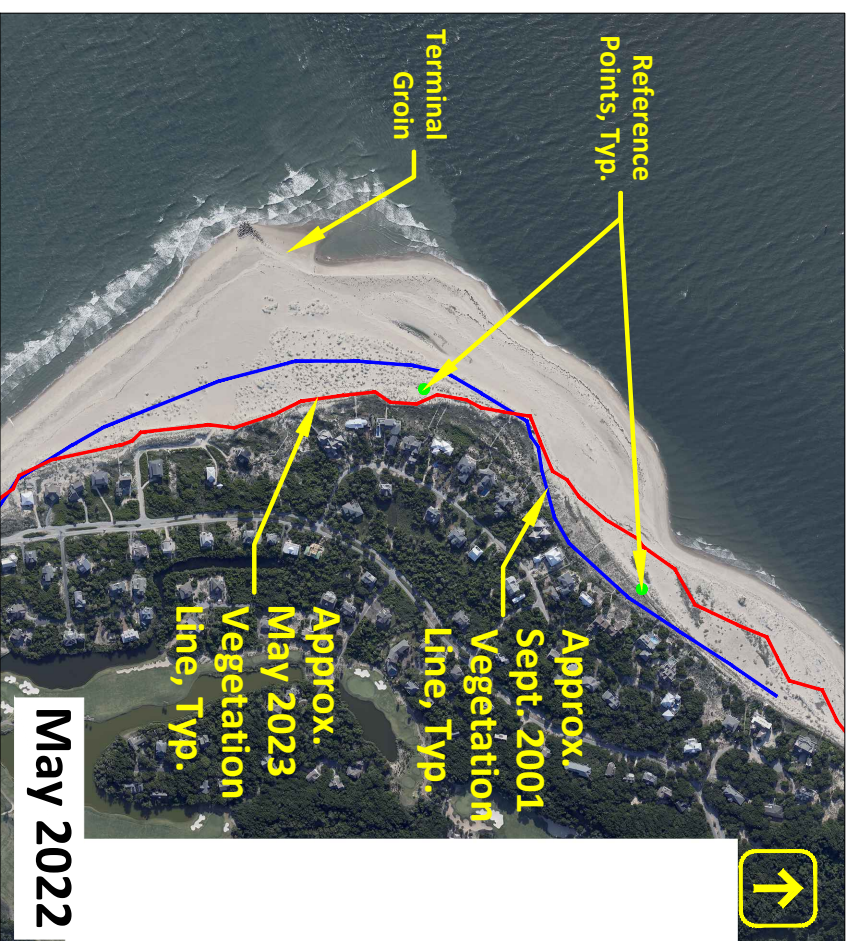


Figure E.7: Aerial photography at "The Point" Bald Head Island, NC





**Figure E.8:** Aerial photography at "The Point"  
Bald Head Island, NC