

APPENDIX B:

Aerial Photography (April 2024)

This appendix contains aerial photography of the Baldhead Island shoreline taken on April 13, 2024 by Greenman-Pedersen, Inc. (GPI)¹. An index sheet is provided as **Figure B-1** and the aerial photography is presented as **Figures B-2** through **B-13**. Also depicted in the figures are the monitoring baseline and profile azimuths summarized in **Table 2.1**.

¹ Greenman-Pederson, Inc.; 3909 Wrightsville Ave. Suite 200; Wilmington, NC 28403.

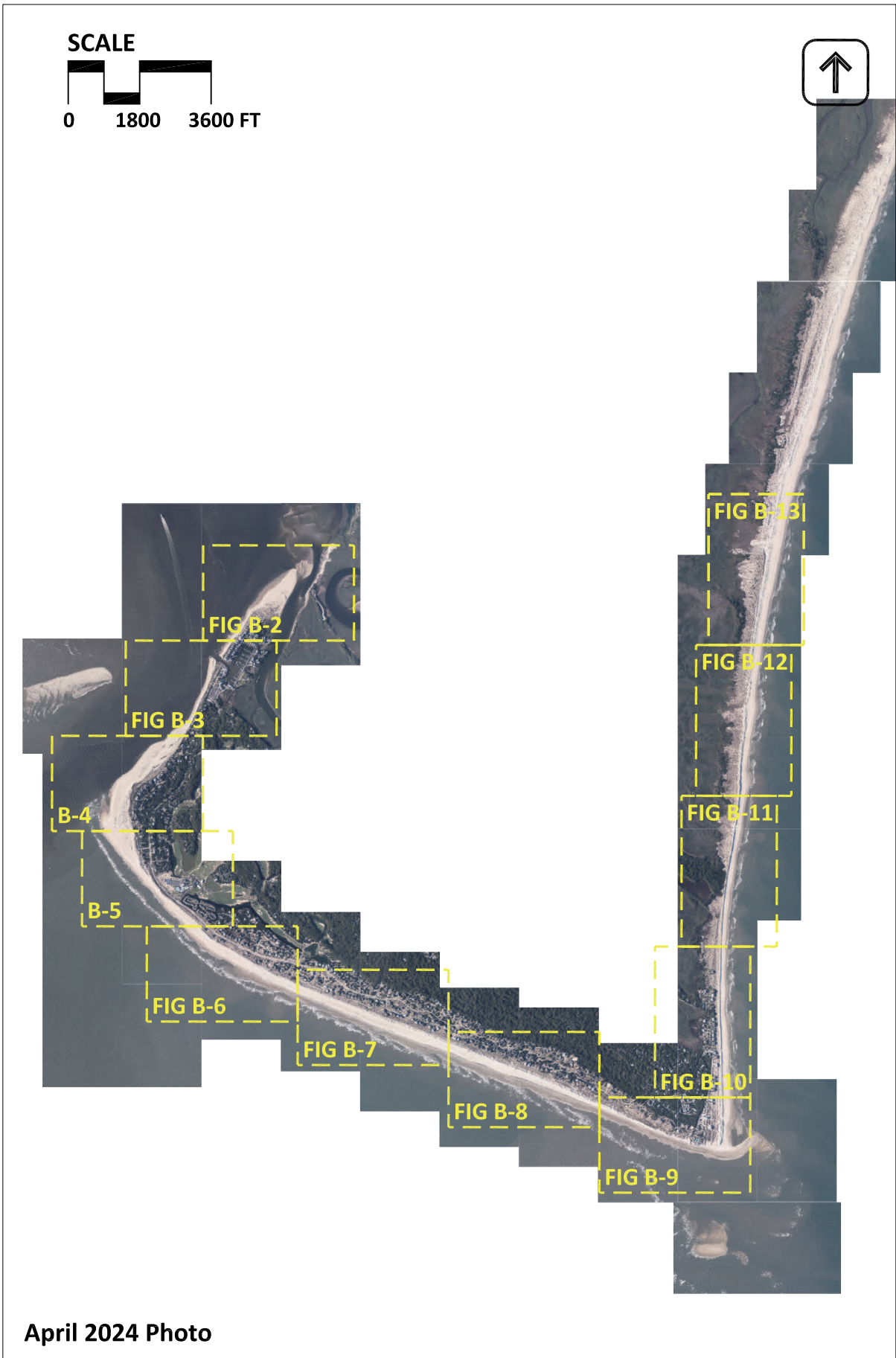


Figure B-1: Bald Head Island April 2024 aerial photography index sheet.



Figure B-2: Bald Head Island April 2024 aerial photography.



Figure B-3: Bald Head Island April 2024 aerial photography.

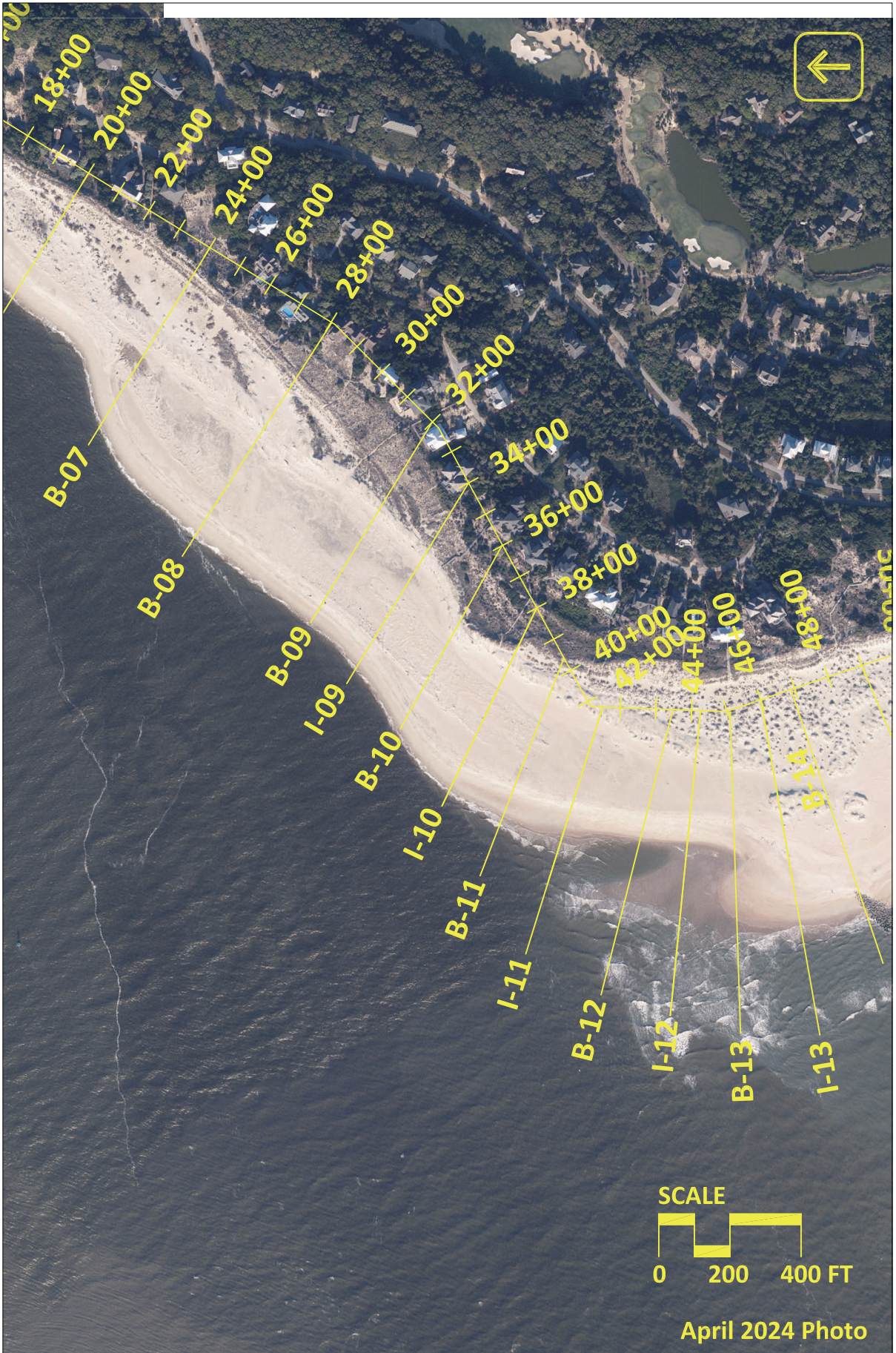


Figure B-4: Bald Head Island April 2024 aerial photography.

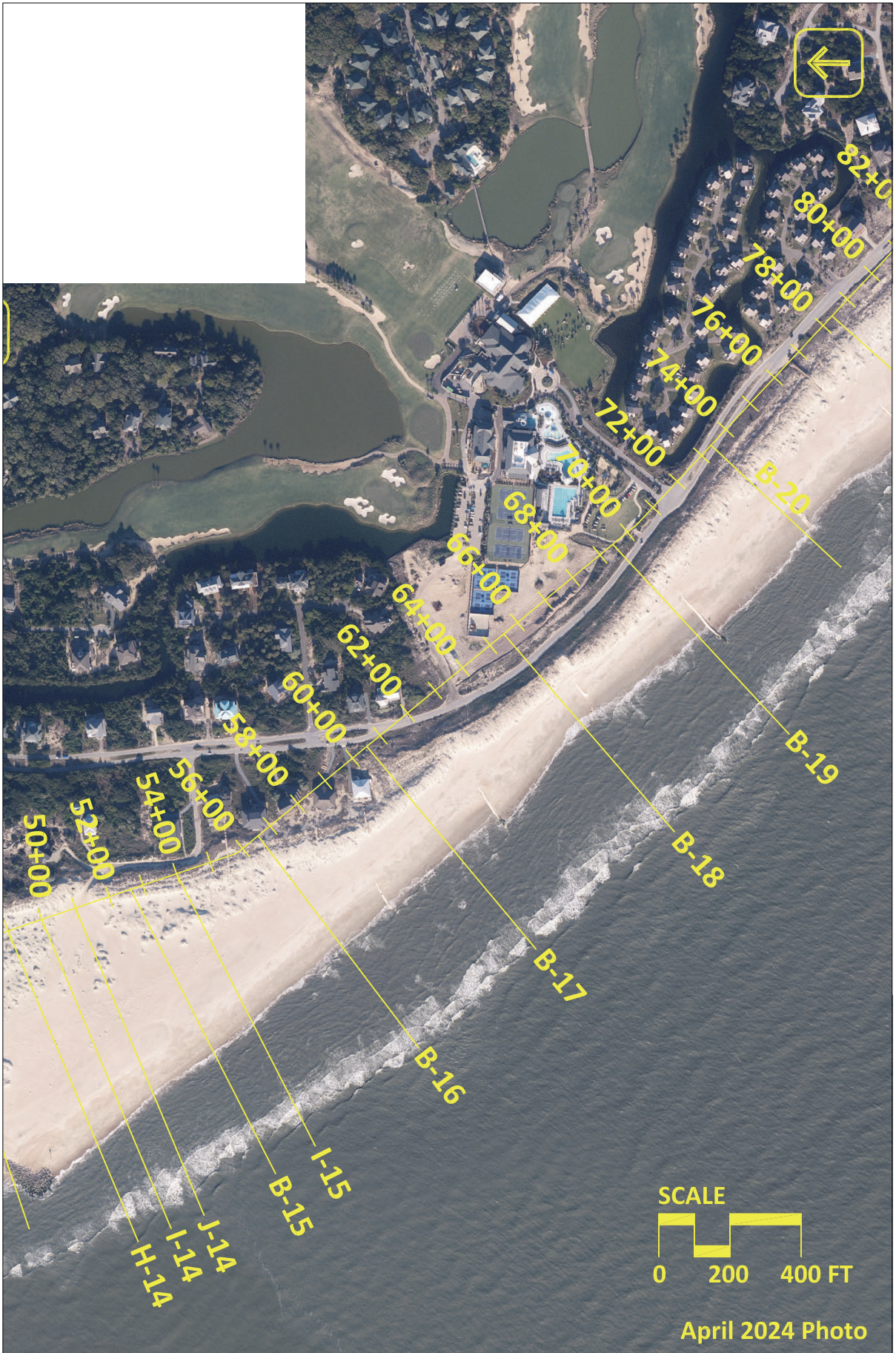


Figure B-5: Bald Head Island April 2024 aerial photography.

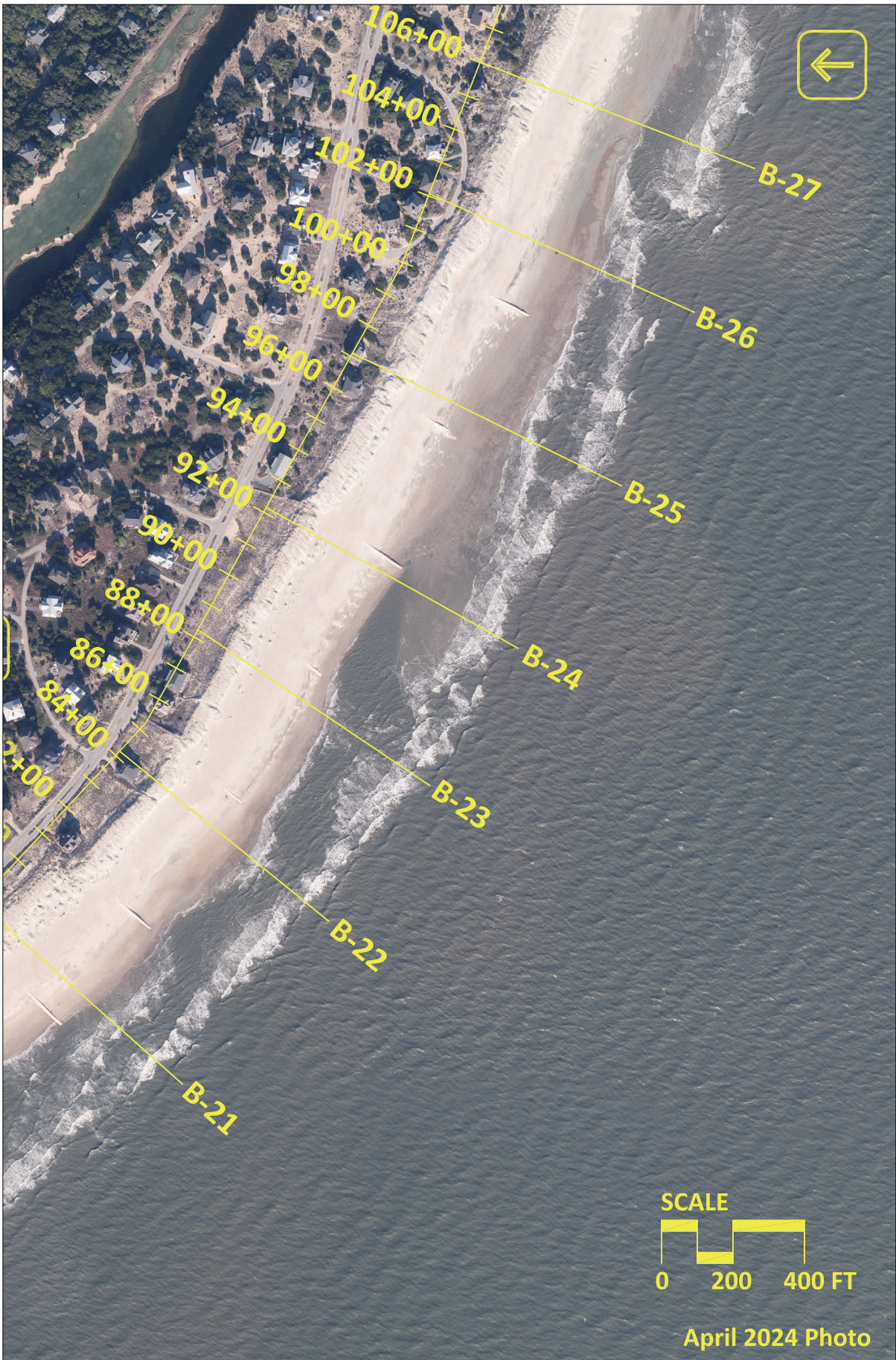


Figure B-6: Bald Head Island April 2024 aerial photography.

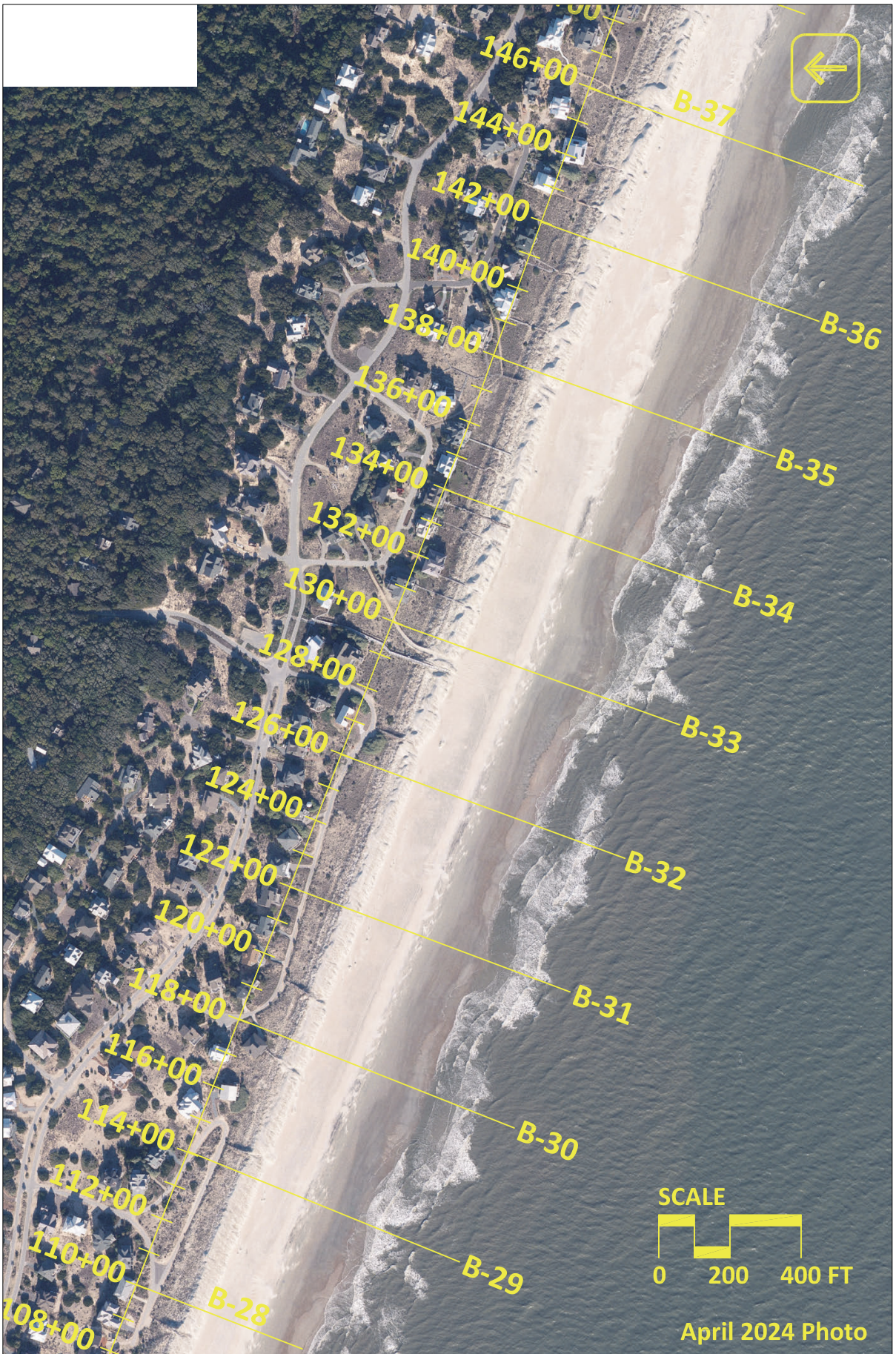


Figure B-7: Bald Head Island April 2024 aerial photography.



Figure B-8: Bald Head Island April 2024 aerial photography.

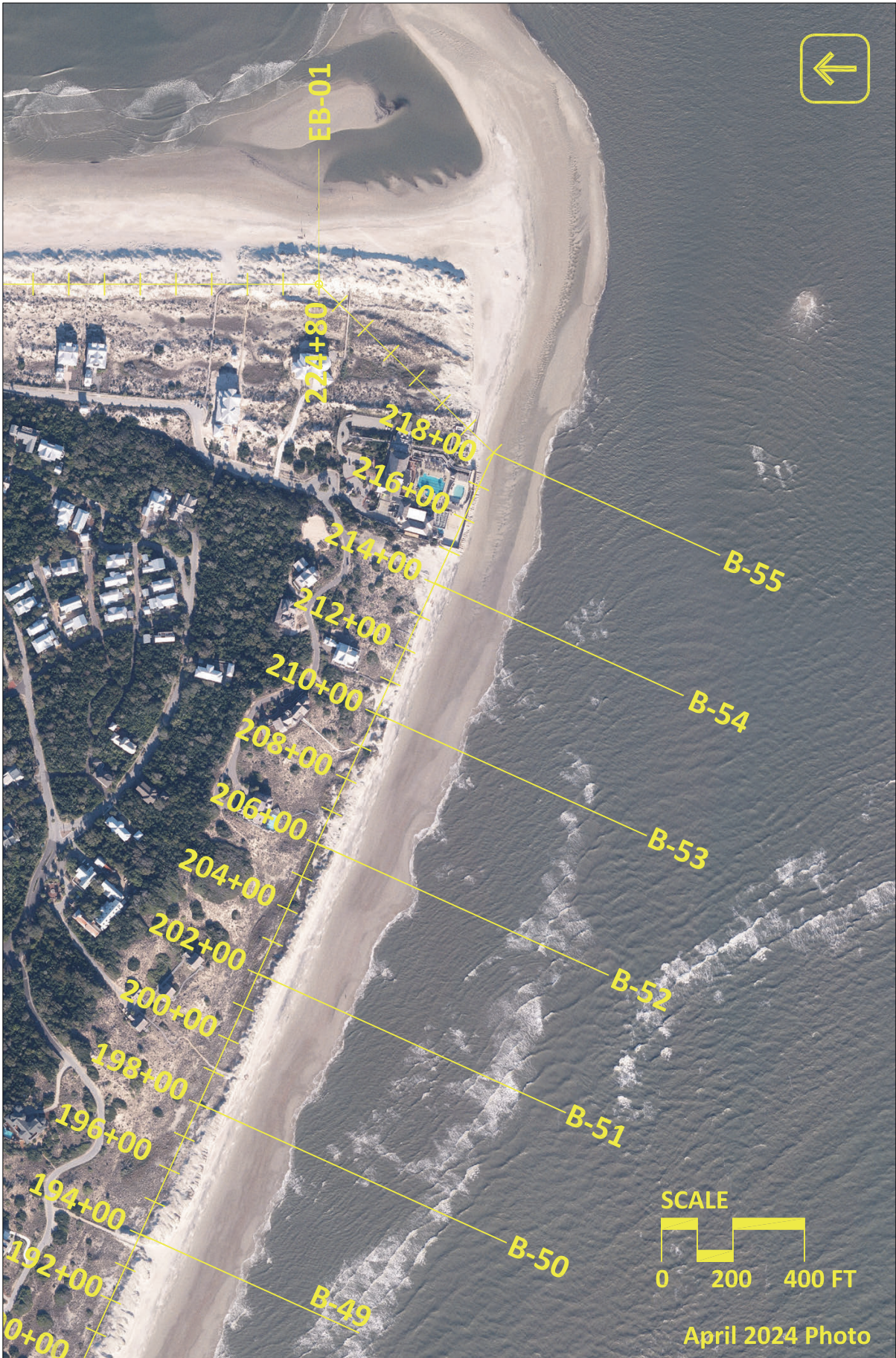


Figure B-9: Bald Head Island April 2024 aerial photography.



Figure B-10: Bald Head Island April 2024 aerial photography.



Figure B-11: Bald Head Island April 2024 aerial photography.



Figure B-12: Bald Head Island April 2024 aerial photography.



Figure B-13: Bald Head Island April 2024 aerial photography.