

APPENDIX D:

Aerial Photography (May 2023)

This appendix contains aerial photography of the Baldhead Island shoreline taken on May 10, 2023 by Greenman-Pedersen, Inc. (GPI)¹ An index sheet is provided as **Figure D-1** and the aerial photography is presented as **Figures D-2** through **D-13**. Also depicted in the figures are the monitoring baseline and profile azimuths summarized in **Table 2.1**.

¹ Greenman-Pederson, Inc.; 3909 Wrightsville Ave. Suite 200; Wilmington, NC 28403.

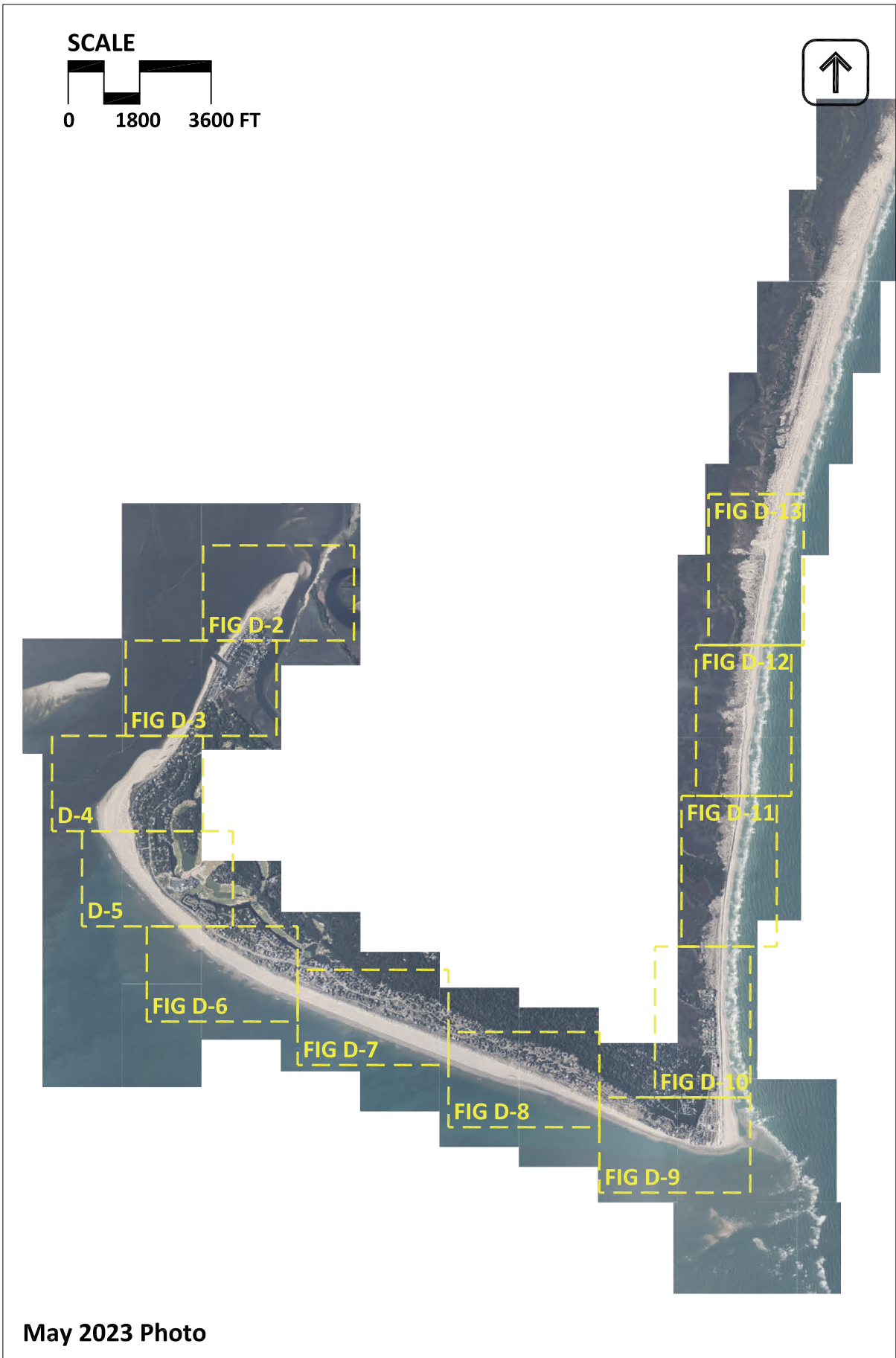


Figure D-1: Bald Head Island May 2023 aerial photography index sheet.

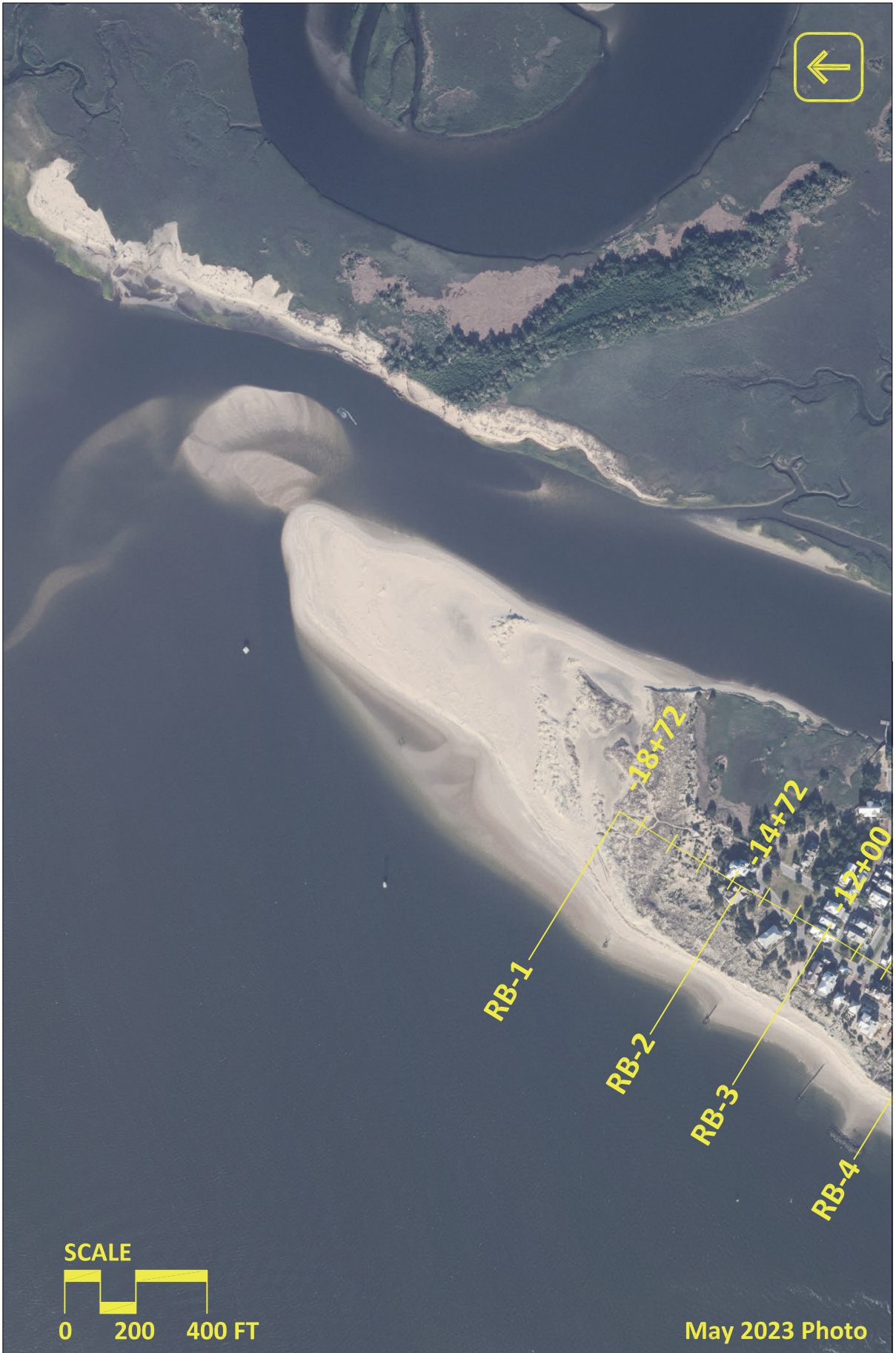


Figure D-2: Bald Head Island May 2023 aerial photography.



Figure D-3: Bald Head Island May 2023 aerial photography.

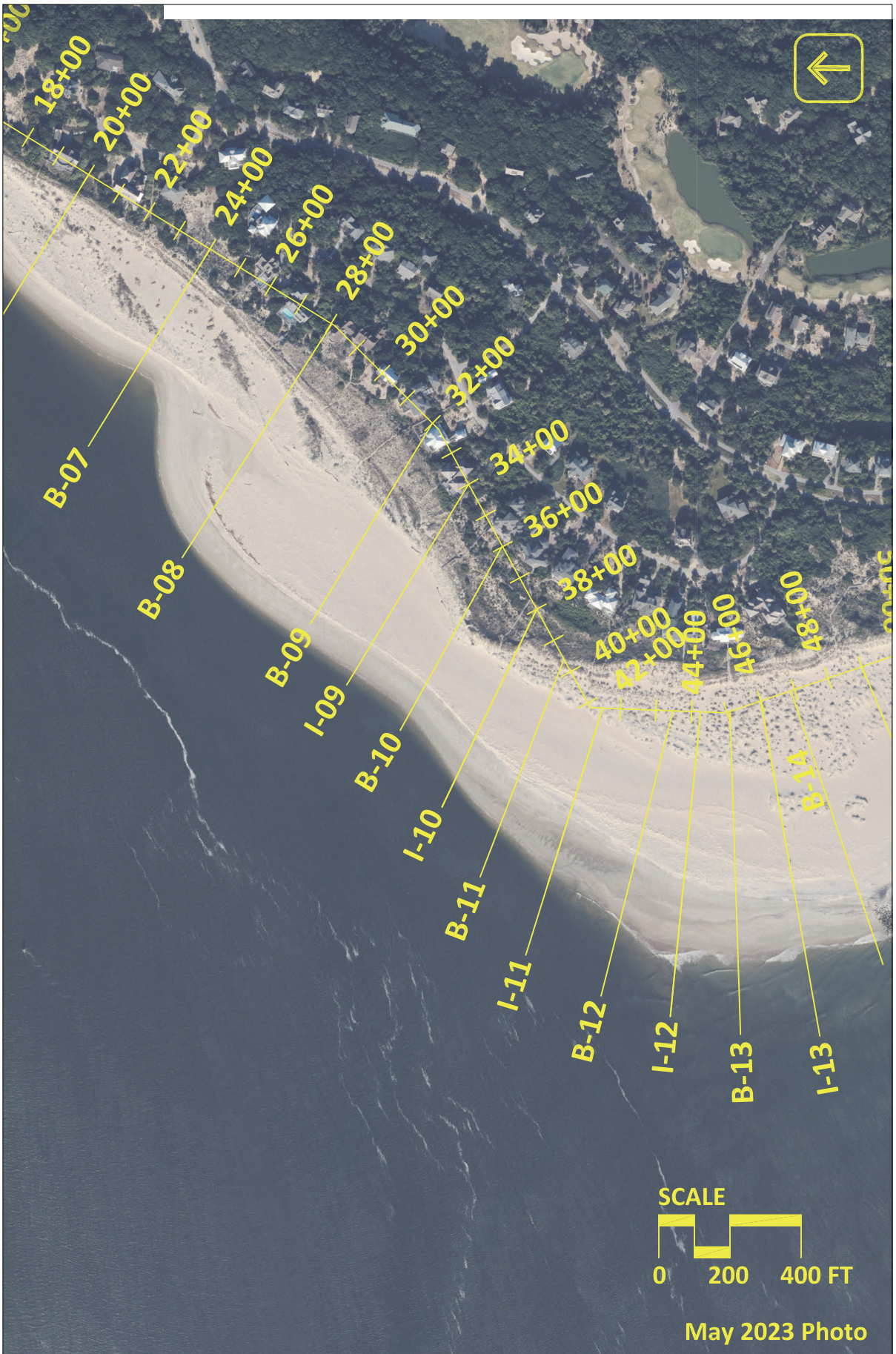


Figure D-4: Bald Head Island May 2023 aerial photography.



Figure D-5: Bald Head Island May 2023 aerial photography.

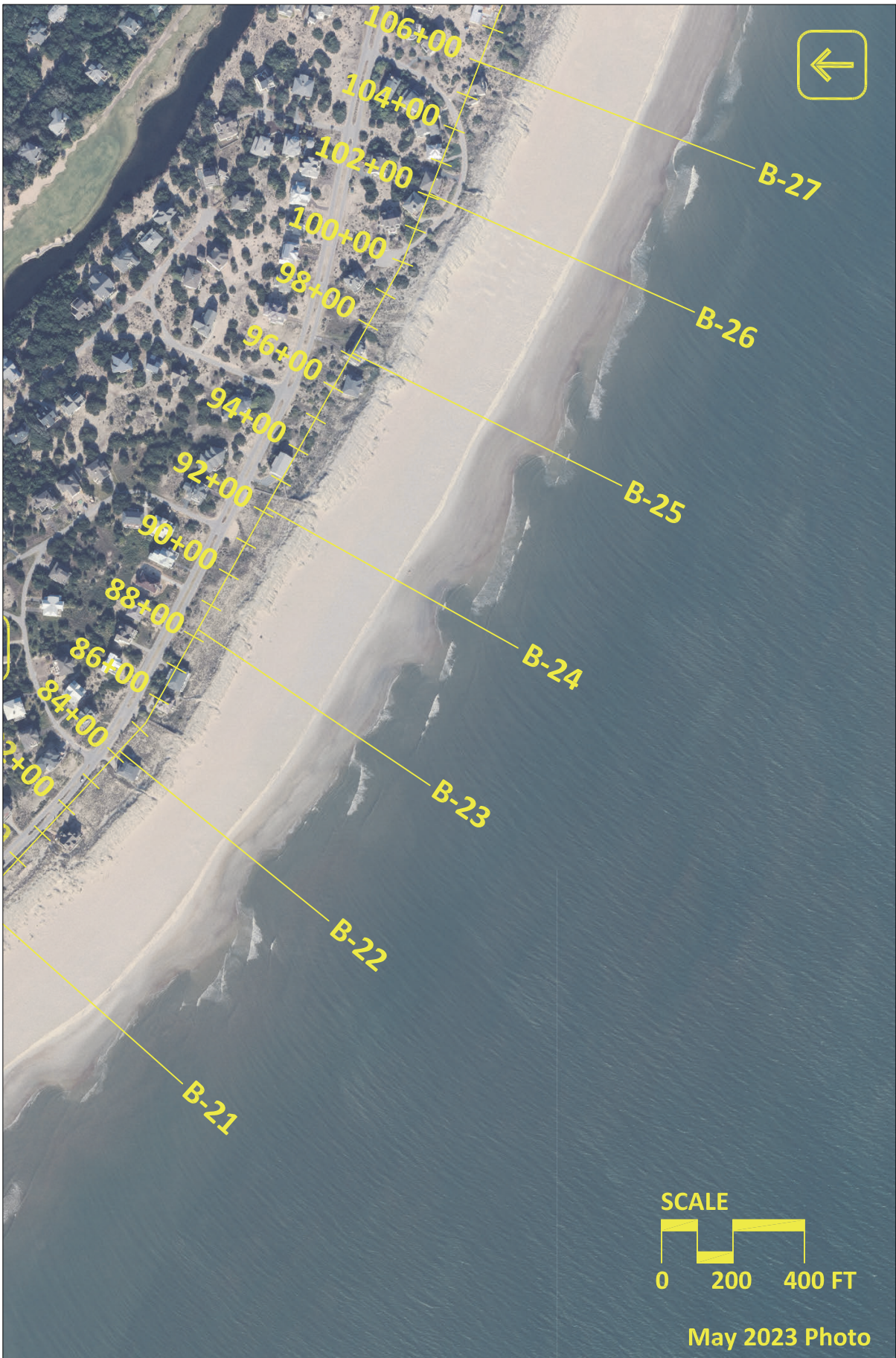


Figure D-6: Bald Head Island May 2023 aerial photography.

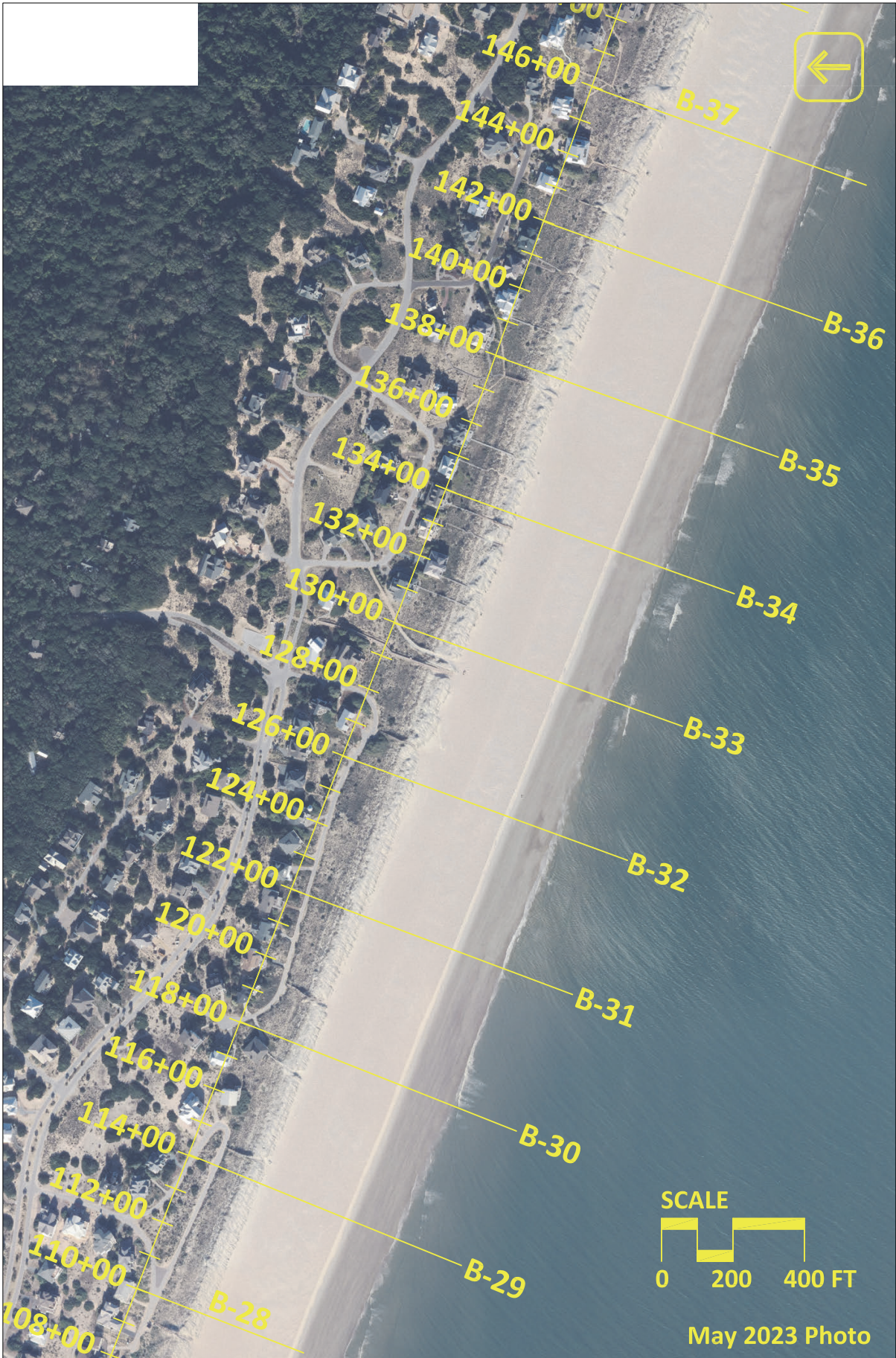


Figure D-7: Bald Head Island May 2023 aerial photography.

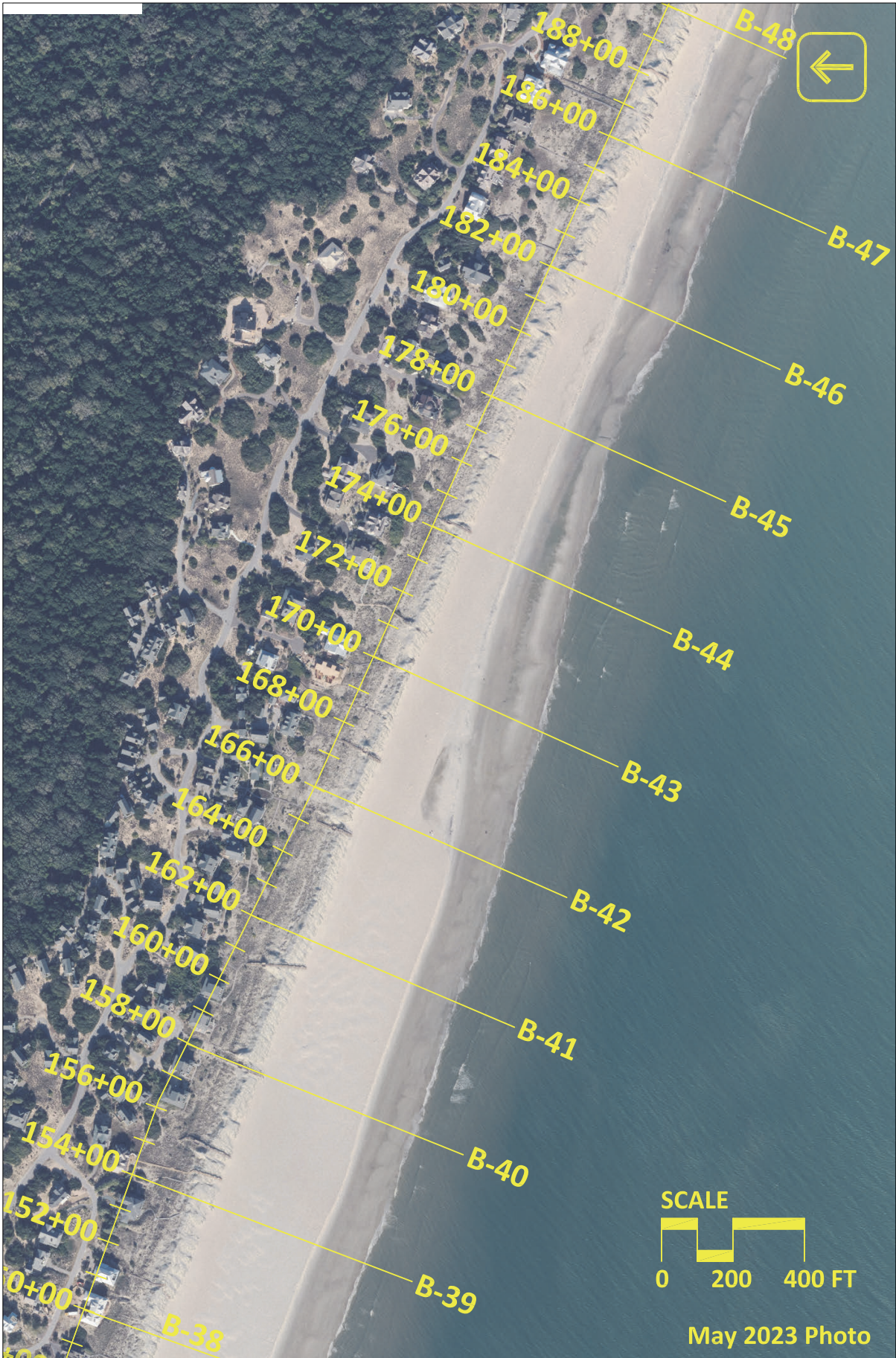


Figure D-8: Bald Head Island May 2023 aerial photography.

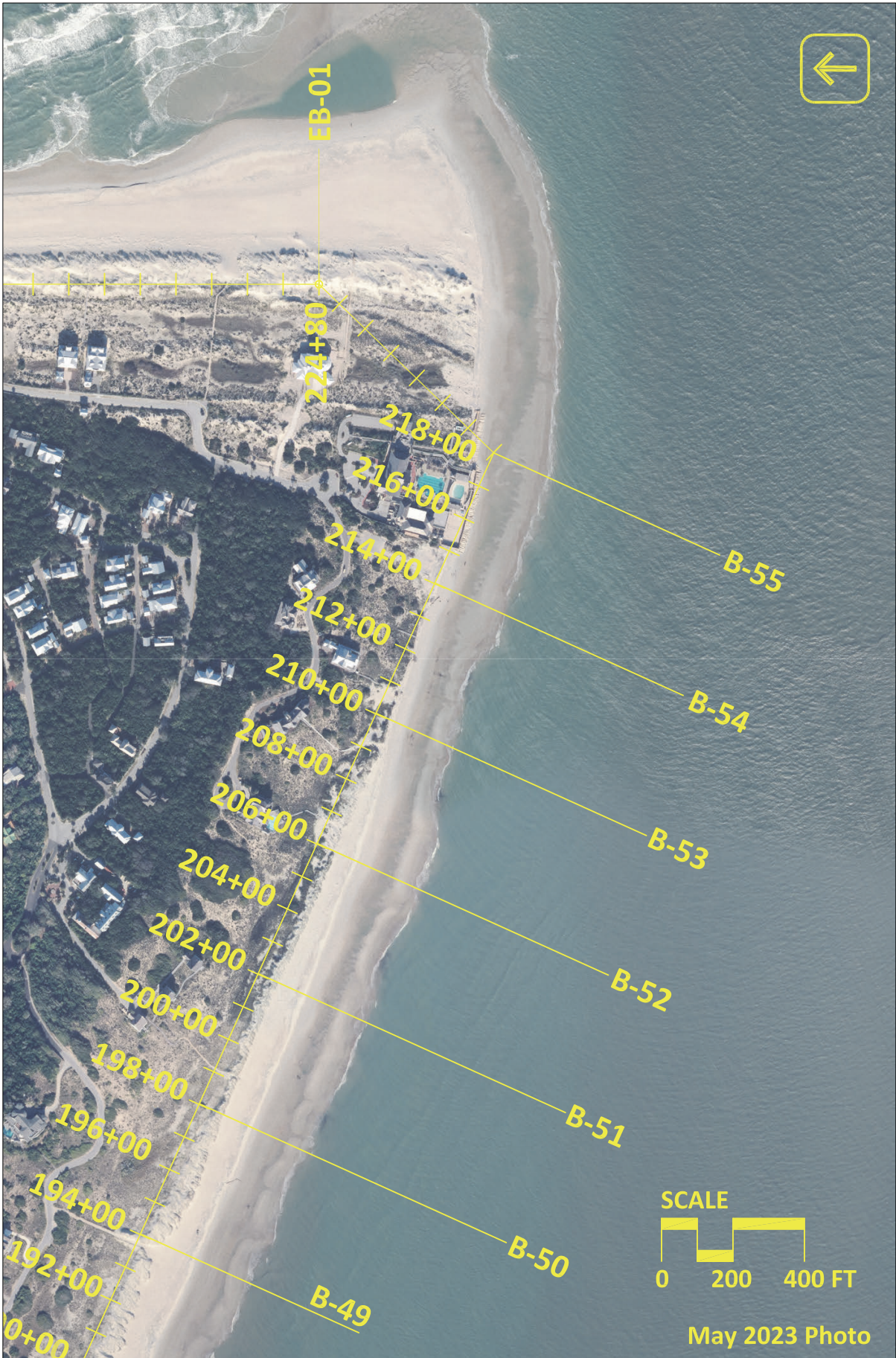


Figure D-9: Bald Head Island May 2023 aerial photography.



Figure D-10: Bald Head Island May 2023 aerial photography.



Figure D-11: Bald Head Island May 2023 aerial photography.

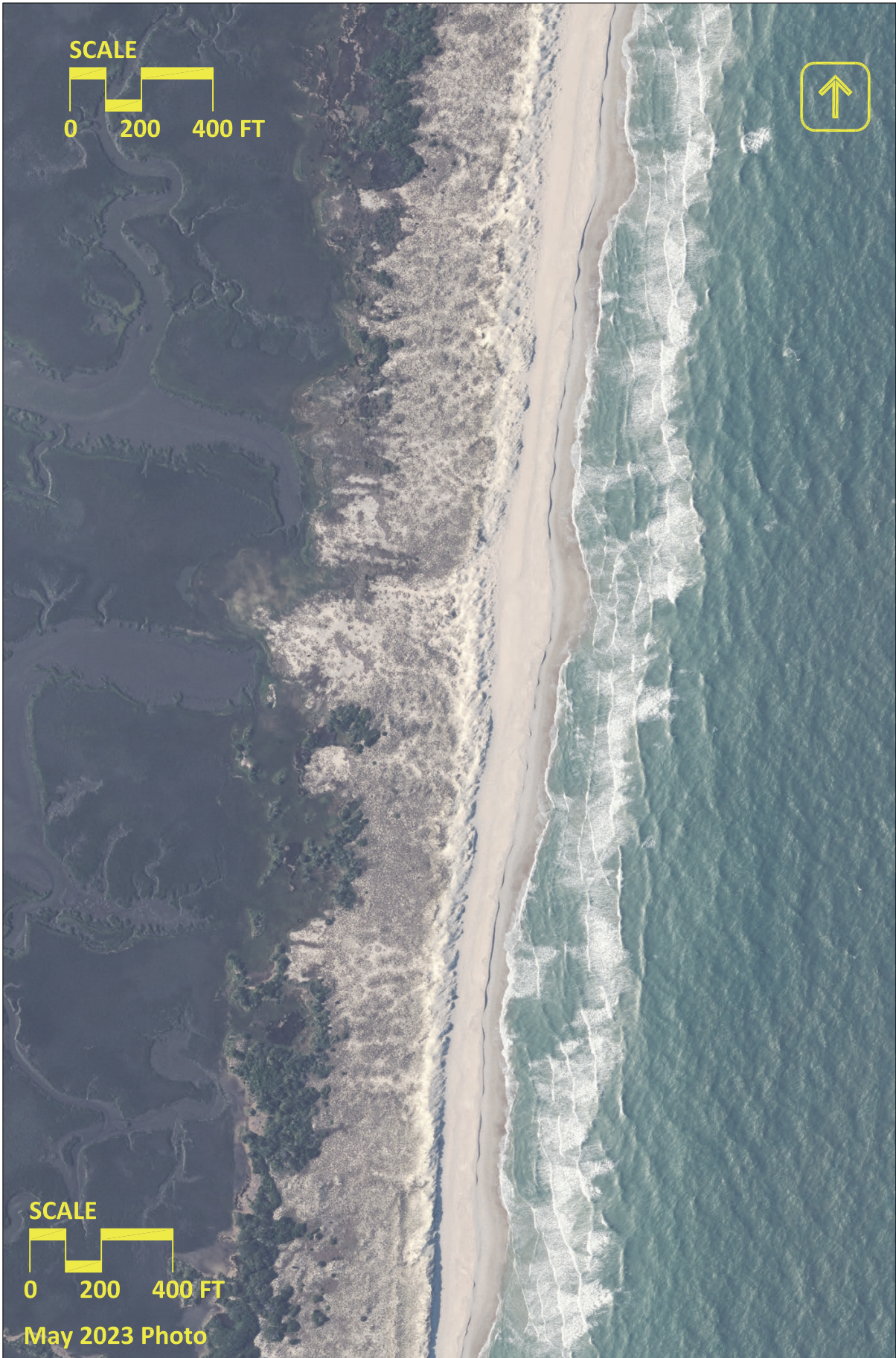


Figure D-12: Bald Head Island May 2023 aerial photography.

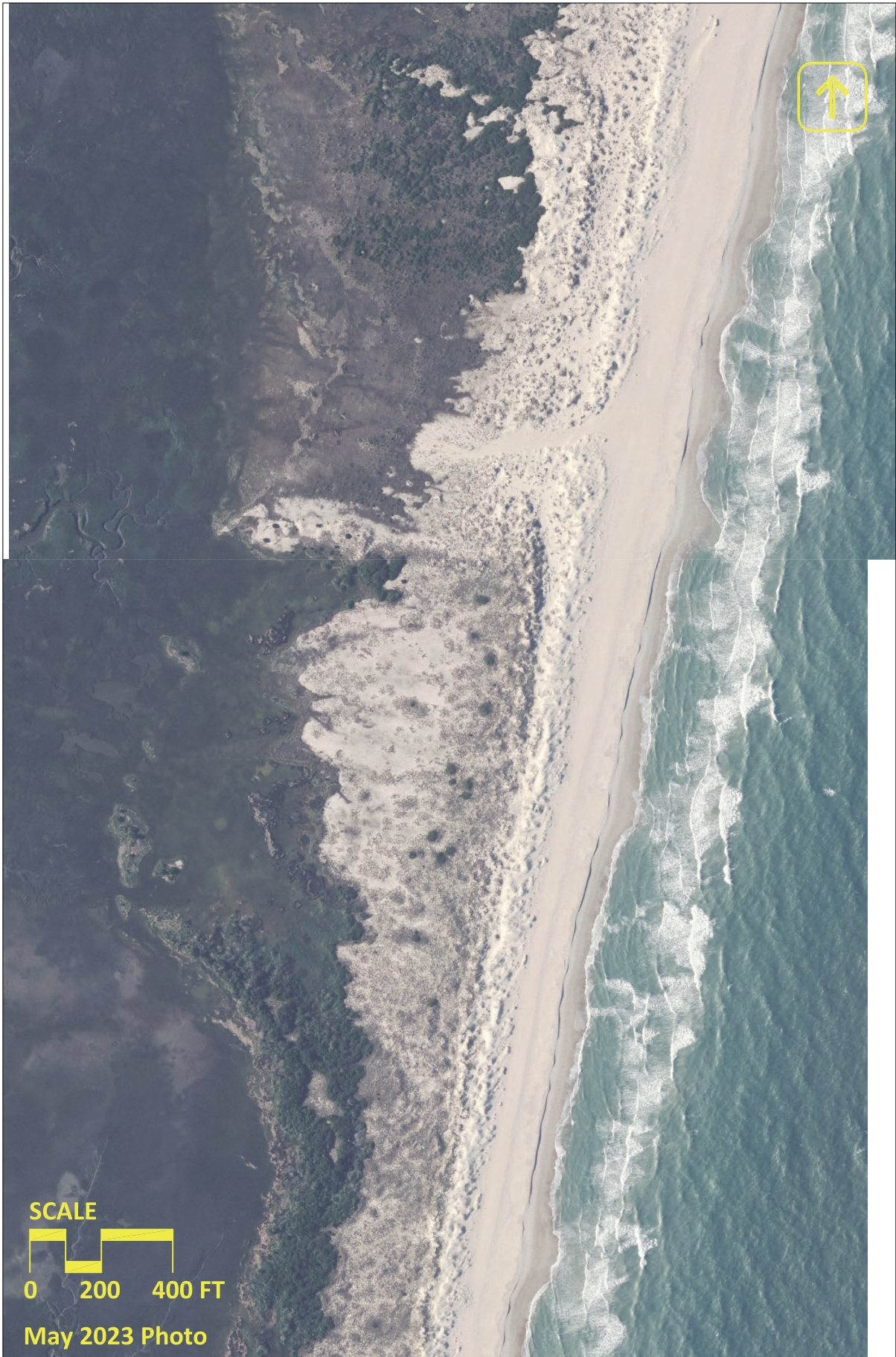


Figure D-13: Bald Head Island May 2023 aerial photography.