



The Village of Bald Head Island

Wastewater Collection System Maintenance Phase III

Addendum
Posted 12/9/2024

Project Contact: Mark Johnston, Project Manager

Email: mjohnston@villagebhi.org

Date of Release: December 3, 2024

Due Date: December 12, 2024, 11:00 a.m.

- Can you supply the pump conditions, i.e., discharge head and flow, for each station?

This information is not available at this time. However, contractors can schedule a site visit prior to the bid closing to make observations.

- Is there a bypass connection for these stations or a manhole on the downstream side in close proximity?

No, the sewer systems at all 3 locations are forced mains.

- Can you supply a sketch or as-built drawings for the wet well replacements?

This information is not available at this time. However, contractors can schedule a site visit prior to the bid closing to make observations.

- Will the new check valves remain in the wet well or be relocated outside the wet well?

The new check valves should be relocated outside the wet well in their own vault.

Wastewater Collection System Maintenance Phase III

Addendum

Posted 12/9/2024

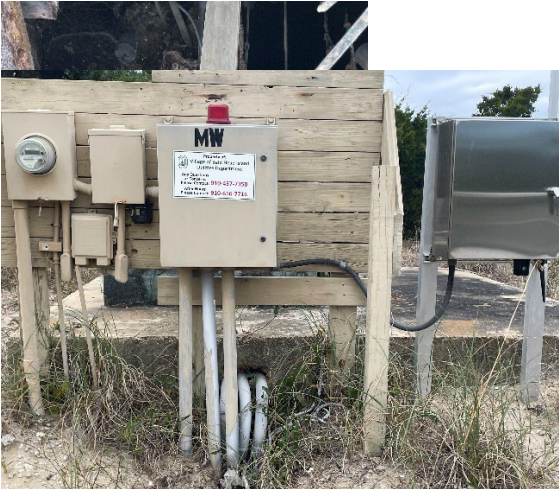
The following pictures were taken on 12.5.24

Royal James



Mourning Warbler

Wastewater Collection System Maintenance Phase III
Addendum
Posted 12/9/2024



SBHW

Wastewater Collection System Maintenance Phase III
Addendum
Posted 12/9/2024



Example Pictures of a rebuilt panel-Dune Ridge Main

Wastewater Collection System Maintenance Phase III
Addendum
Posted 12/9/2024



Wastewater Collection System Maintenance Phase III
Addendum
Posted 12/9/2024

