

# Forest Vegetation Assessment

**Bald Head Woods** is a protected maritime evergreen forest – south Atlantic subtype. It has a **G2 rank** – meaning it is a **globally imperiled community** (*at high risk of extinction or elimination due to restricted range, few populations or occurrences, steep declines, very severe threats, or other factors*).



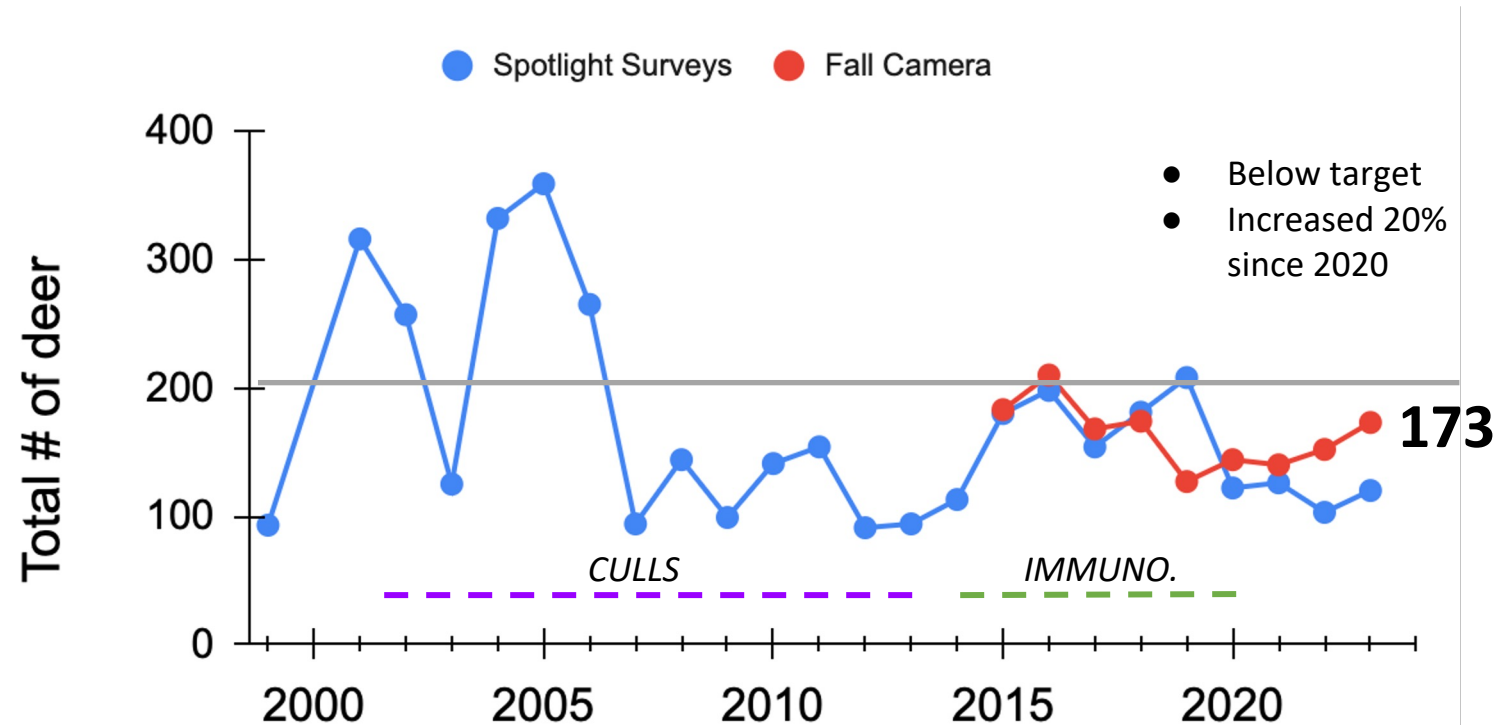
- Paired fenced & unfenced plots to evaluate deer herbivory
- Taggart & Long 2011 - no effect
- New baseline: Forrester 2020
- Evaluate other threats: development, storms, fragmentation, disease
- Major change: Loss of red bay
- **Maintain plots, evaluate 5 yrs**
- **Possible plant assessment in 2025-26**



**Collaborator: Dr. Jodi Forrester, NC State University College of Natural Resources**

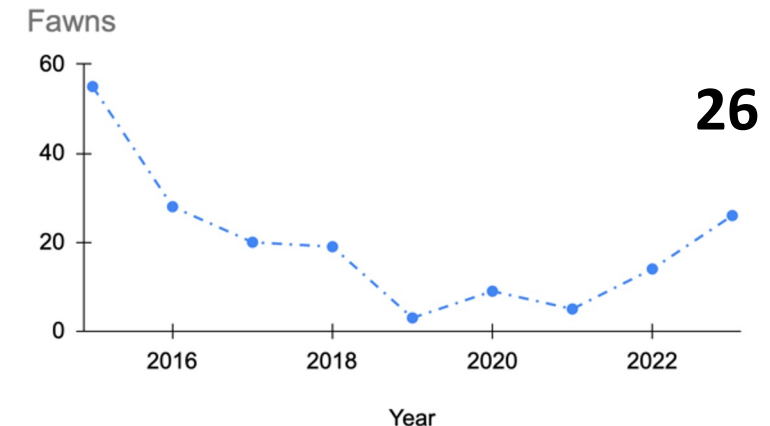


# Deer Population Management

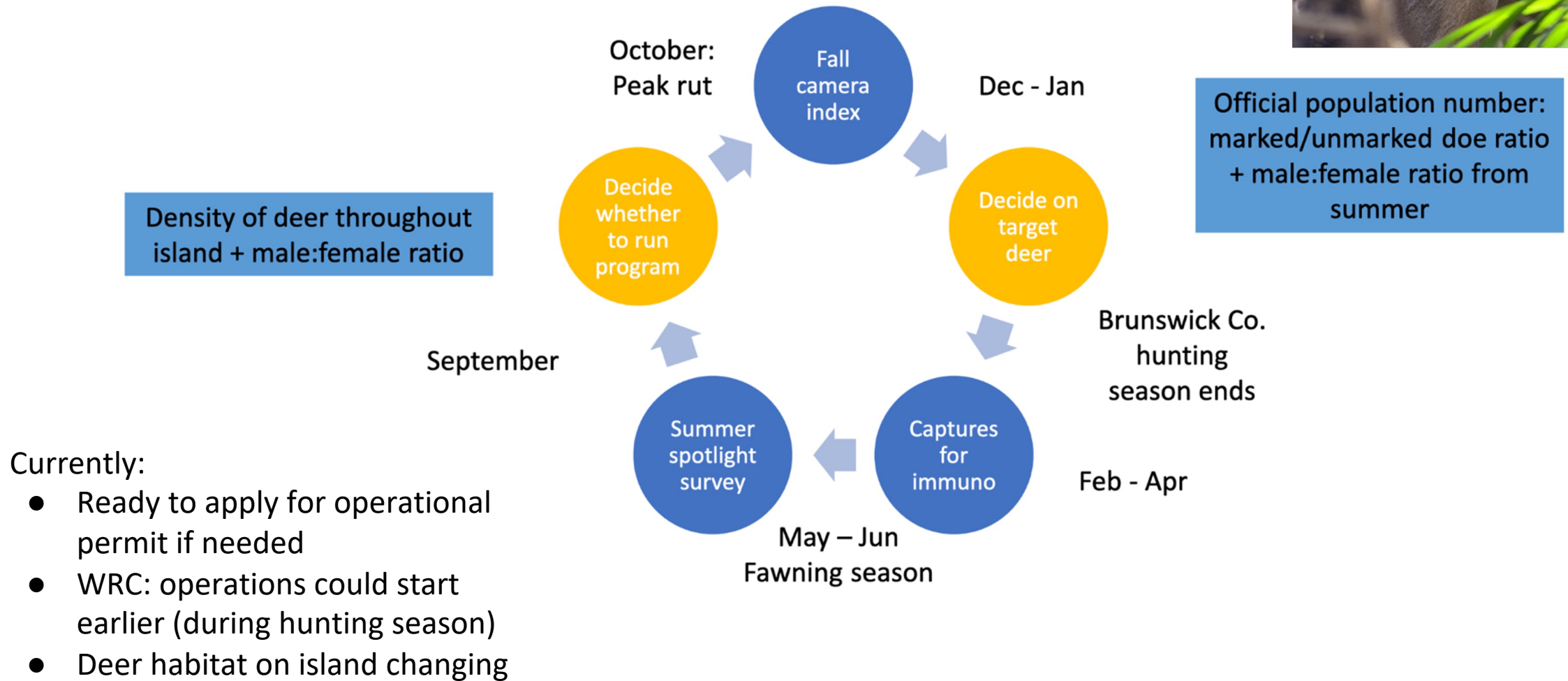


- Evaluate white-tailed deer population size
- Summer spotlight surveys, fall camera surveys
- Assess need for population management
- 2014 - 2020: Immunocontraception using GonaCon

Recommend continuing with current survey methods



# Deer Immunocontraception



**Recommend recalculating available deer habitat & reconsidering target population number**