

APPENDIX C:

Aerial Photography (October 2024)

This appendix contains aerial photography of the Baldhead Island shoreline taken on October 12, 2024 by Greenman-Pedersen, Inc. (GPI)¹ An index sheet is provided as **Figure C-1** and the aerial photography is presented as **Figures C-2** through **C-13**. Also depicted in the figures are the monitoring baseline and profile azimuths summarized in **Table 2.1**.

¹ Greenman-Pederson, Inc.; 3909 Wrightsville Ave. Suite 200; Wilmington, NC 28403.

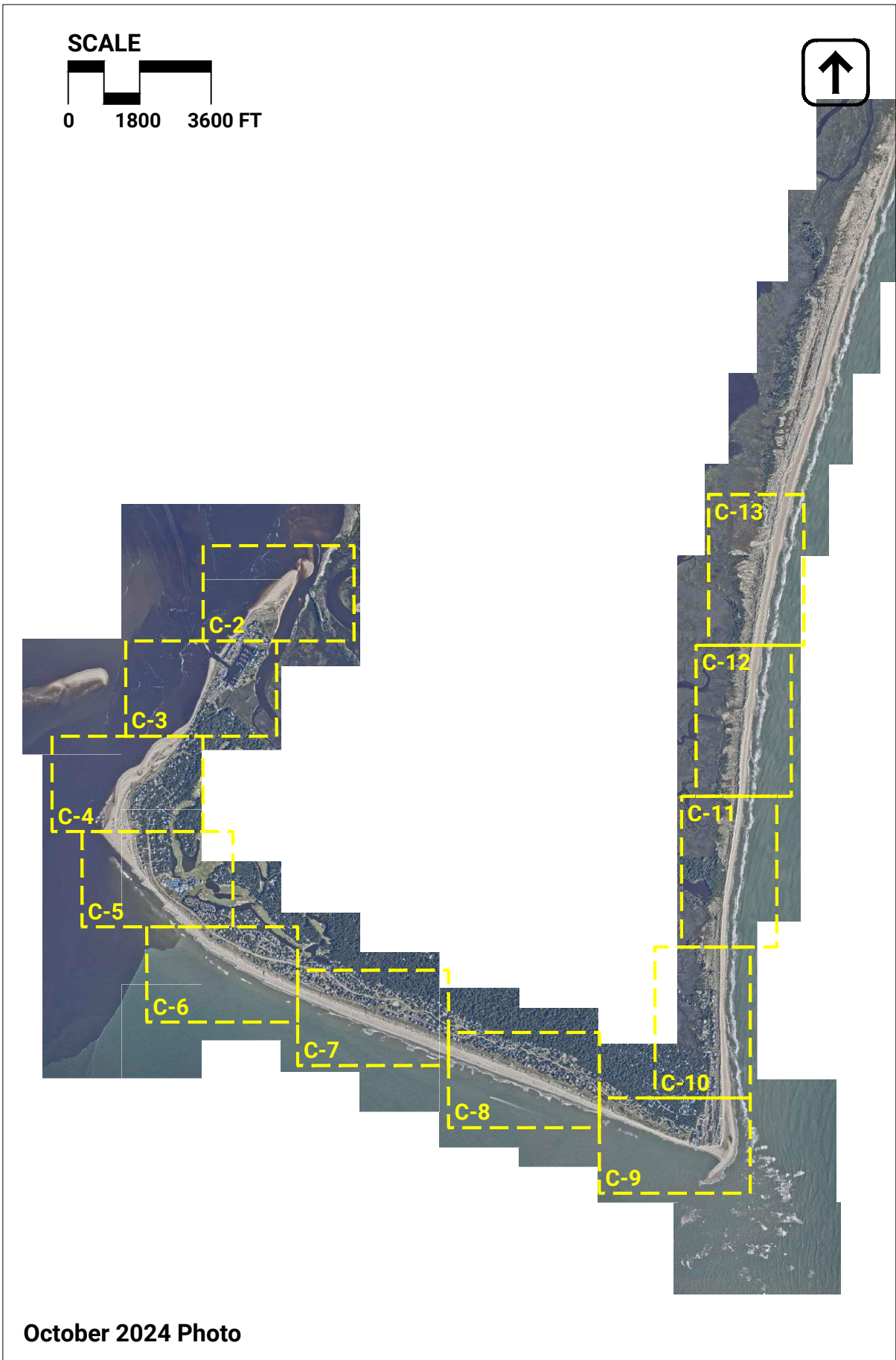


Figure C-1: Bald Head Island October 2024 aerial photography index sheet.



Figure C-2: Bald Head Island October 2024 aerial photography.



Figure C-3: Bald Head Island October 2024 aerial photography.

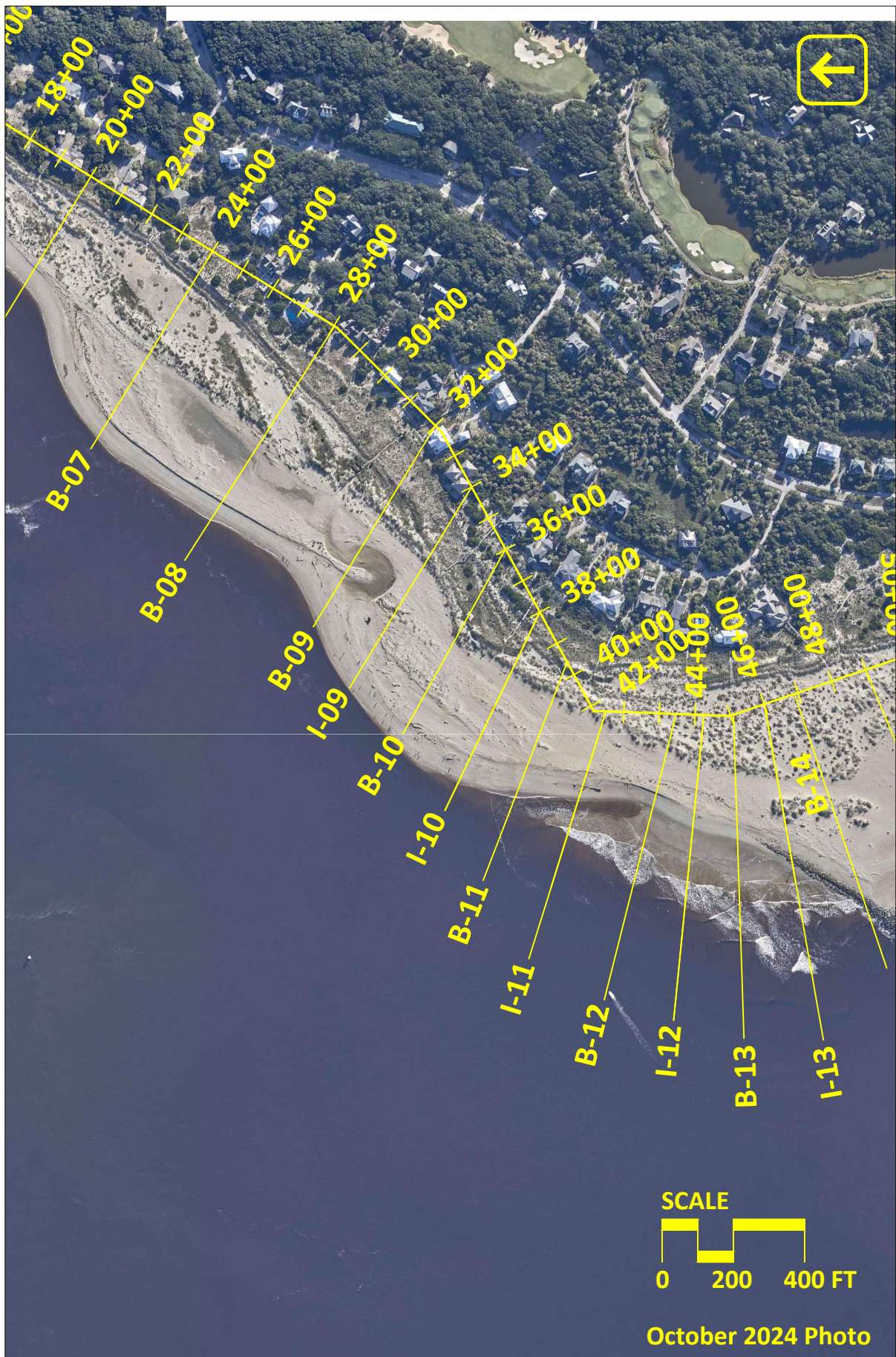


Figure C-4: Bald Head Island October 2024 aerial photography.

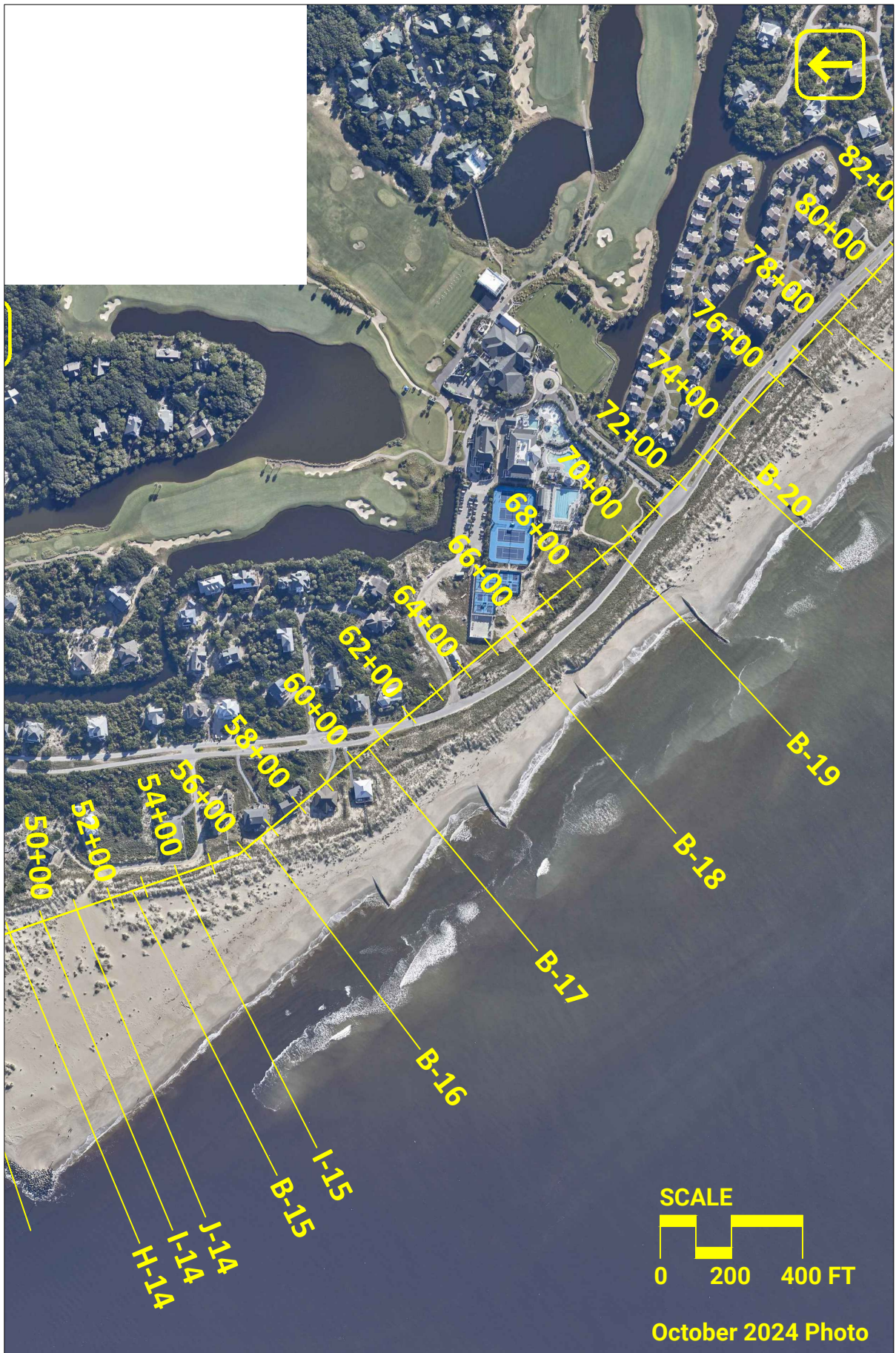


Figure C-5: Bald Head Island October 2024 aerial photography.



Figure C-6: Bald Head Island October 2024 aerial photography.

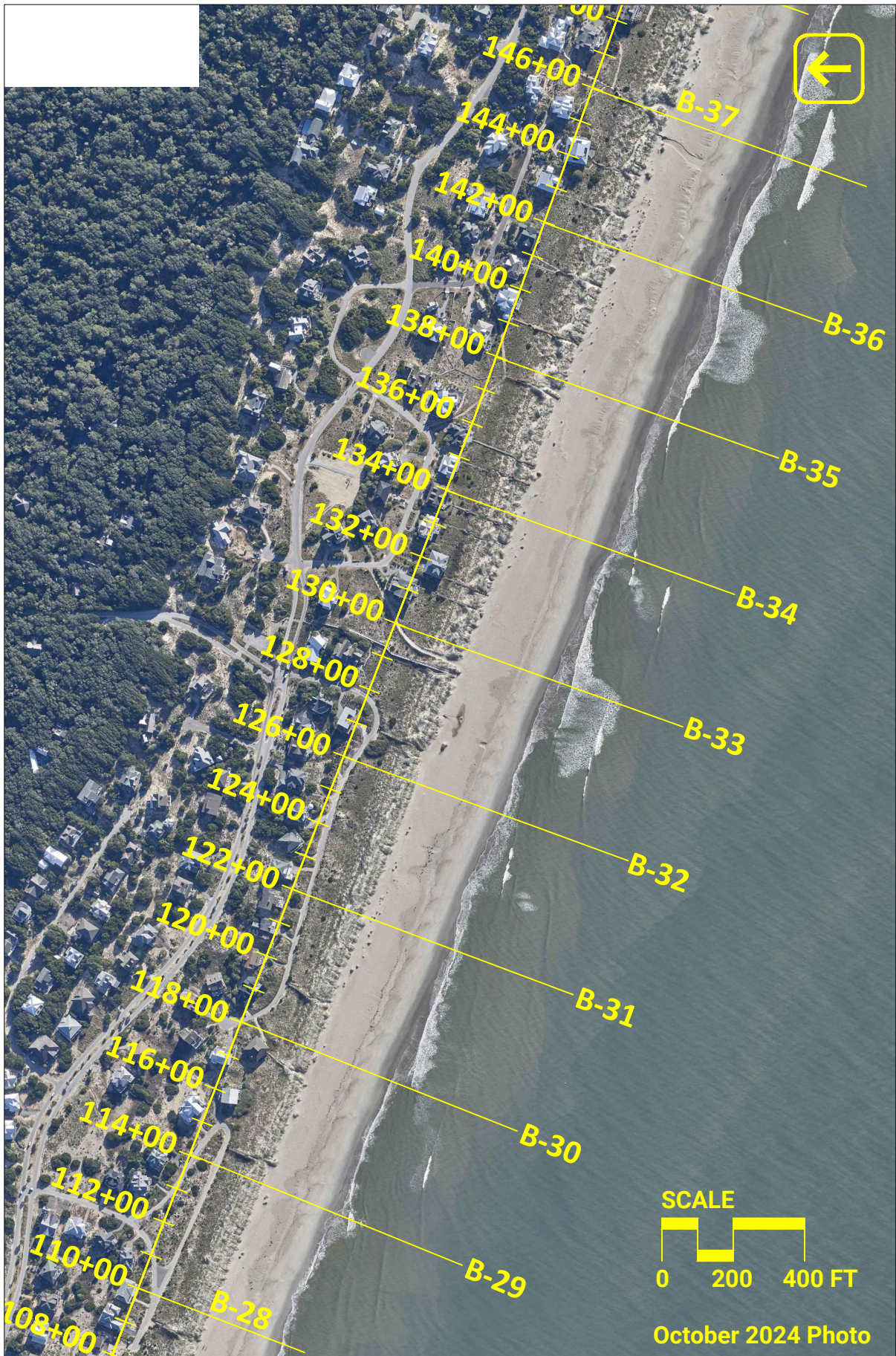


Figure C-7: Bald Head Island October 2024 aerial photography.

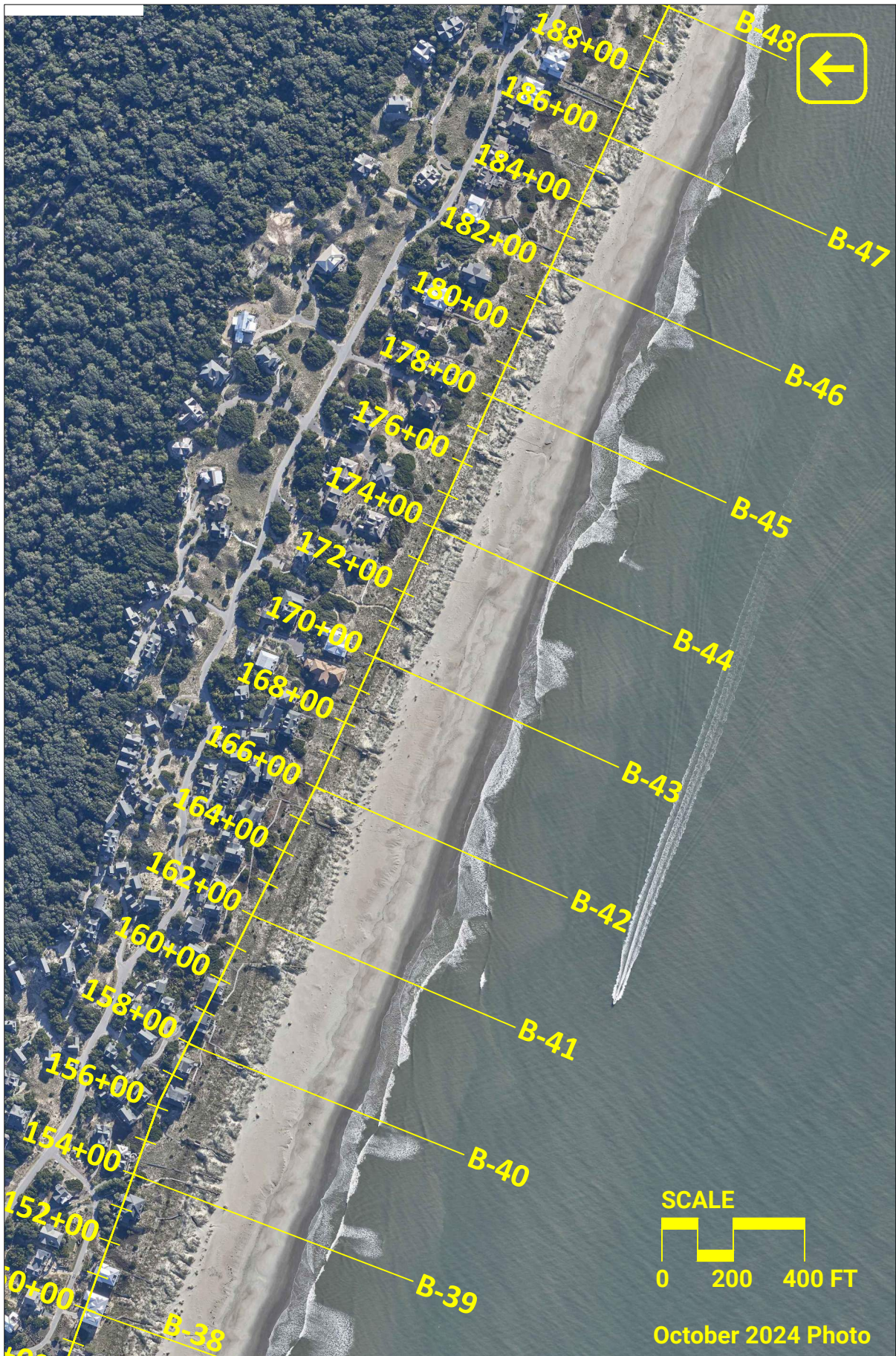


Figure C-8: Bald Head Island October 2024 aerial photography.

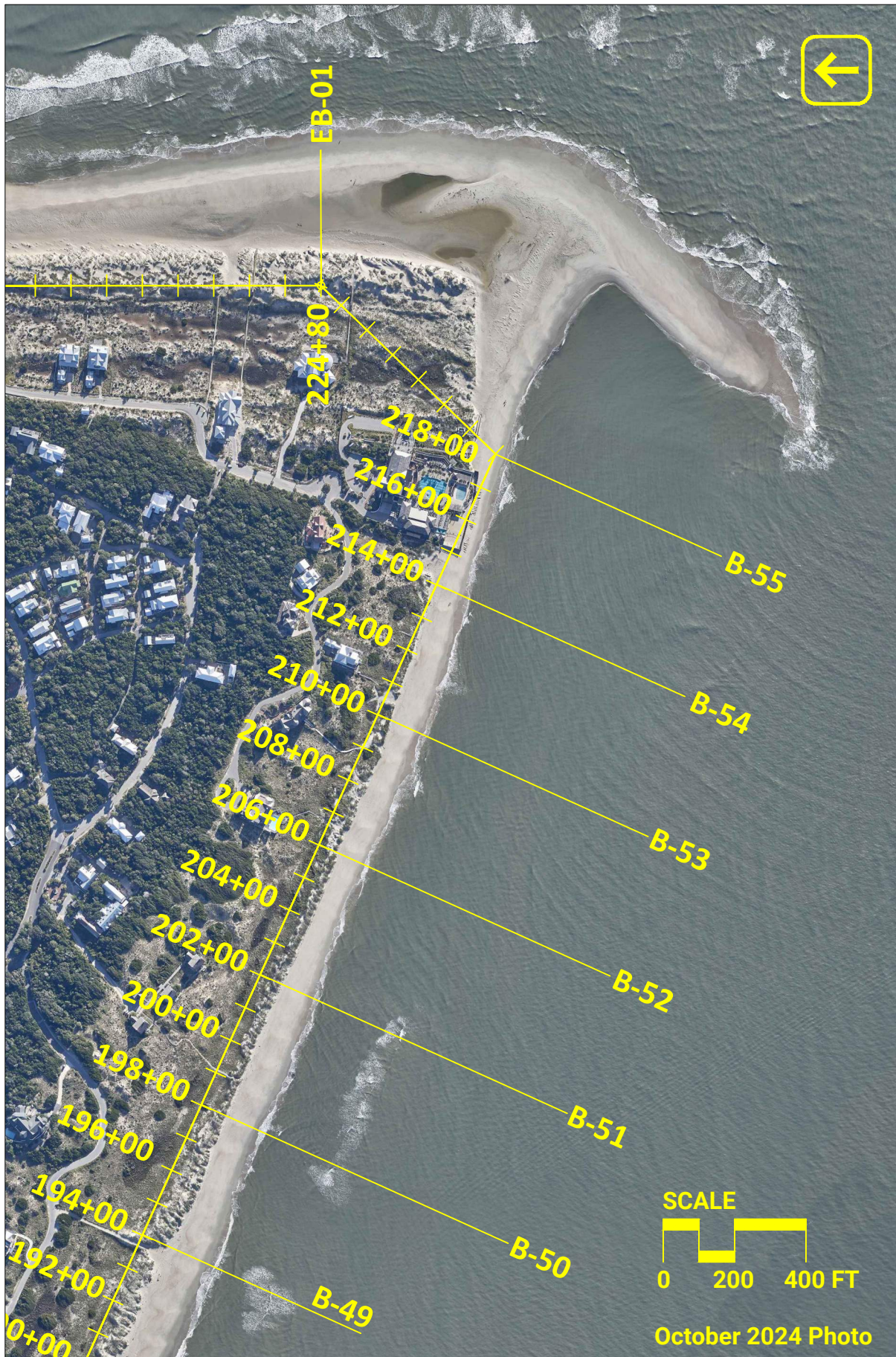


Figure C-9: Bald Head Island October 2024 aerial photography.



Figure C-10: Bald Head Island October 2024 aerial photography.



Figure C-11: Bald Head Island October 2024 aerial photography.



Figure C-12: Bald Head Island October 2024 aerial photography.



Figure C-13: Bald Head Island October 2024 aerial photography.