



M-1 Lot currently being developed

1.43 ac.

2.73 ac.

1.25 ac.

65 ac.

1.13 ac.

1.53 ac.

1.40 ac.

.27 ac.



BC
RO

219

2601B079
2601B078

00522

2600000508

260JB060
260JB061
260JB062

260JB047
260JB046

260JB045
260JB044

260JB043
260JB042

260JB041
260JB040

260JB039
260JB038

260JB037
260JB036

260JB035
260JB034

2601B1301

2601B064
.08 ac.
2600000526

2601B0010T
1-B

2601B002
2

2601B006
6

2601B005
5

2601B009
9

2601B008
8

2601B007
7

LEONARD CT

2601B108

2604J001
111

96

88

84

83

82

80

8-A

6

3

87

88

26000005



2650006221
1.88 ac.

.79 ac.

1.19 ac.
26500062

FEDERAL RD

FEDERAL RD

WASHWOODS WAY

KINNAKET WAY

CHICAMACOMICO WAY

SOUTH EAST BEACH DR

STATION HOUSE WAY

SHOALS WATCH WAY

KINNAKET WAY

WRITERS WAY

SHOALS ALLEY

PORTSMOUTH WAY

AUTHORS ALLEY

SCRIBNERS ALLEY

CAPTAIN CHARLIES TRIL

BALD HEAD WYND

2650006218

2650006215

266000012

266000011

266000010

266000008

266000007

266000006

266000005

266000004

266000003

2654D0002

2654D0017

2654D0016

2654D0015

2654D0014

2654D0013

2654D0012

2654D0011

2654D0010

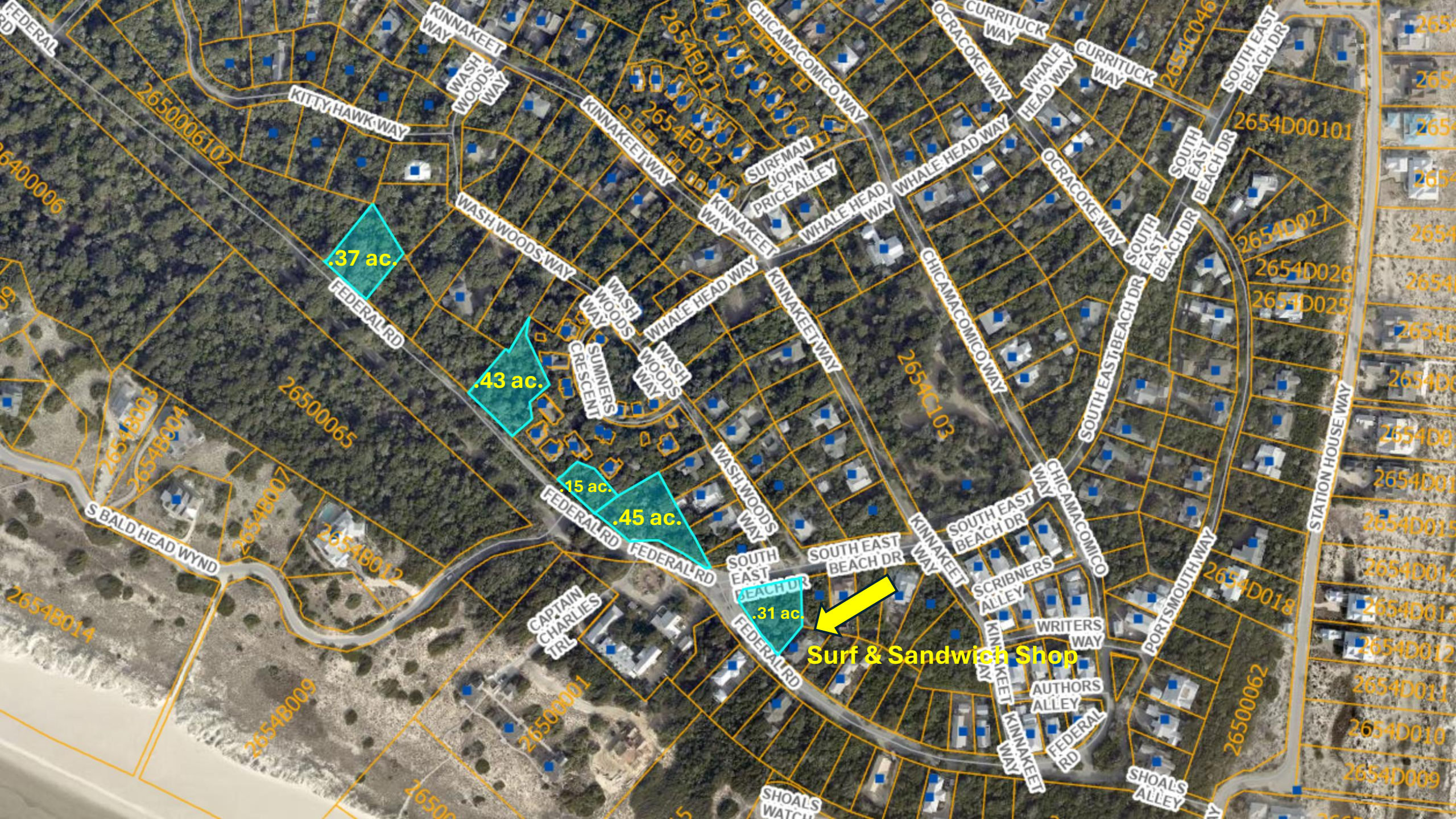
2654D0009

266BA0003

266BA0002

266BA0001

1001



.37 ac.

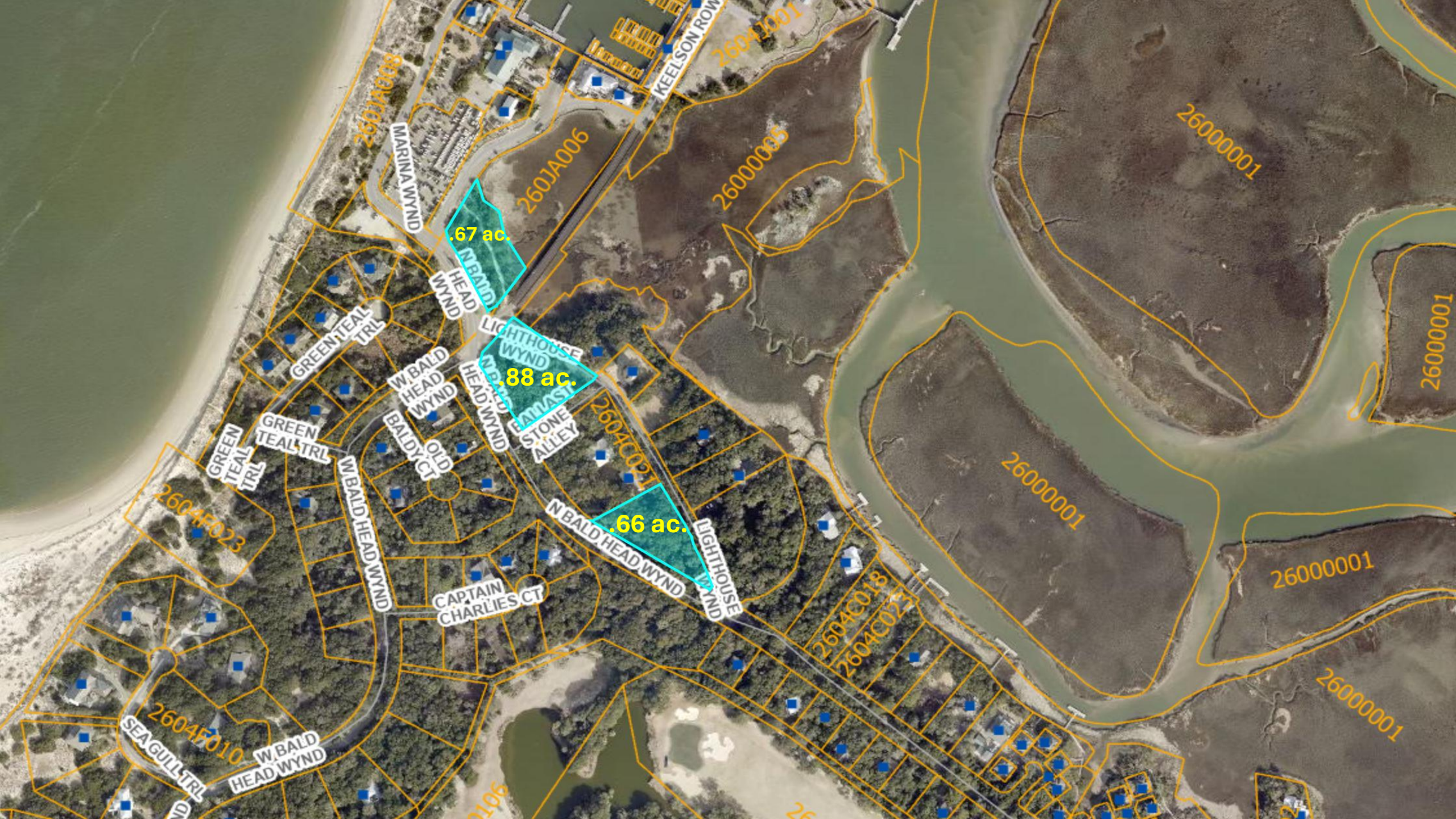
.43 ac.

.15 ac.

.45 ac.

.31 ac.

Surf & Sandwich Shop



.67 ac.

88 ac.

.66 ac.

MARINA WYND

KEELSON ROW

260JA006

26000005

26000001

N BALD
HEAD
WYND

LIGHTHOUSE
WYND

GREEN
TEAL
TRL

W BALD
HEAD
WYND

N BALD
HEAD
WYND

EAST COAST
STONE
ALLEY

2604C021

GREEN
TEAL
TRL

GREEN
TEAL
TRL

W BALD
HEAD
WYND

BALDY
CT

OLD

N BALD
HEAD
WYND

2604C018

2604C023

LIGHTHOUSE
WYND

26000001

26000001

26000001

26000002

2604F023

2604F010

W BALD
HEAD
WYND

SEAGULL
TRL

50105

26

26

26

Coming soon from Whitney Blair

The future home of
Bald Head Island Surf Co.
Bald Head Island Bean



Station House Square

Architecture
BMH Architects, PC
Dietsche+Dietsche Architects

Structural Engineering
Woods Engineering, PA

PME Engineering
CBHF Engineers, PLLC

Stormwater Engineering
Bruce Marek PE

Landscape Design
Donna Ray

Food Service Design
Farris Hospitality