

Smith Island Complex Land Preservation Priorities



SMITH ISLAND
LAND TRUST



Why Preservation Matters?

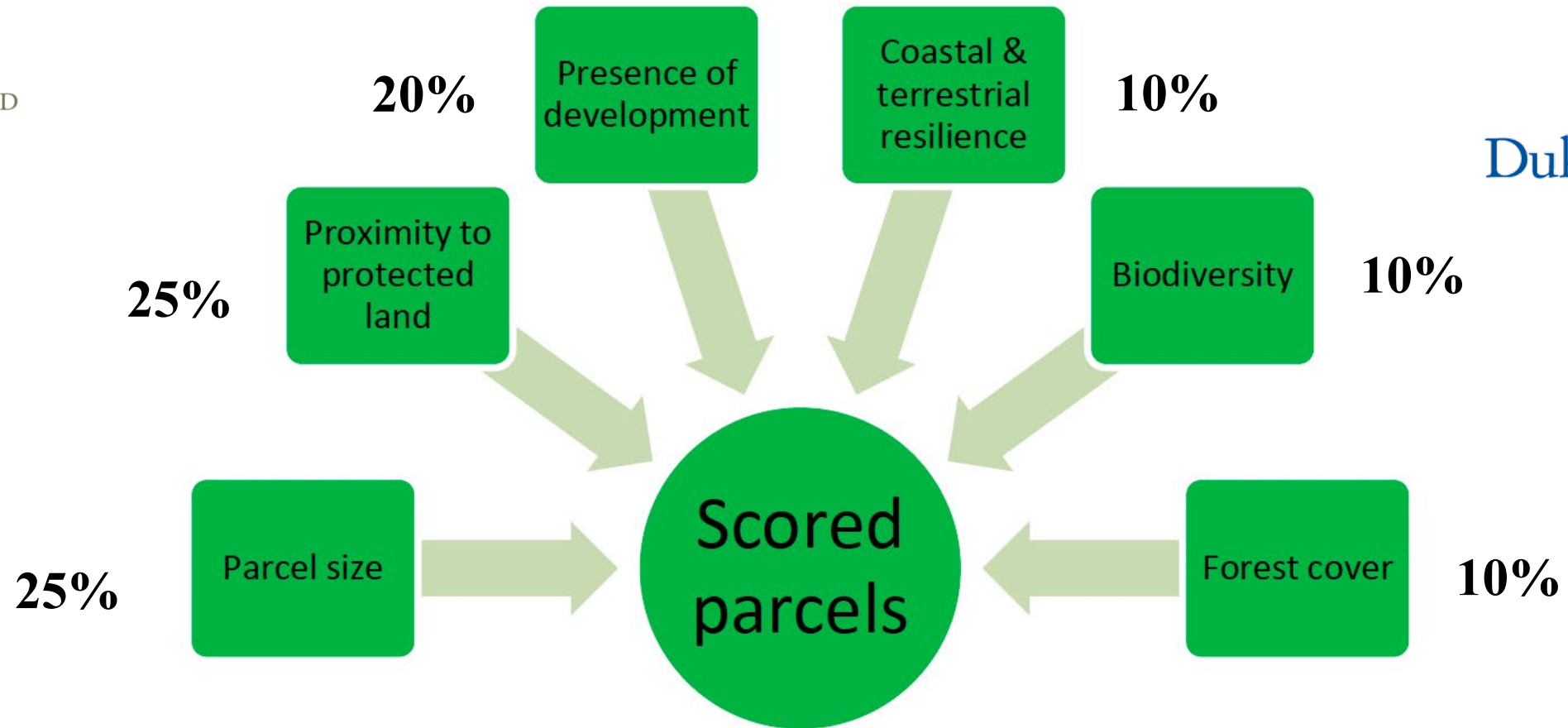
protect overall ecological integrity of system

connected land >> fragmented land

resilience to disturbance (storms)

ecosystem services = water quality & erosion prevention

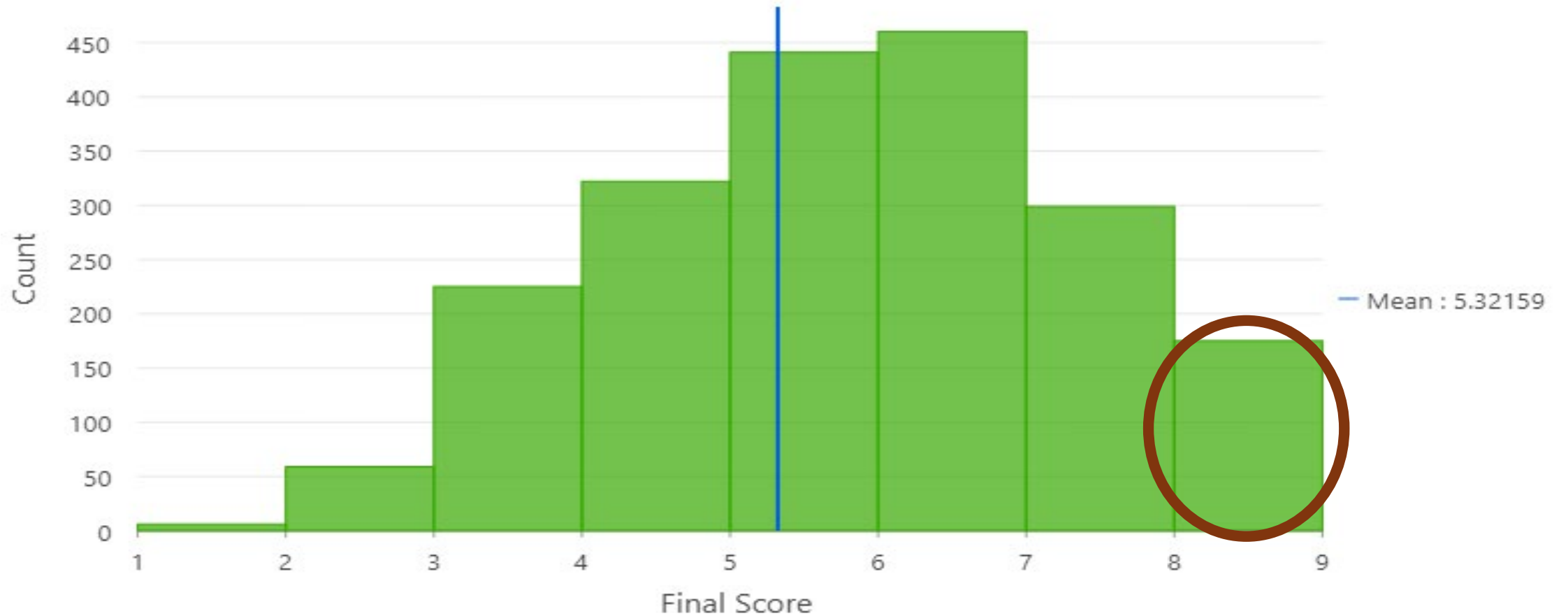
BHI's Priority Preservation Model



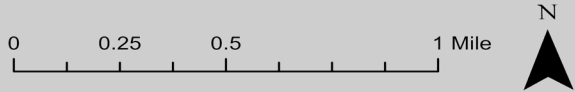
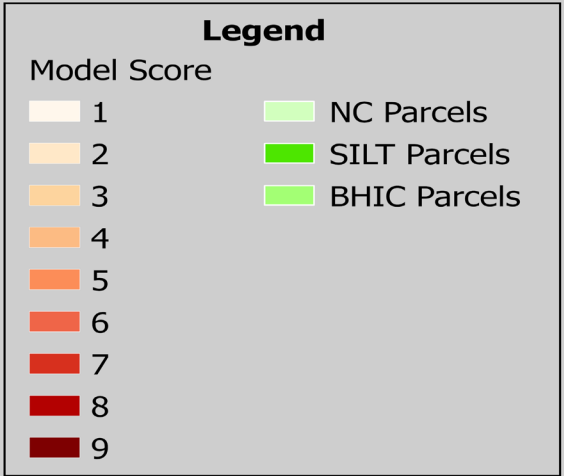
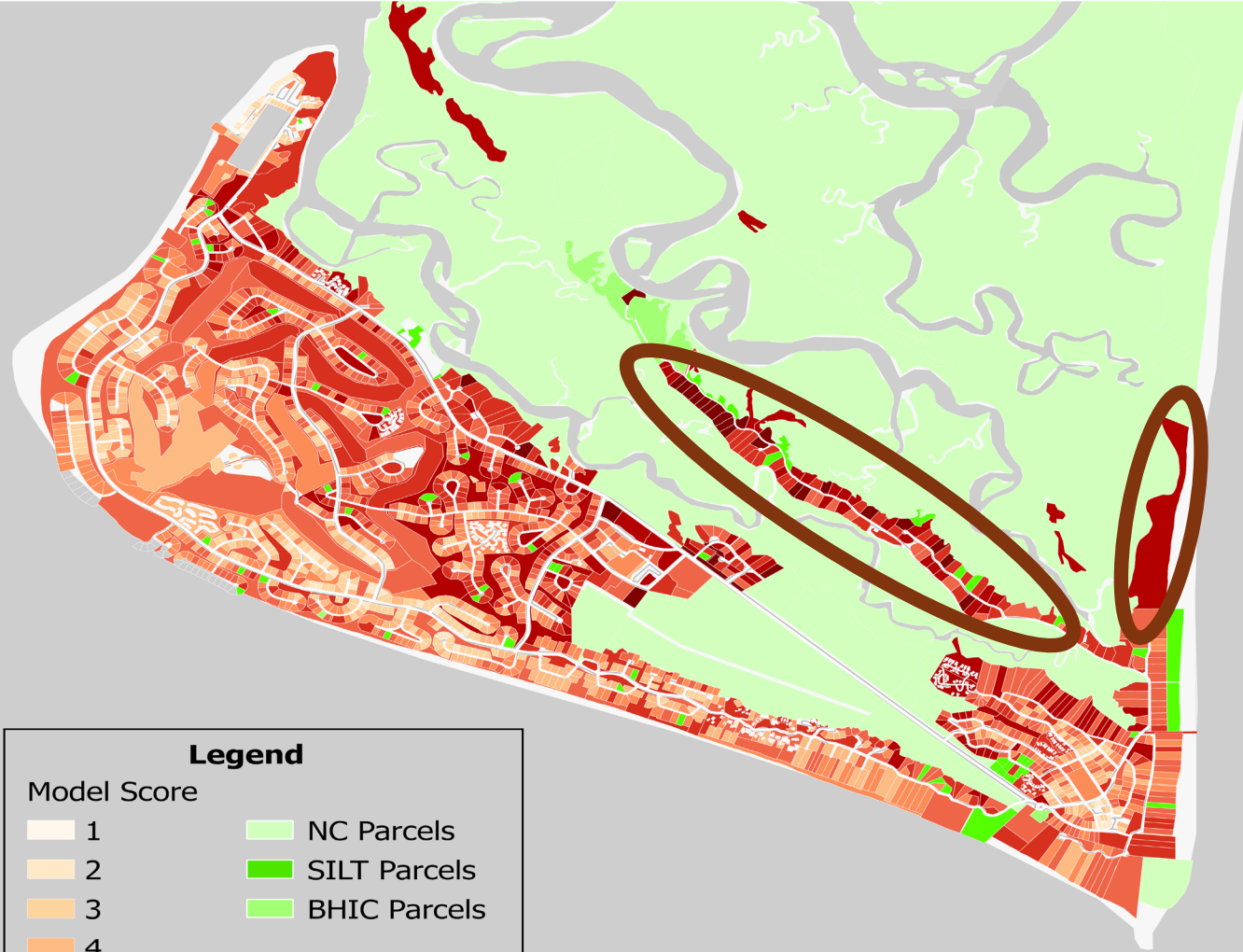
Each aspect scored 1-9 (9 = highest priority)

Summary of Parcel Scores

Distribution of Final Parcel Scores



Guess where?



**Highest scores on
Middle Island
& Bluff Island**

Smith Island Land Trust
Prioritization Model

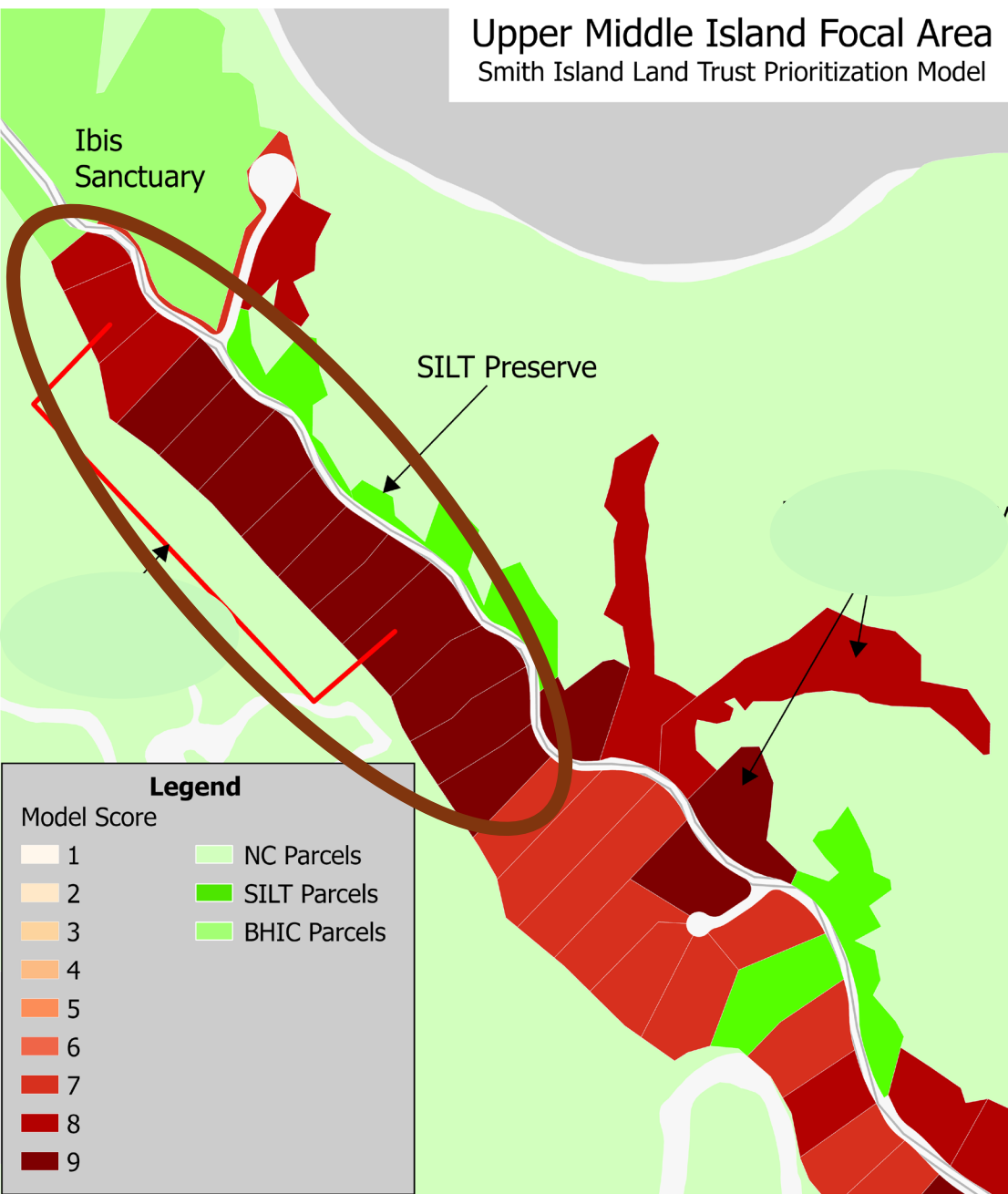


Why Middle Island Preservation Matters

13 high scoring parcels on upper end of Middle Island

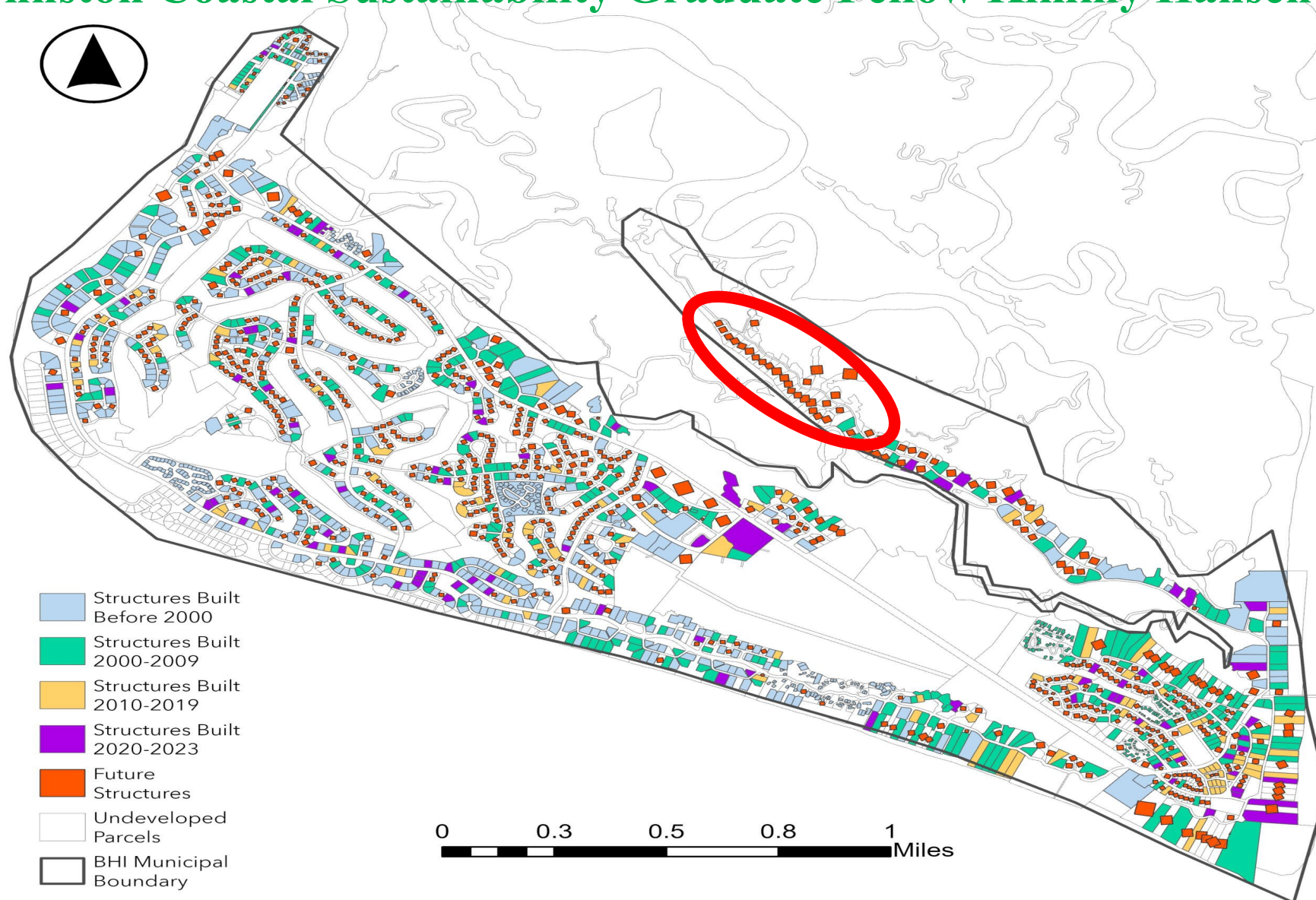
9 properties owned by single owner:

- sizes = 0.5 - 0.9 acres for total of 5.4 acres
- assessed values = \$104,000 - \$169,000 for total of \$1.066 M
- immediately adjacent to BHIC's Ibis Sanctuary
- important wildlife corridor (bald eagle nest nearby?)
- border Bald Head Creek and Cape Creek

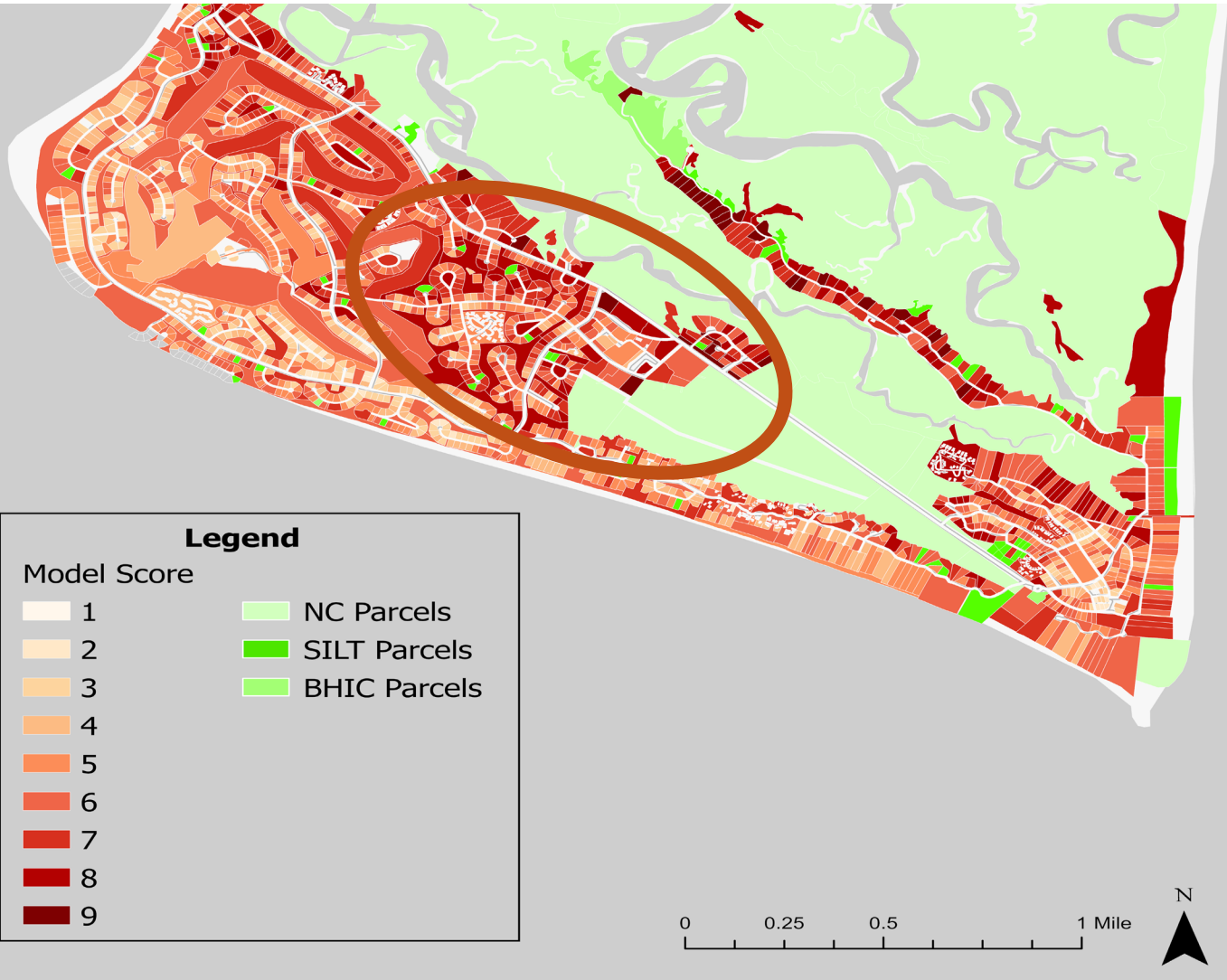


Why Middle Island Preservation Matters

Johnston Coastal Sustainability Graduate Fellow Kimmy Hansen 2024

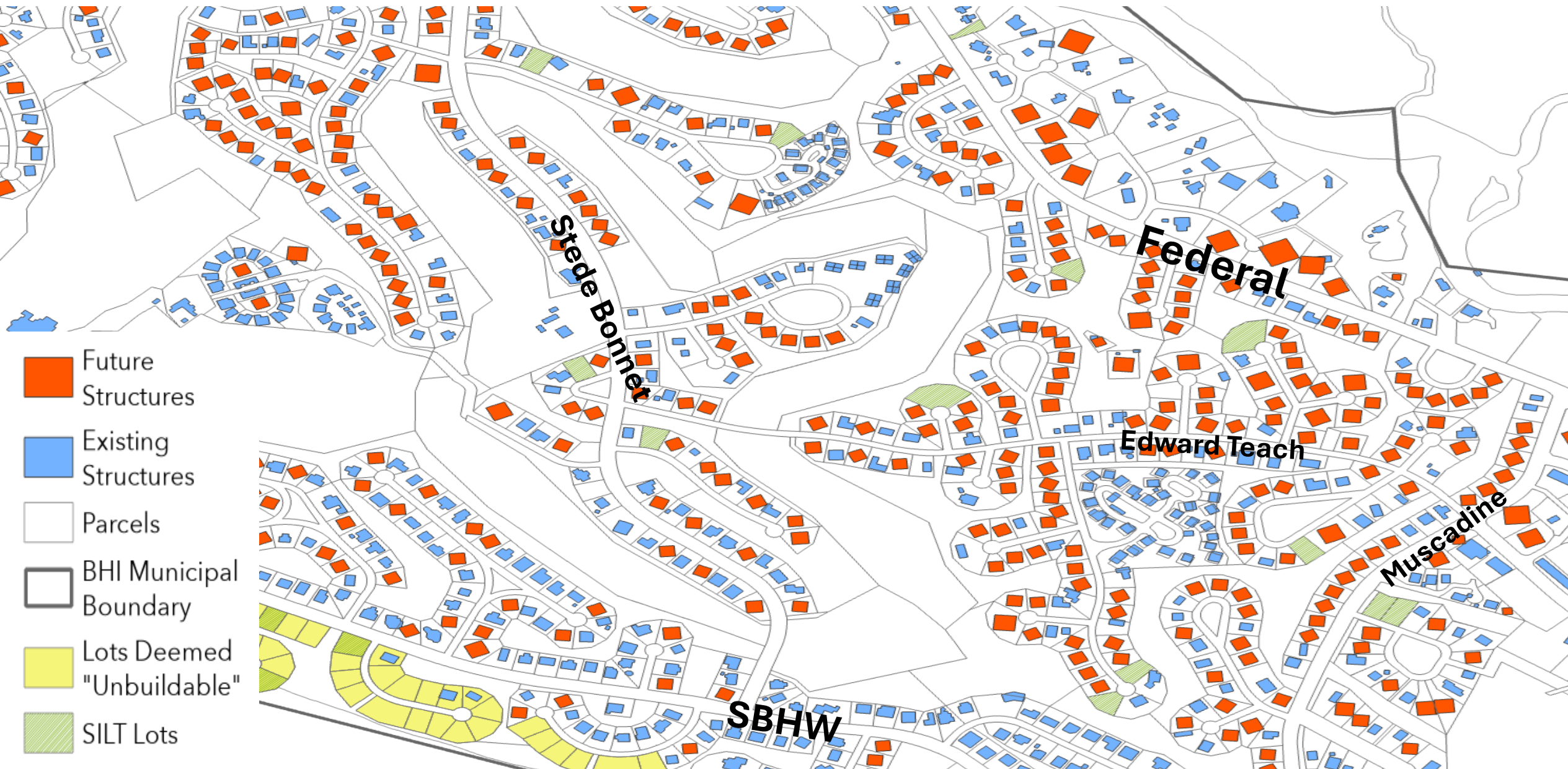


Why Bald Head Island Preservation Matters



Plenty of high scoring parcels on BHI

Why Bald Head Island Preservation Matters



Thanks!



SMITH ISLAND
LAND TRUST

